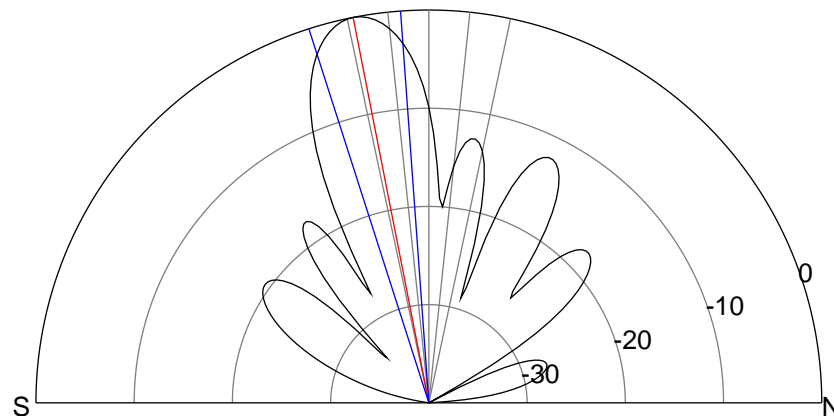
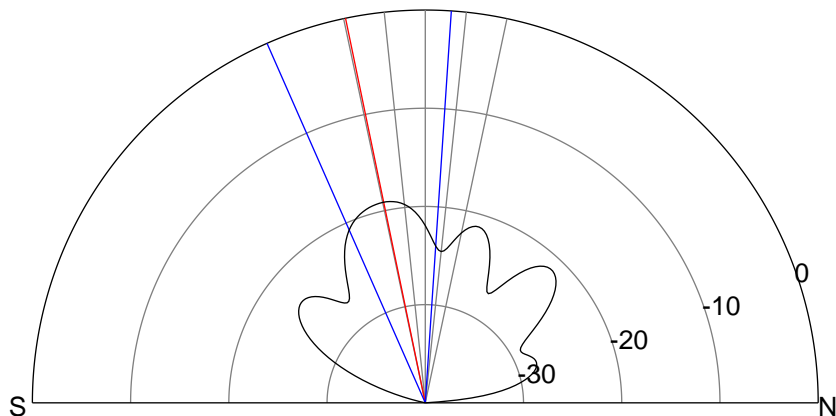
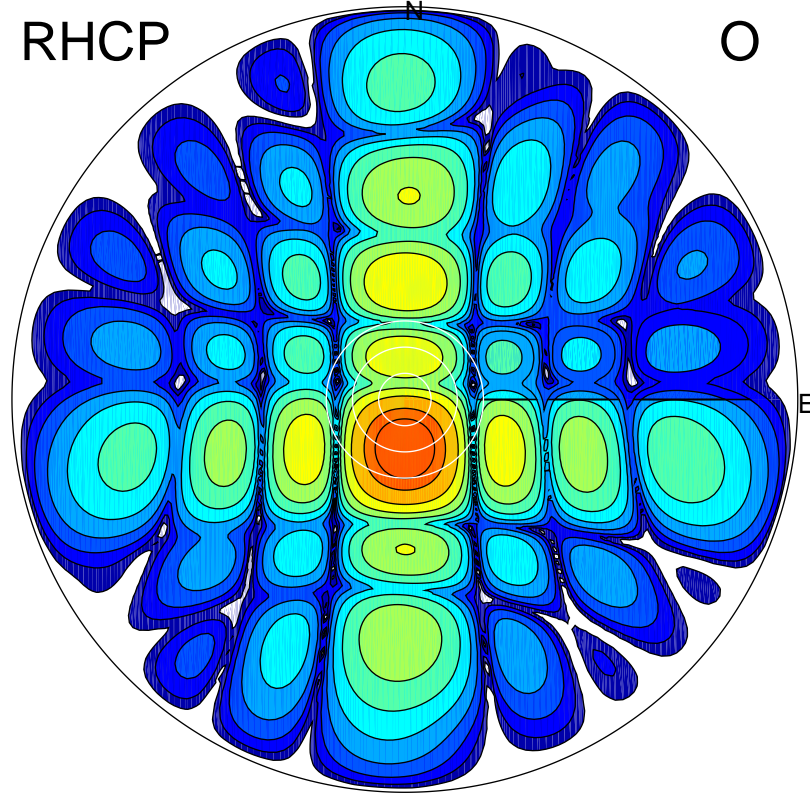
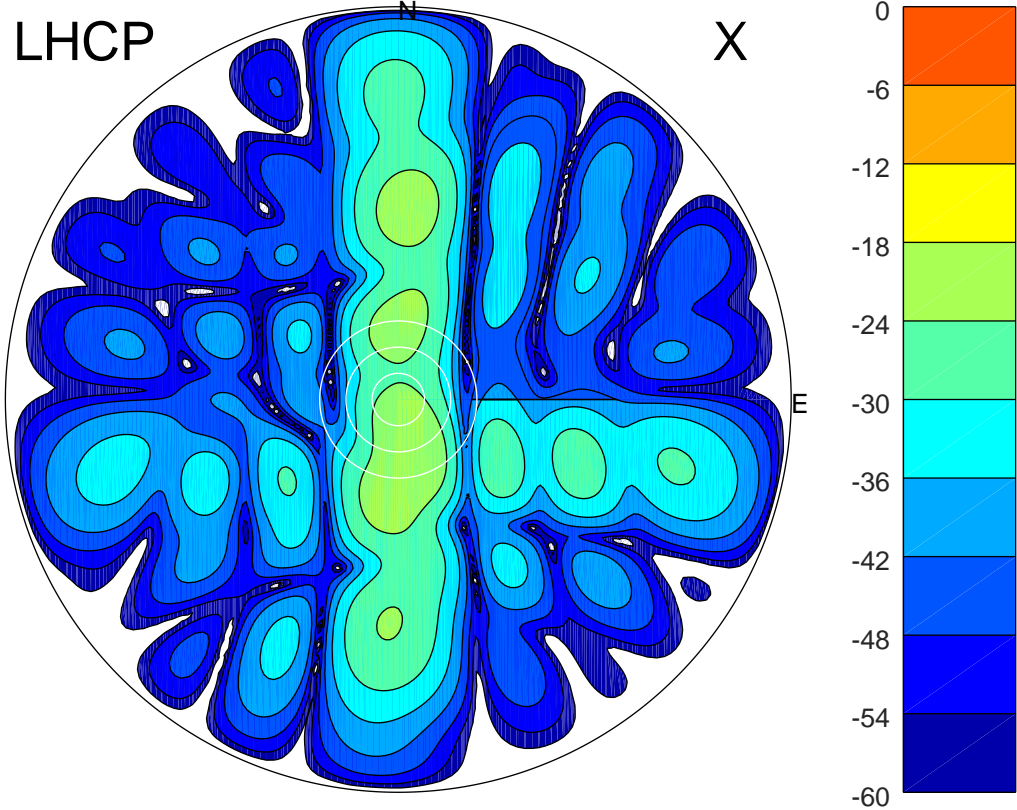


2018-09-21 16:18:41 A2 4.14000000 MHz 821.0 kW



ERP 2.0 MW

Peak gain 3.9 dBi at Az 165 Zen 13
RHCP gain 21.5 dBi
N-S peak 3.2 dBi at Zen -11.7
N-S -3 dB beamwidth 27.6 deg.

ERP 139.1 MW

Peak gain 22.3 dBi at Az 180 Zen 11
LHCP gain 3.1 dBi
N-S peak 22.3 dBi at Zen -11.1
N-S -3 dB beamwidth 13.6 deg.