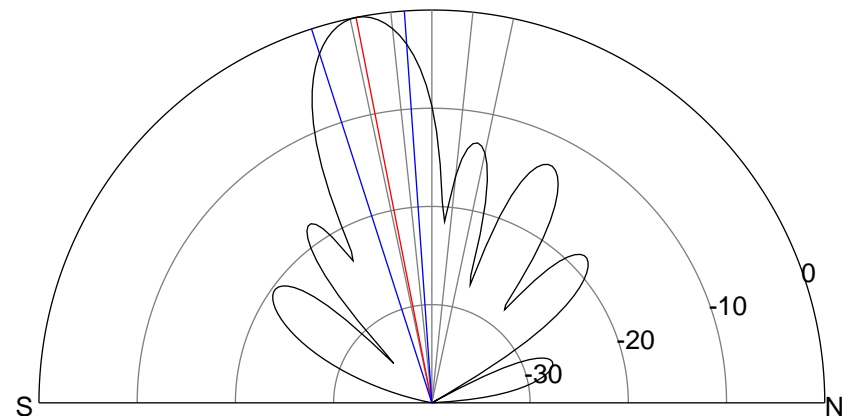
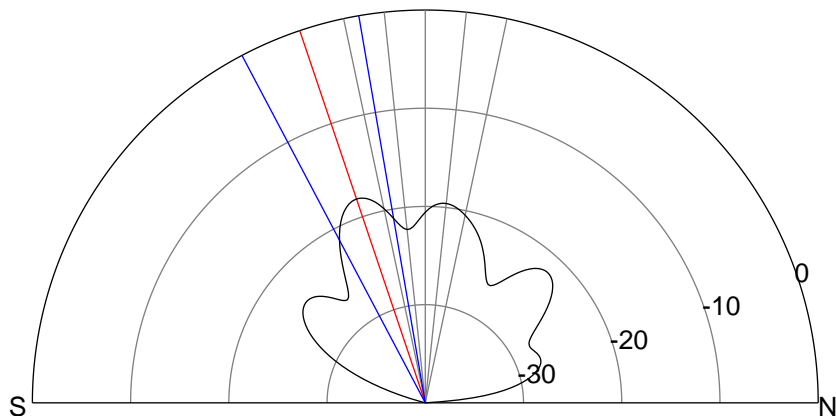
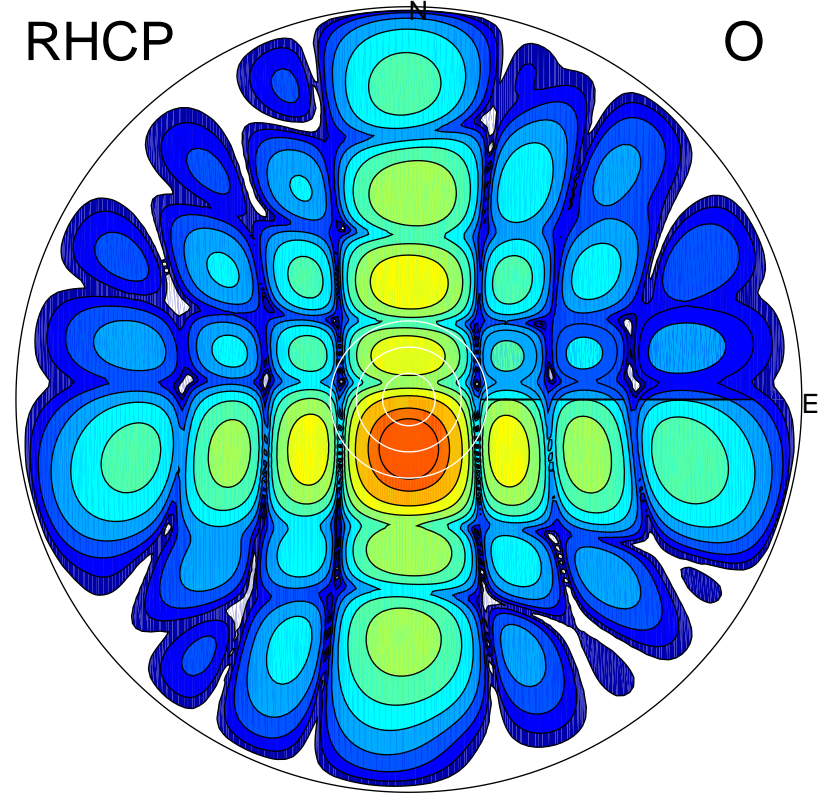
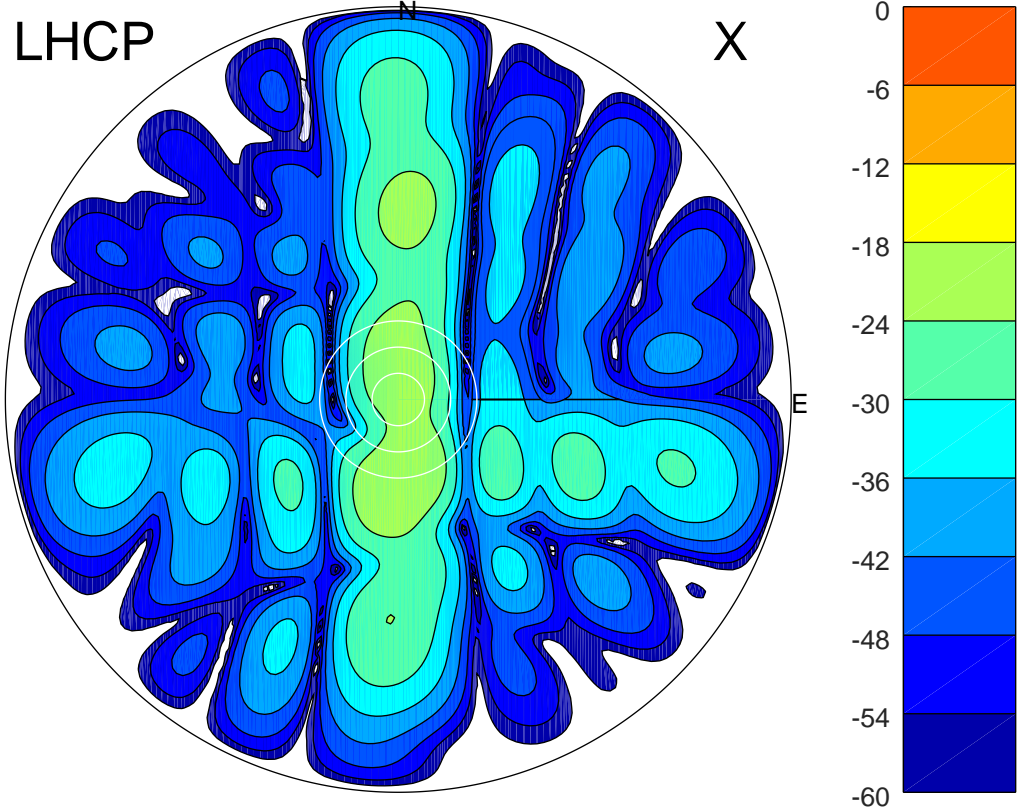


2018-09-21 16:18:26 A2 4.14000000 MHz 477.0 kW



### ERP 1.3 MW

Peak gain 4.3 dBi at Az 175 Zen 18  
RHCP gain 19.4 dBi  
N-S peak 4.2 dBi at Zen -18.6  
N-S -3 dB beamwidth 18.1 deg.

### ERP 80.5 MW

Peak gain 22.3 dBi at Az 181 Zen 11  
LHCP gain 1.9 dBi  
N-S peak 22.3 dBi at Zen -11.1  
N-S -3 dB beamwidth 13.8 deg.