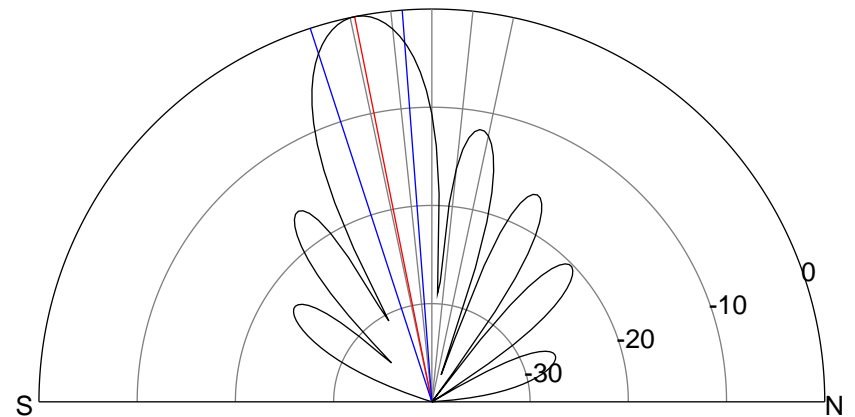
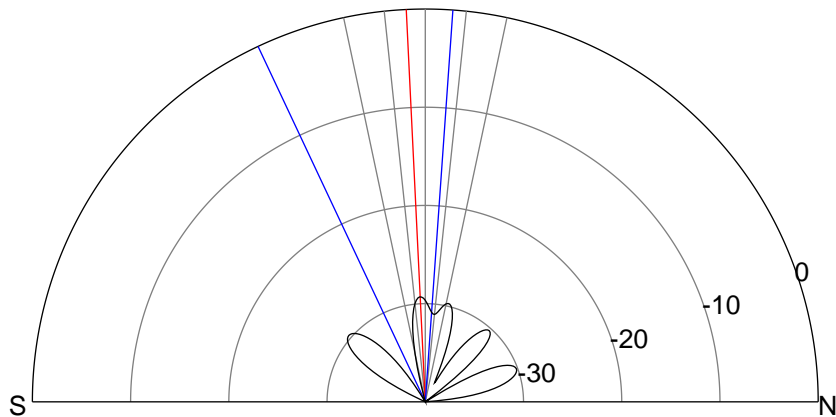
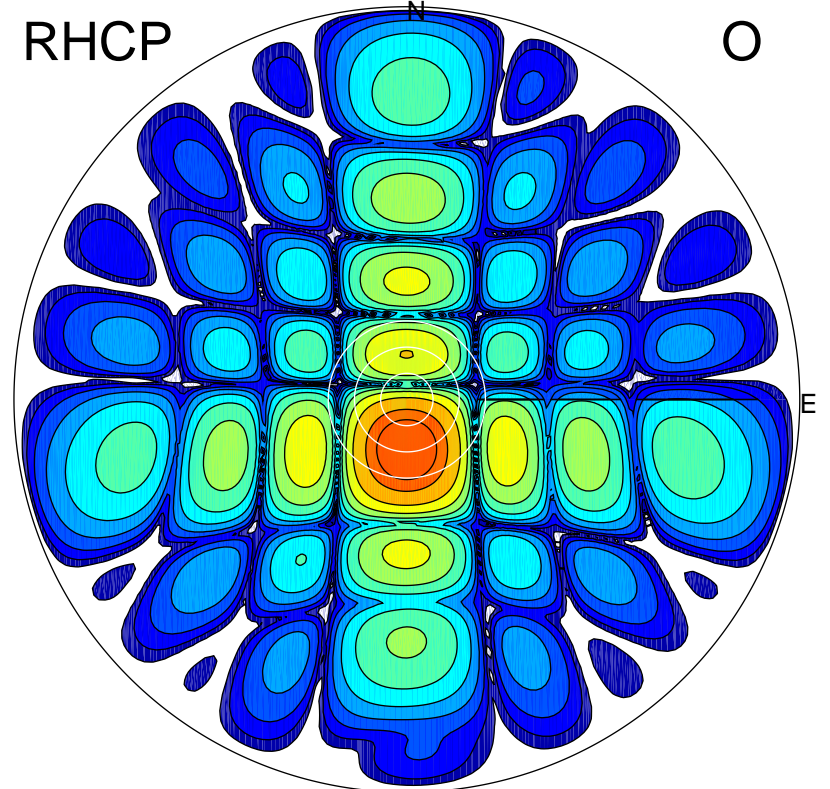
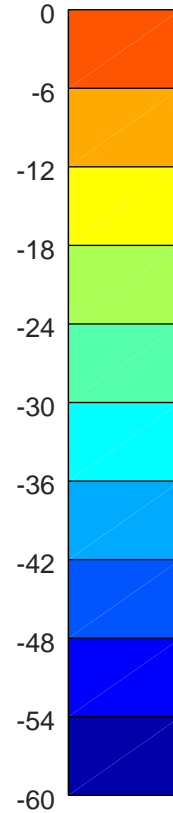
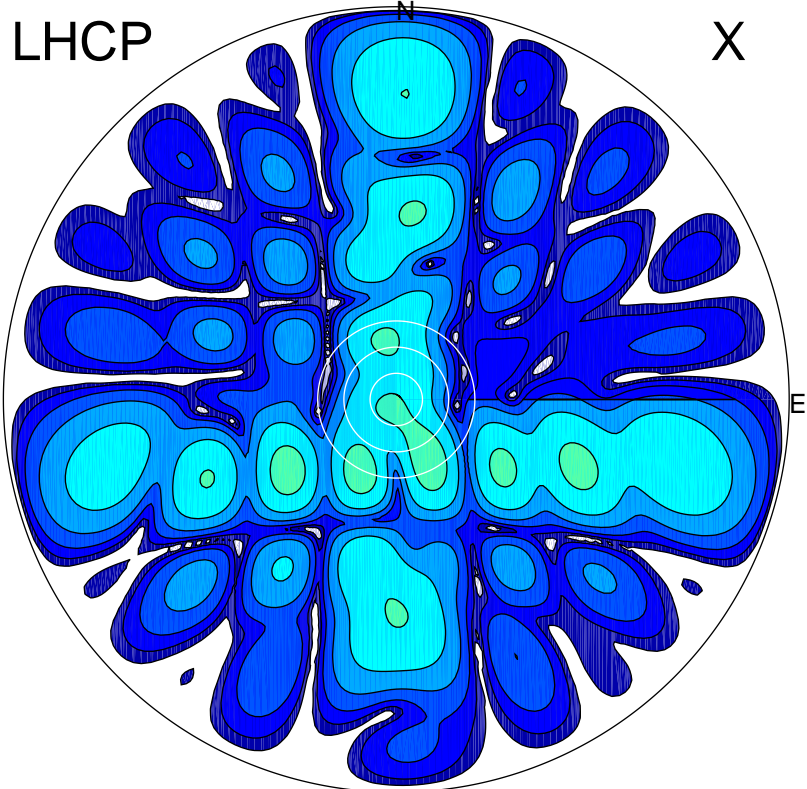


2018-09-21 16:17:41 A2 4.12000000 MHz 886.0 kW



ERP 0.3 MW

Peak gain -4.8 dBi at Az 152 Zen 16
RHCP gain 18.4 dBi
N-S peak -6.7 dBi at Zen -2.8
N-S -3 dB beamwidth 29.2 deg.

ERP 159.4 MW

Peak gain 22.6 dBi at Az 182 Zen 11
LHCP gain -11.7 dBi
N-S peak 22.6 dBi at Zen -11.3
N-S -3 dB beamwidth 13.7 deg.