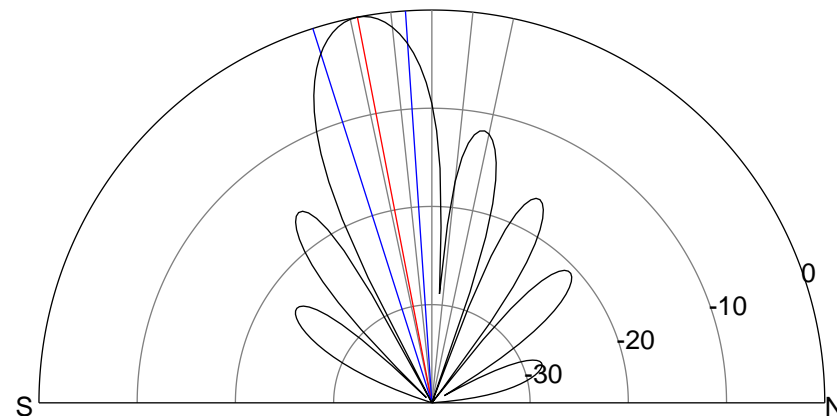
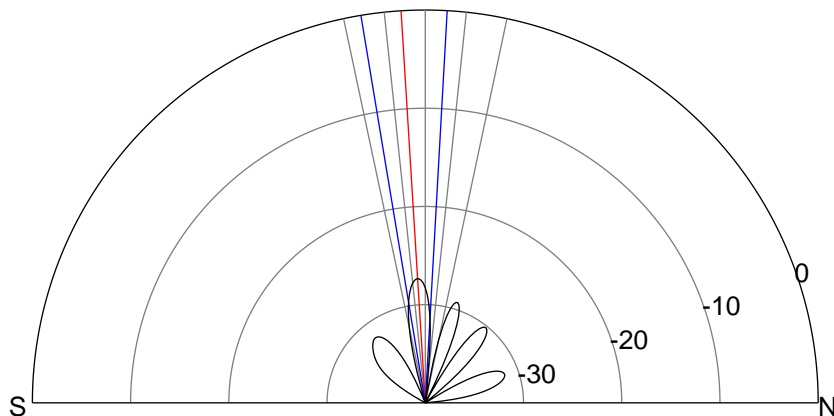
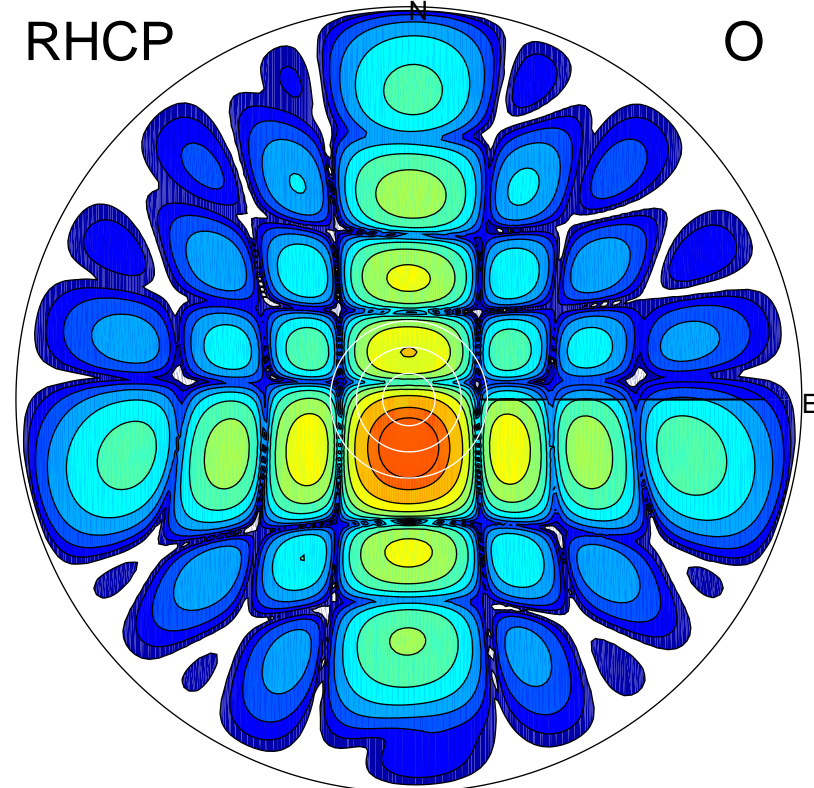
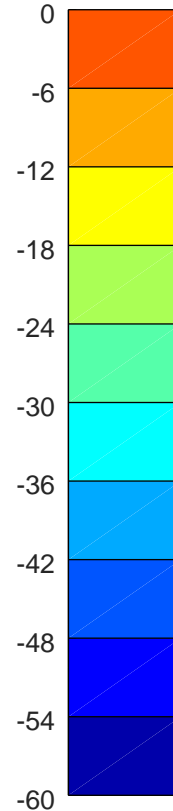
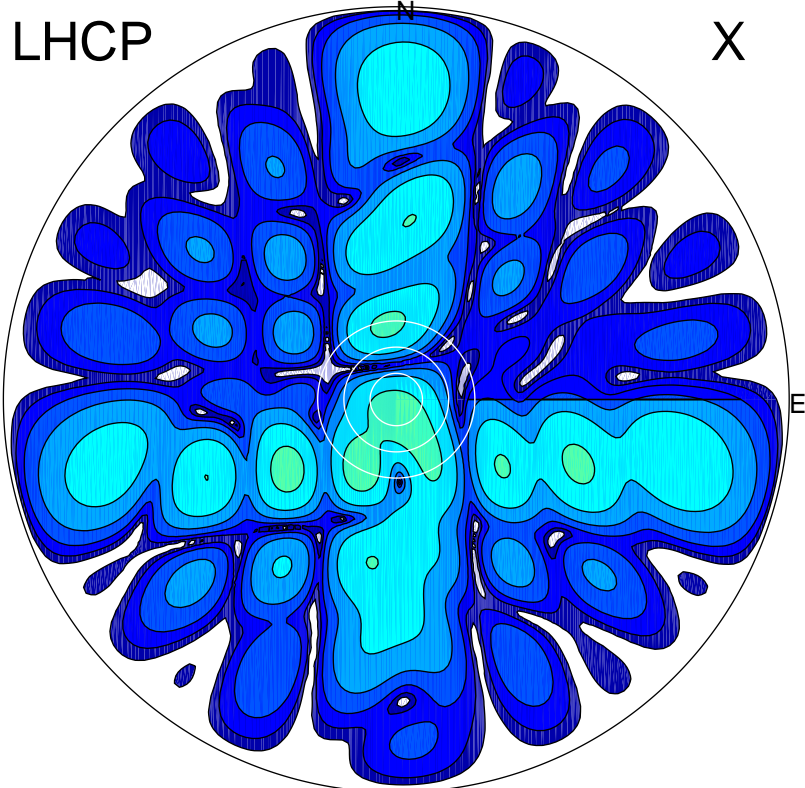


2018-09-21 16:16:41 A2 4.10000000 MHz 880.0 kW



### ERP 0.3 MW

Peak gain -4.7 dBi at Az 208 Zen 17  
RHCP gain 17.5 dBi  
N-S peak -4.8 dBi at Zen -3.5  
N-S -3 dB beamwidth 12.6 deg.

### ERP 157.6 MW

Peak gain 22.5 dBi at Az 181 Zen 11  
LHCP gain -8.5 dBi  
N-S peak 22.5 dBi at Zen -10.9  
N-S -3 dB beamwidth 13.8 deg.