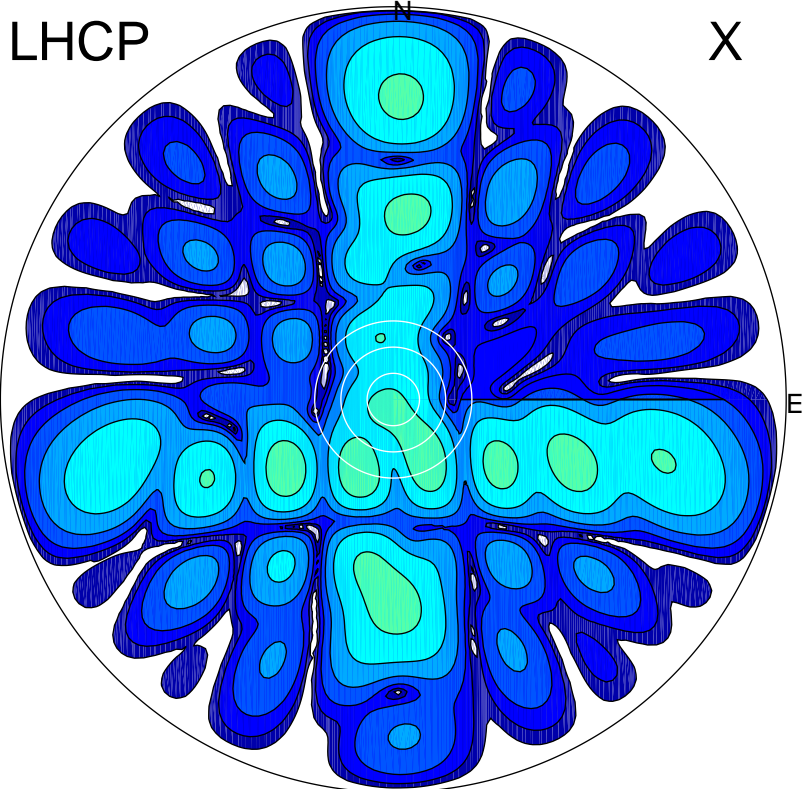
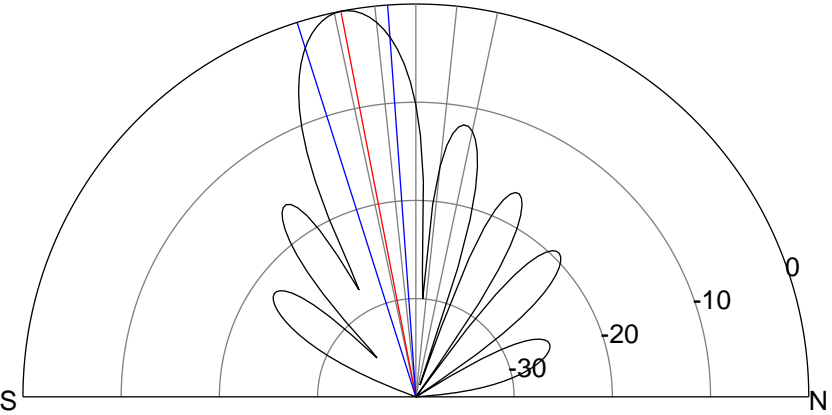
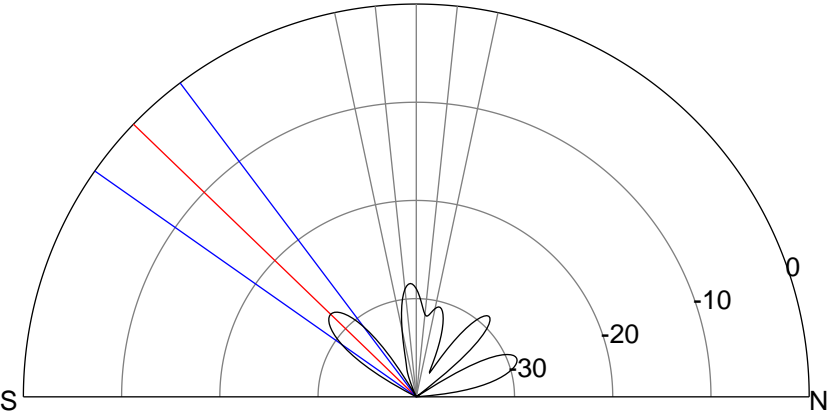
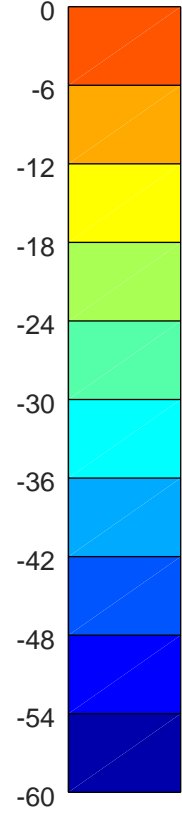
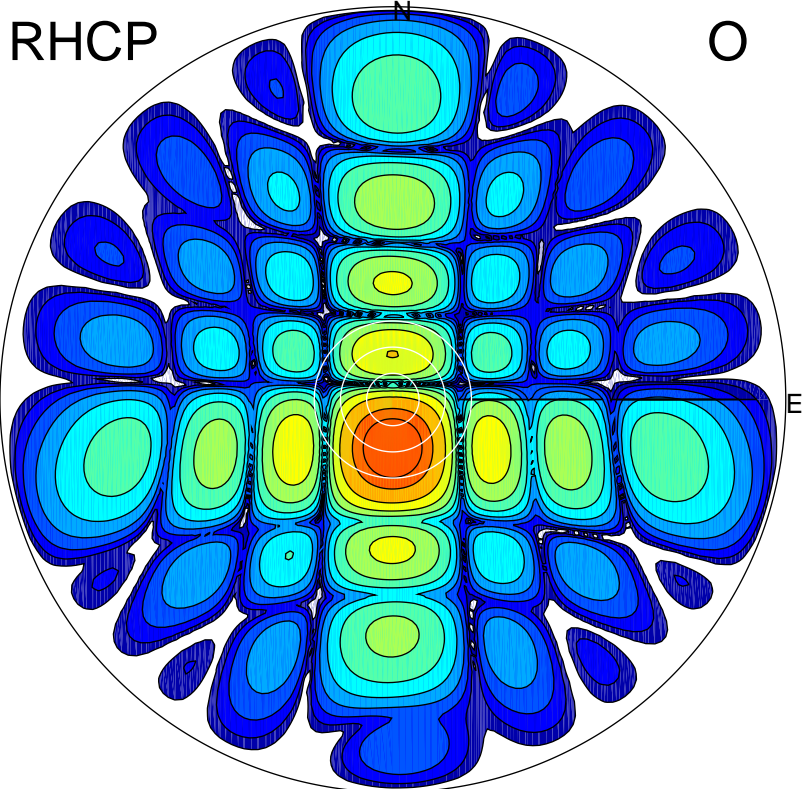


2018-09-21 16:15:41 A2 4.18000000 MHz 892.0 kW

LHCP



RHCP



ERP 0.4 MW

Peak gain -3.7 dBi at Az 206 Zen 18
RHCP gain 17.0 dBi
N-S peak -5.2 dBi at Zen -46.0
N-S -3 dB beamwidth 18.0 deg.

ERP 165.3 MW

Peak gain 22.7 dBi at Az 180 Zen 11
LHCP gain -9.5 dBi
N-S peak 22.7 dBi at Zen -11.0
N-S -3 dB beamwidth 13.5 deg.