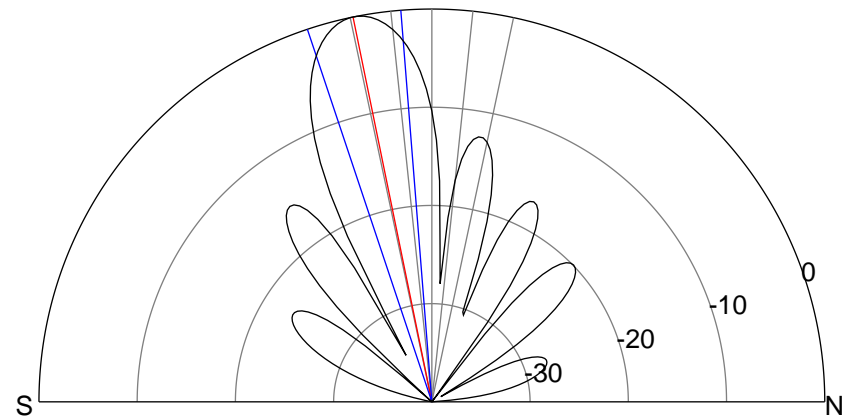
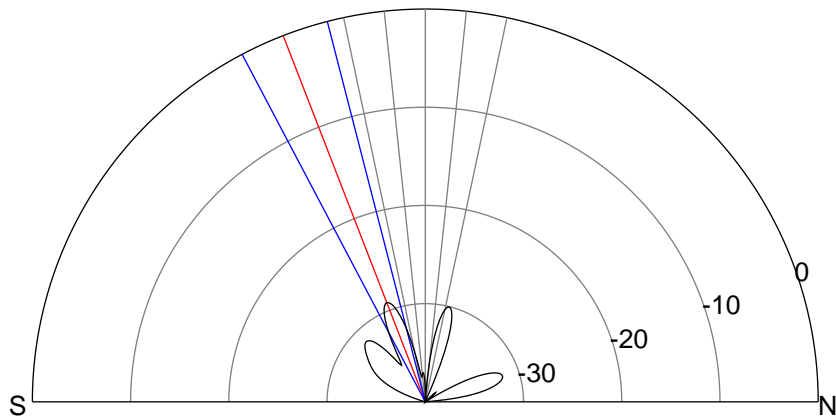
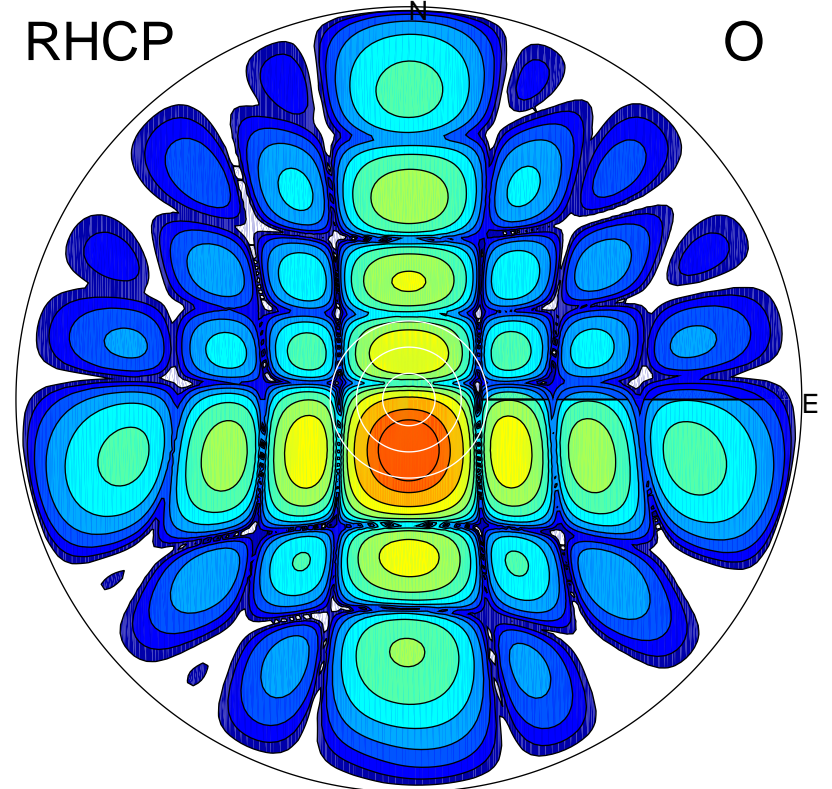
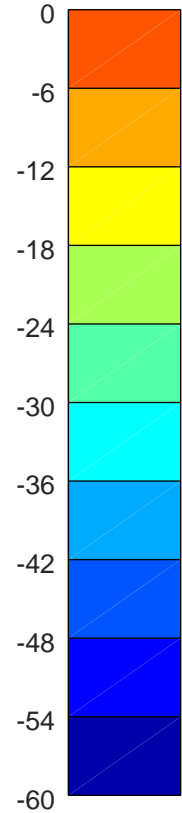
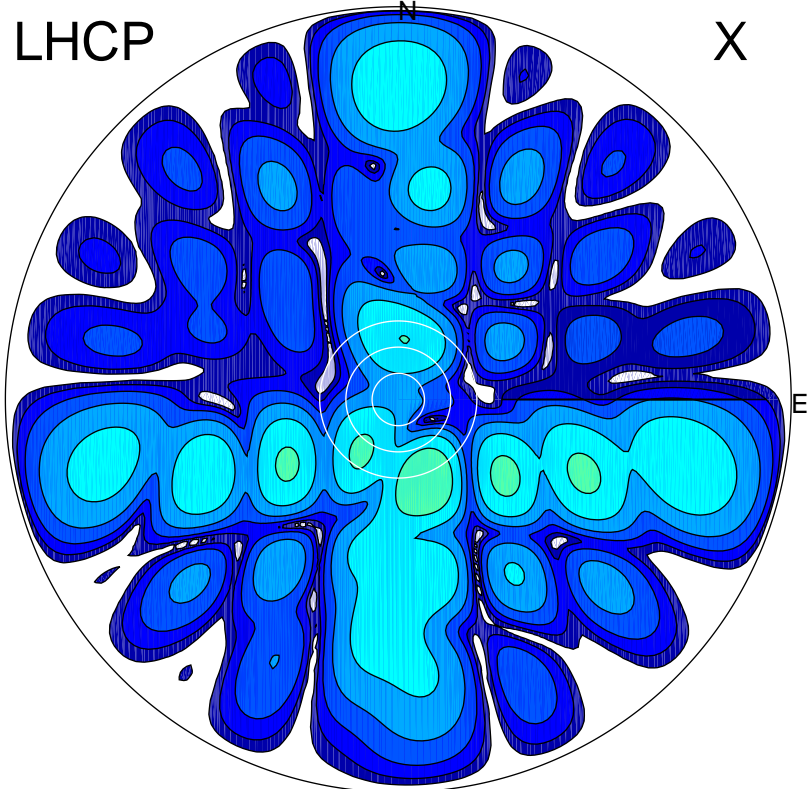


2018-09-21 16:14:41 A2 4.06000000 MHz 874.0 kW



ERP 0.5 MW

Peak gain -2.6 dBi at Az 162 Zen 20
RHCP gain 16.9 dBi
N-S peak -6.7 dBi at Zen -21.2
N-S -3 dB beamwidth 13.3 deg.

ERP 153.3 MW

Peak gain 22.4 dBi at Az 180 Zen 12
LHCP gain -12.4 dBi
N-S peak 22.5 dBi at Zen -11.6
N-S -3 dB beamwidth 13.9 deg.