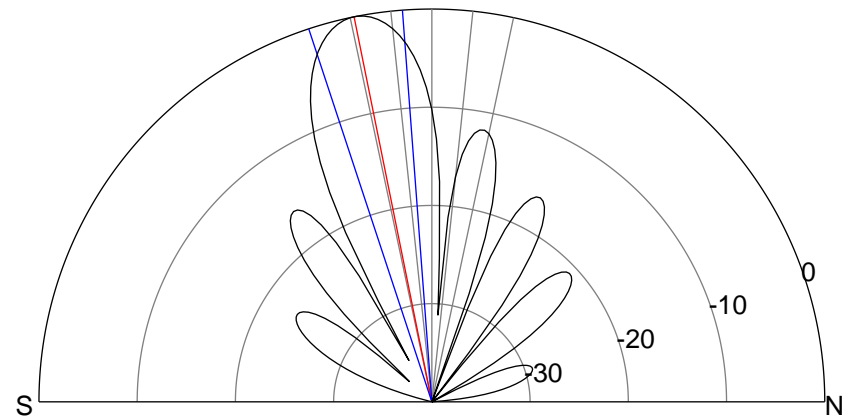
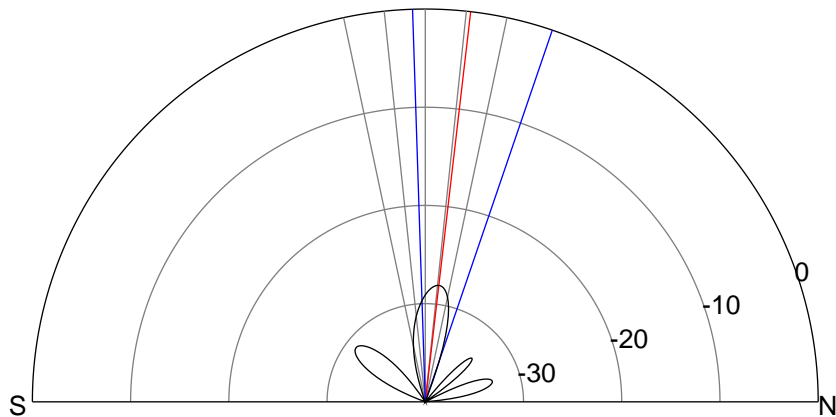
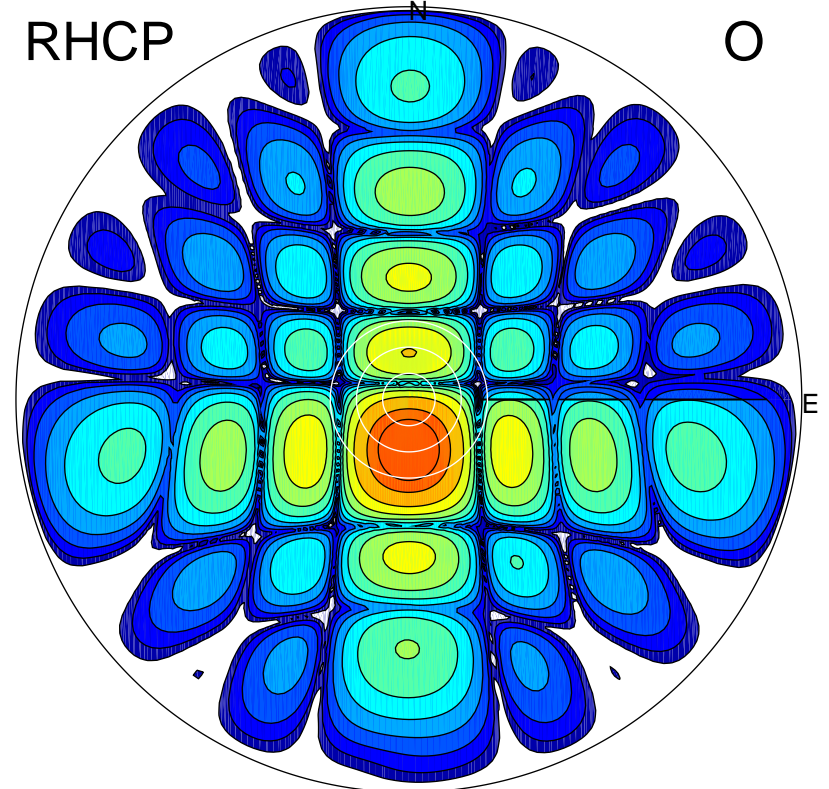
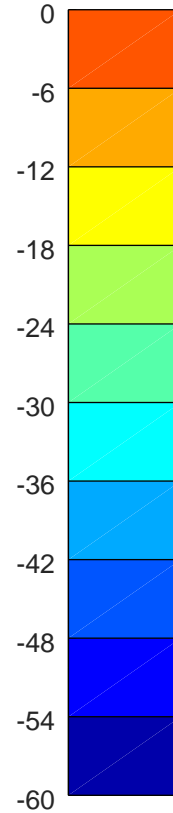
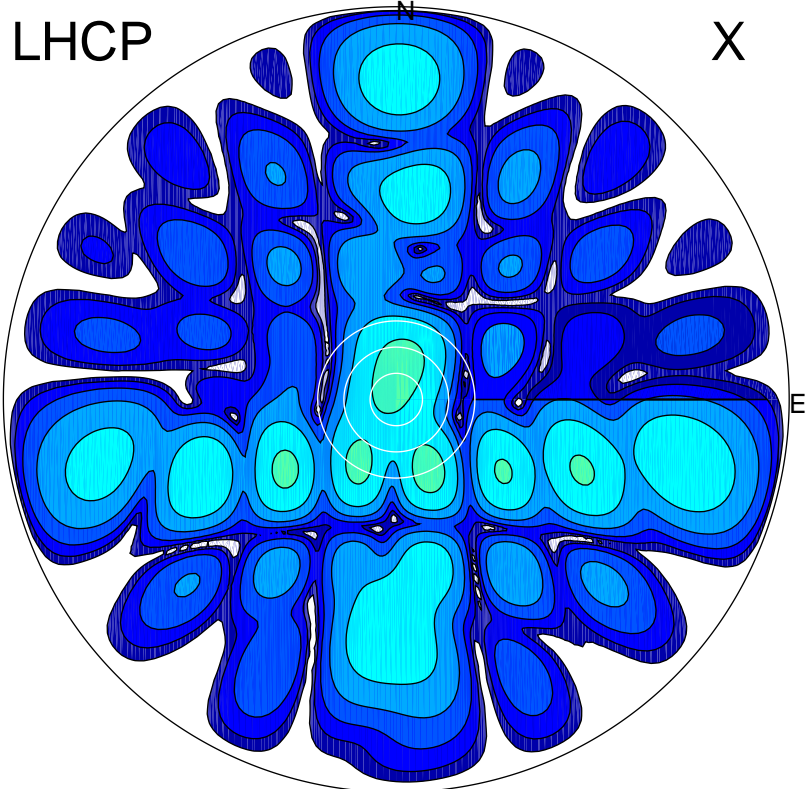


2018-09-21 16:13:41 A2 4.04000000 MHz 866.0 kW



ERP 0.2 MW

Peak gain -5.5 dBi at Az 155 Zen 18
RHCP gain 17.5 dBi
N-S peak -5.7 dBi at Zen 6.6
N-S -3 dB beamwidth 20.7 deg.

ERP 150.5 MW

Peak gain 22.4 dBi at Az 181 Zen 11
LHCP gain -11.3 dBi
N-S peak 22.4 dBi at Zen -11.4
N-S -3 dB beamwidth 14.0 deg.