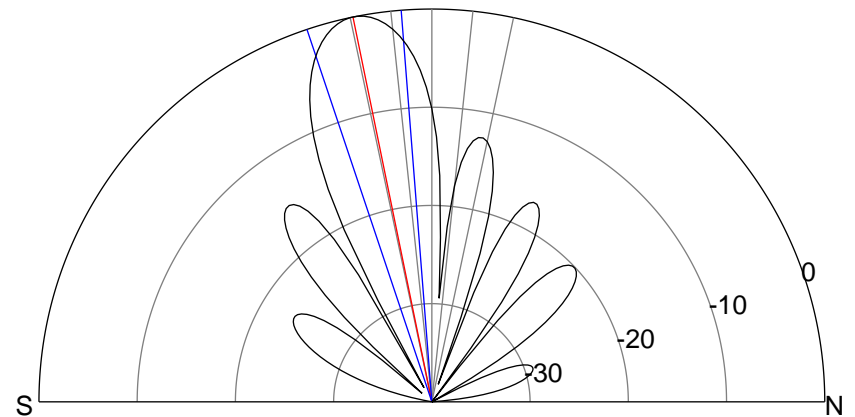
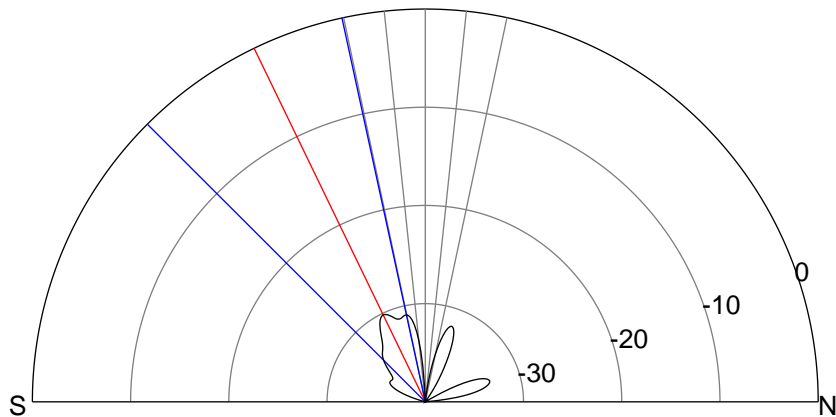
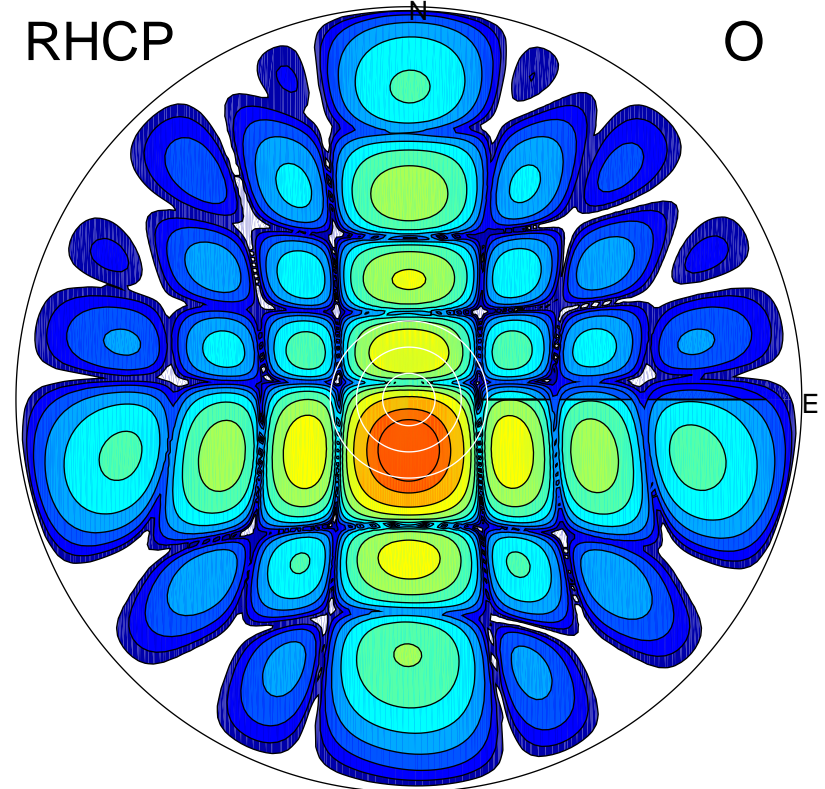
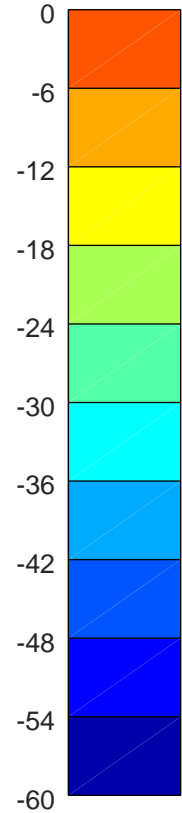
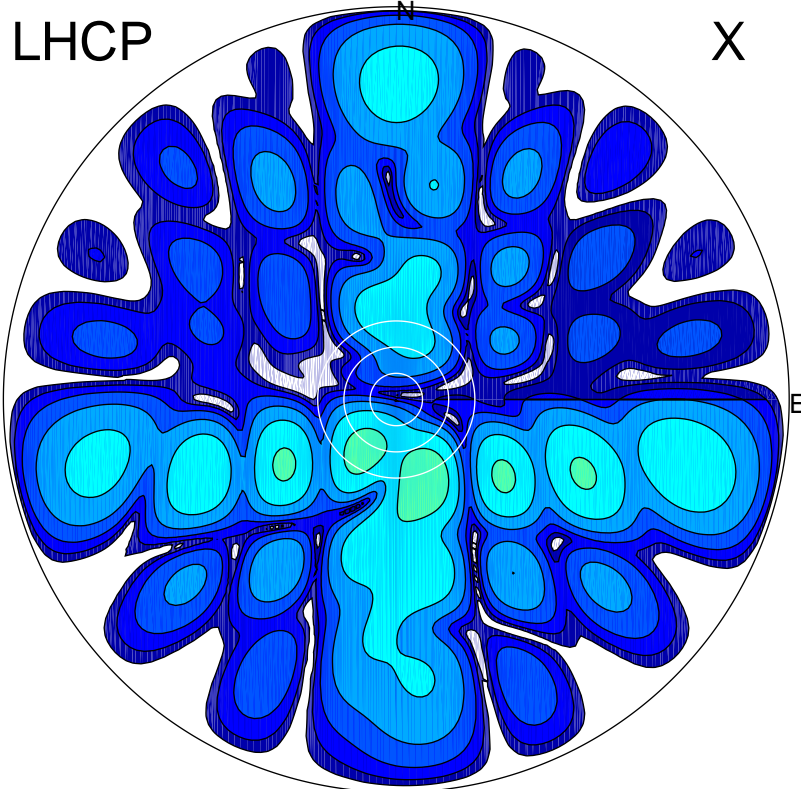


2018-09-21 16:12:41 A2 4.02000000 MHz 868.0 kW



ERP 0.4 MW

Peak gain -3.7 dBi at Az 161 Zen 20
RHCP gain 16.7 dBi
N-S peak -7.8 dBi at Zen -25.8
N-S -3 dB beamwidth 32.8 deg.

ERP 149.8 MW

Peak gain 22.4 dBi at Az 180 Zen 12
LHCP gain -8.6 dBi
N-S peak 22.4 dBi at Zen -11.6
N-S -3 dB beamwidth 14.1 deg.