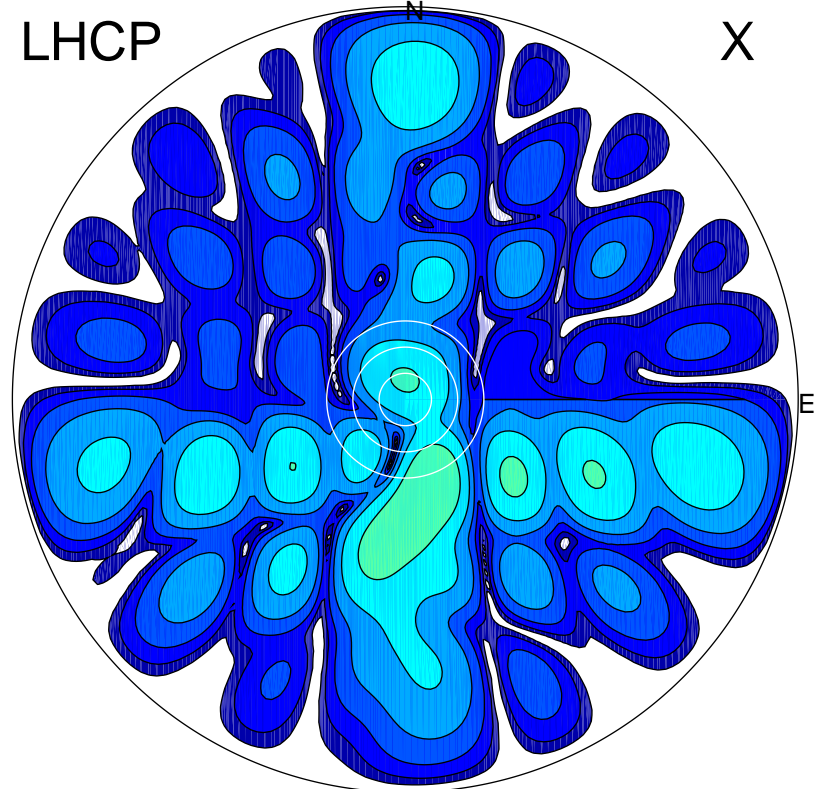


2018-09-21 16:11:41 A2 4.00000000 MHz 867.0 kW

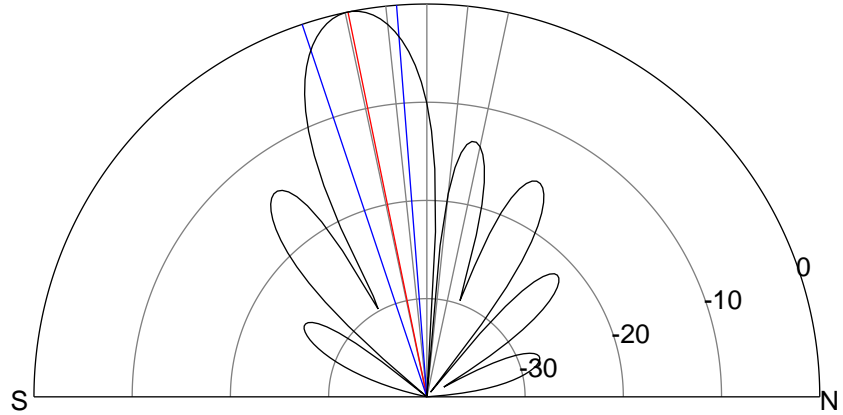
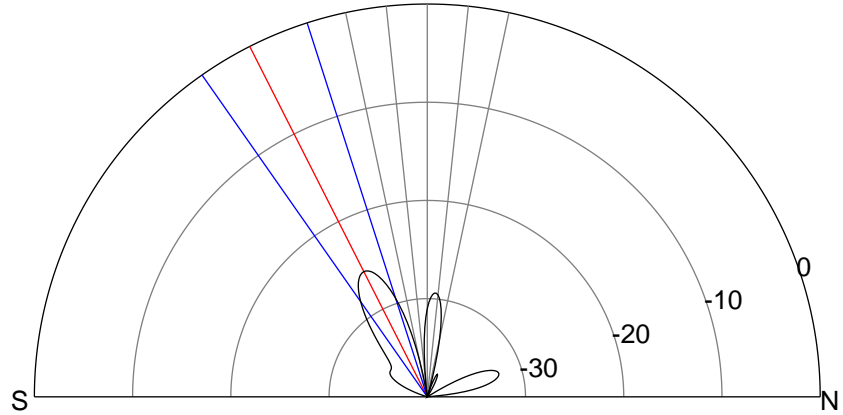
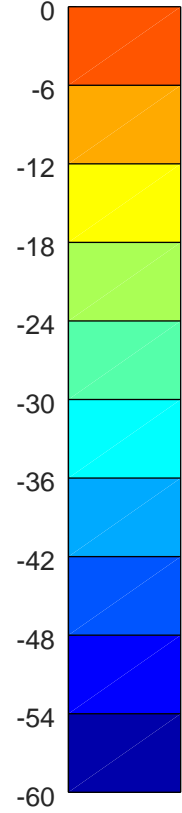
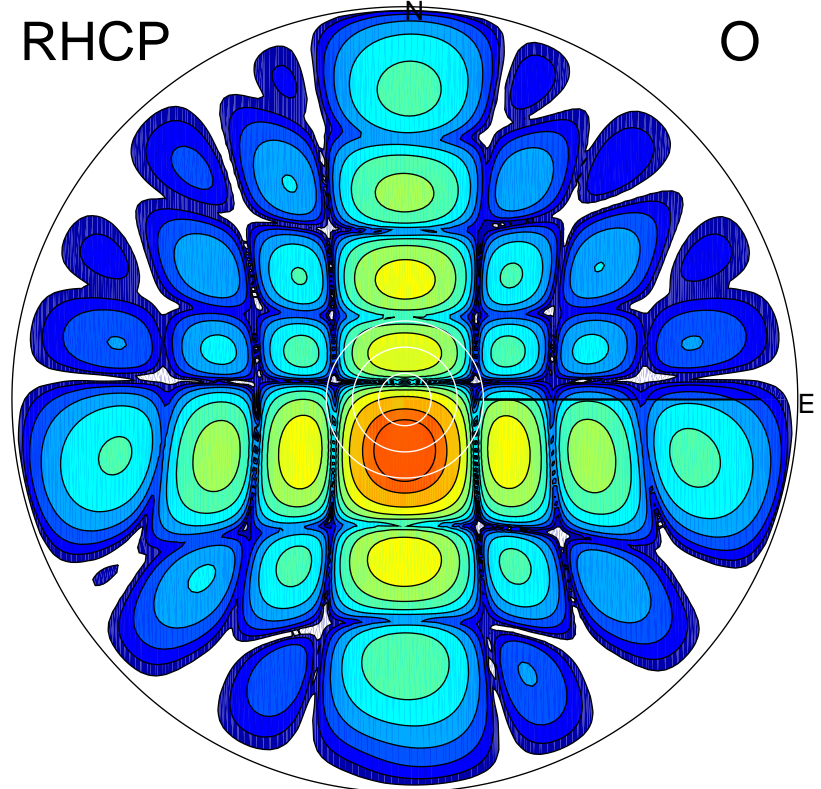
LHCP

X



RHCP

O



ERP 0.5 MW

Peak gain -2.3 dBi at Az 165 Zen 21
RHCP gain 16.1 dBi
N-S peak -3.4 dBi at Zen -26.9
N-S -3 dB beamwidth 17.2 deg.

ERP 148.0 MW

Peak gain 22.3 dBi at Az 180 Zen 12
LHCP gain -13.8 dBi
N-S peak 22.3 dBi at Zen -11.6
N-S -3 dB beamwidth 14.1 deg.