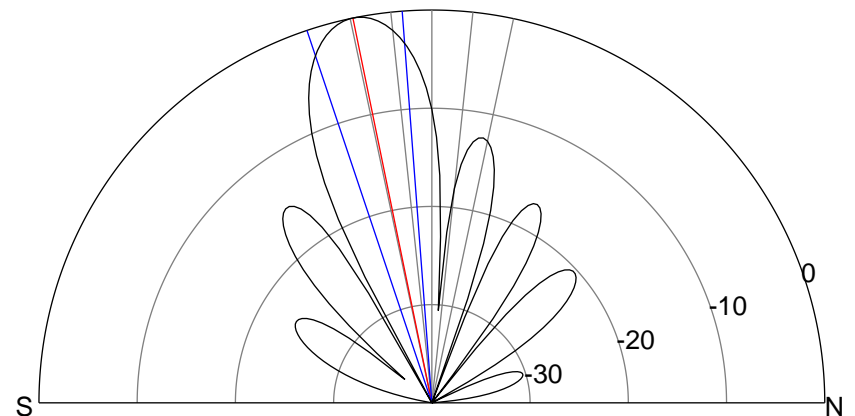
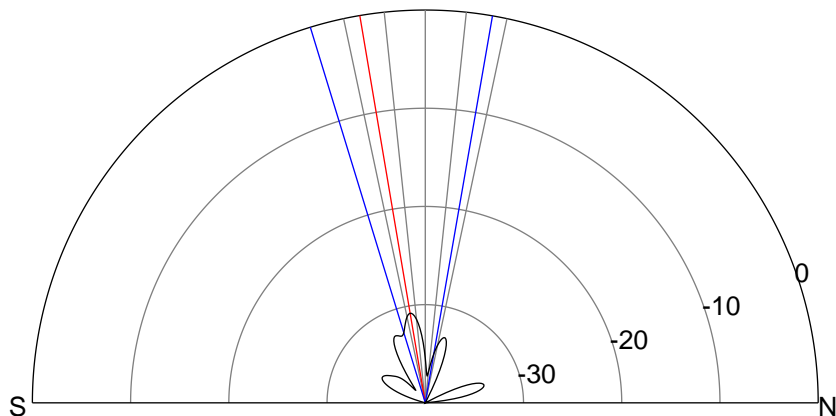
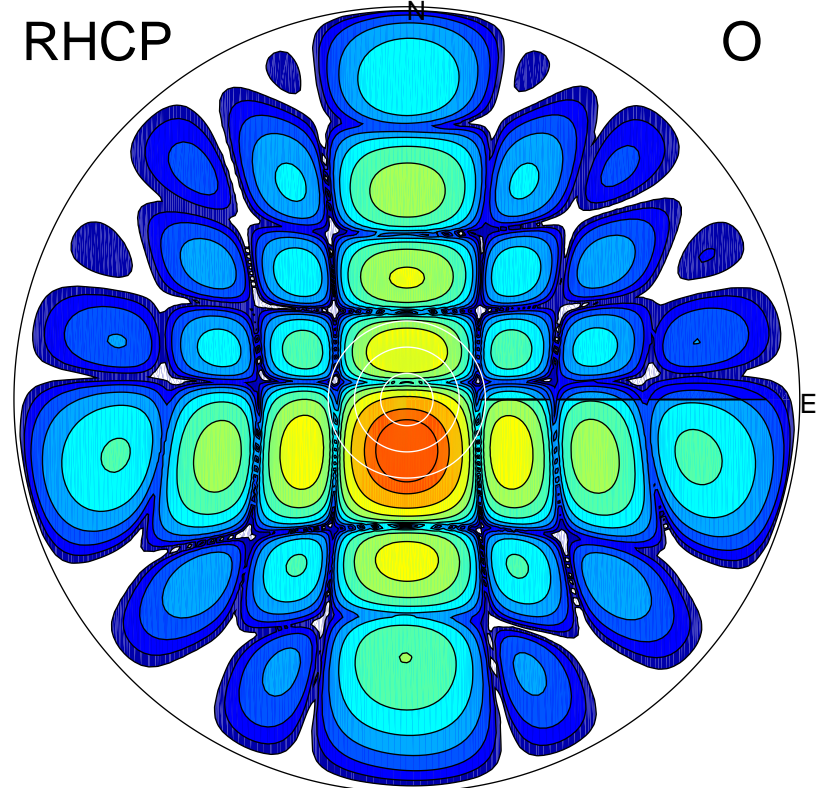
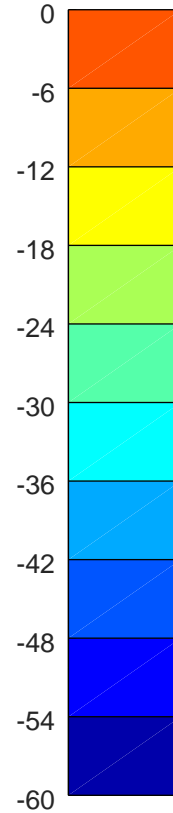
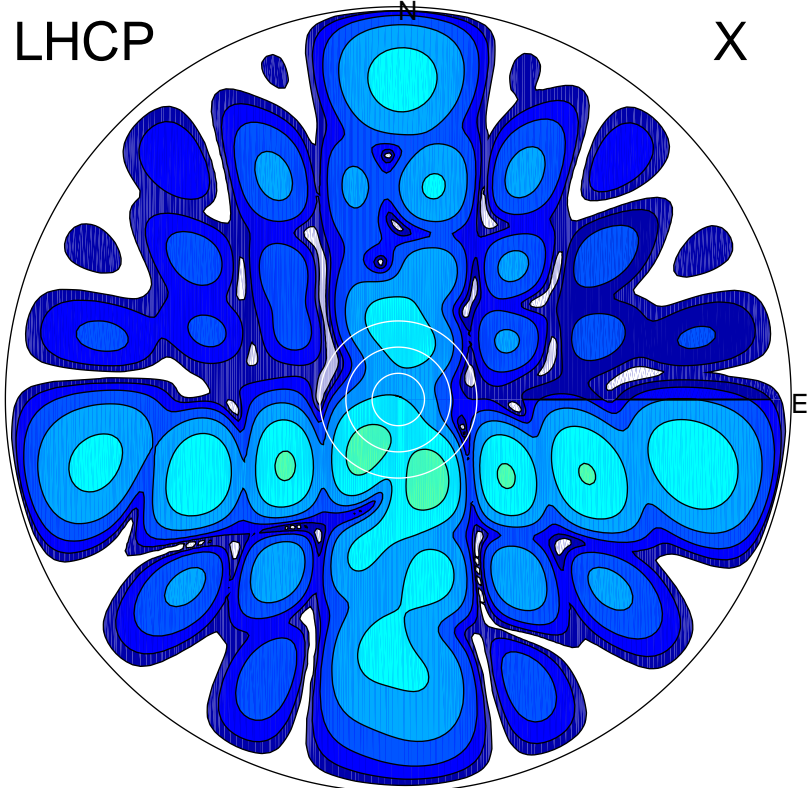


2018-09-21 16:10:41 A2 3.98000000 MHz 869.0 kW



### ERP 0.3 MW

Peak gain -4.7 dBi at Az 160 Zen 20  
RHCP gain 16.7 dBi  
N-S peak -8.5 dBi at Zen -9.6  
N-S -3 dB beamwidth 26.9 deg.

### ERP 147.2 MW

Peak gain 22.3 dBi at Az 179 Zen 12  
LHCP gain -8.8 dBi  
N-S peak 22.3 dBi at Zen -11.6  
N-S -3 dB beamwidth 14.2 deg.