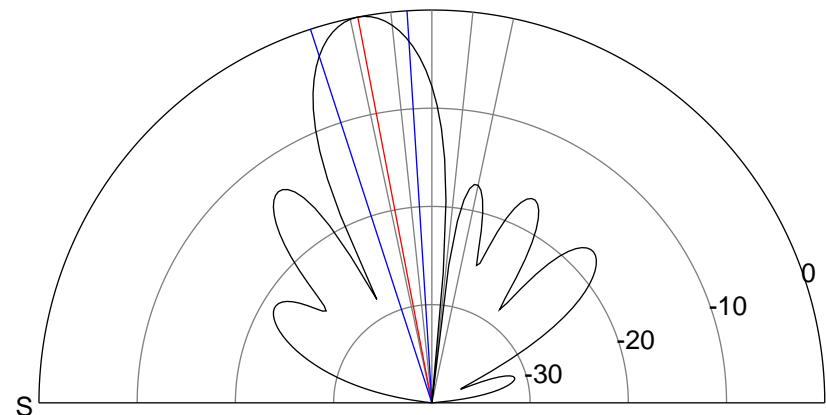
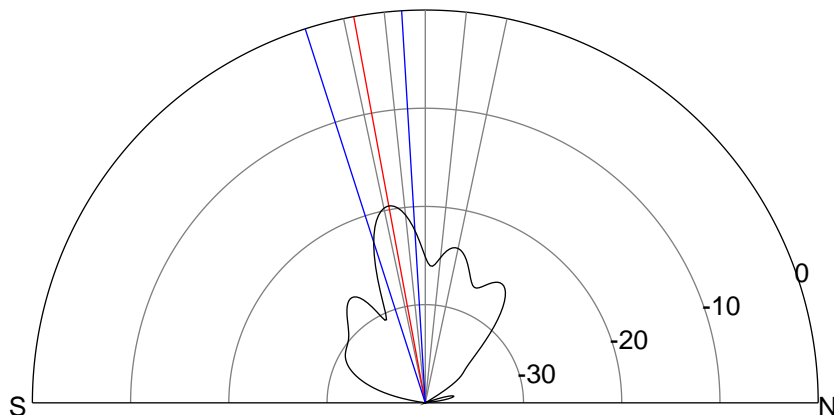
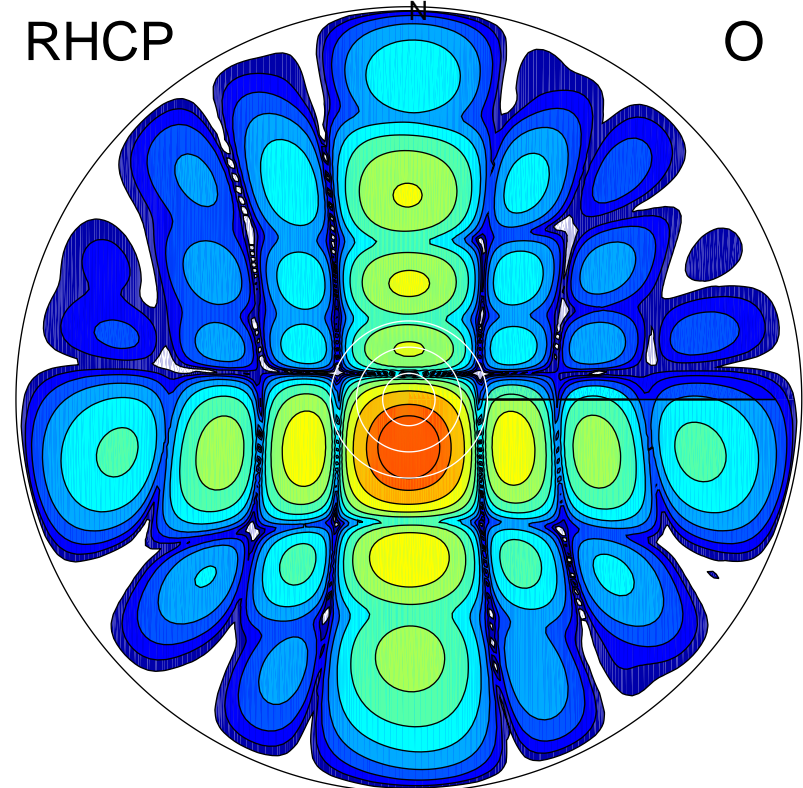
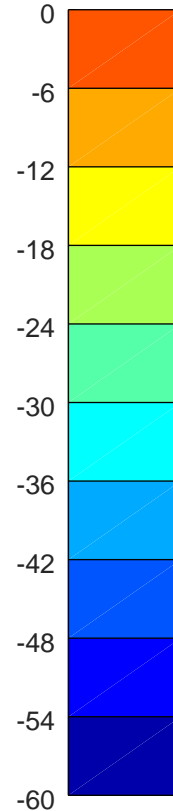
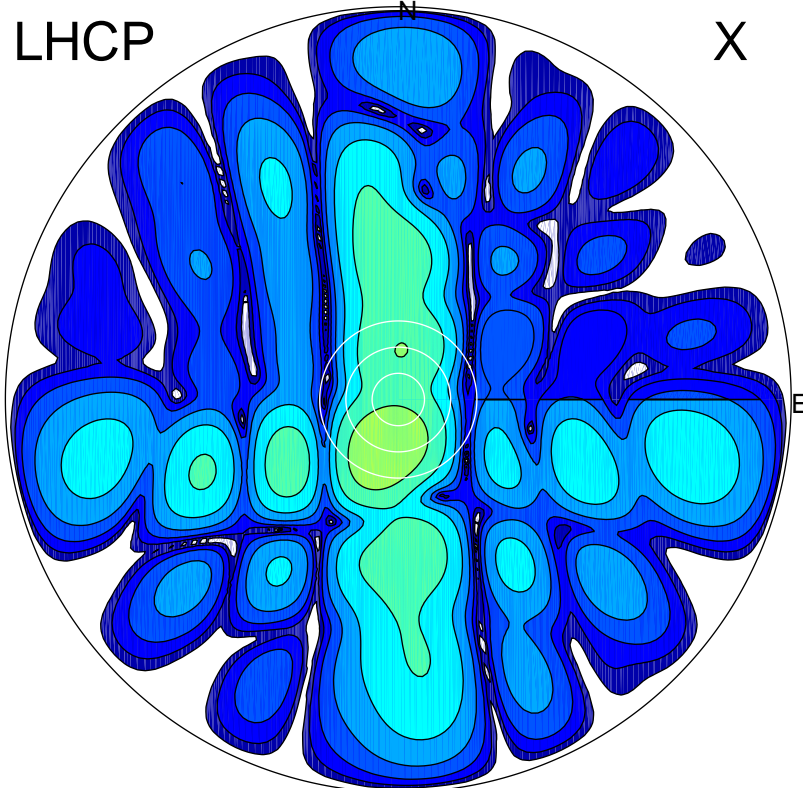


2018-09-21 16:10:26 A2 3.98000000 MHz 526.0 kW



ERP 1.1 MW

Peak gain 3.0 dBi at Az 197 Zen 12
RHCP gain 21.4 dBi
N-S peak 2.5 dBi at Zen -10.5
N-S -3 dB beamwidth 14.3 deg.

ERP 86.0 MW

Peak gain 22.1 dBi at Az 179 Zen 11
LHCP gain 2.5 dBi
N-S peak 22.1 dBi at Zen -10.9
N-S -3 dB beamwidth 14.4 deg.