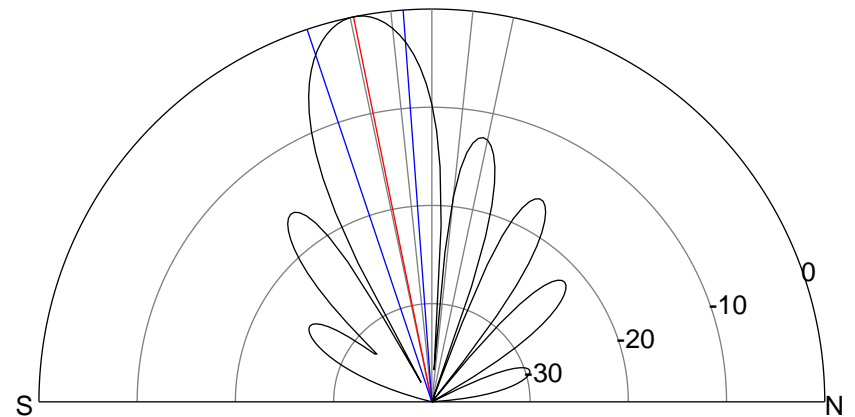
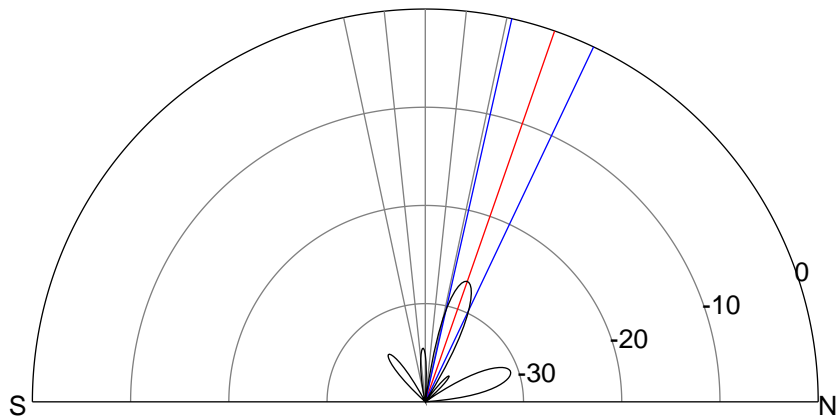
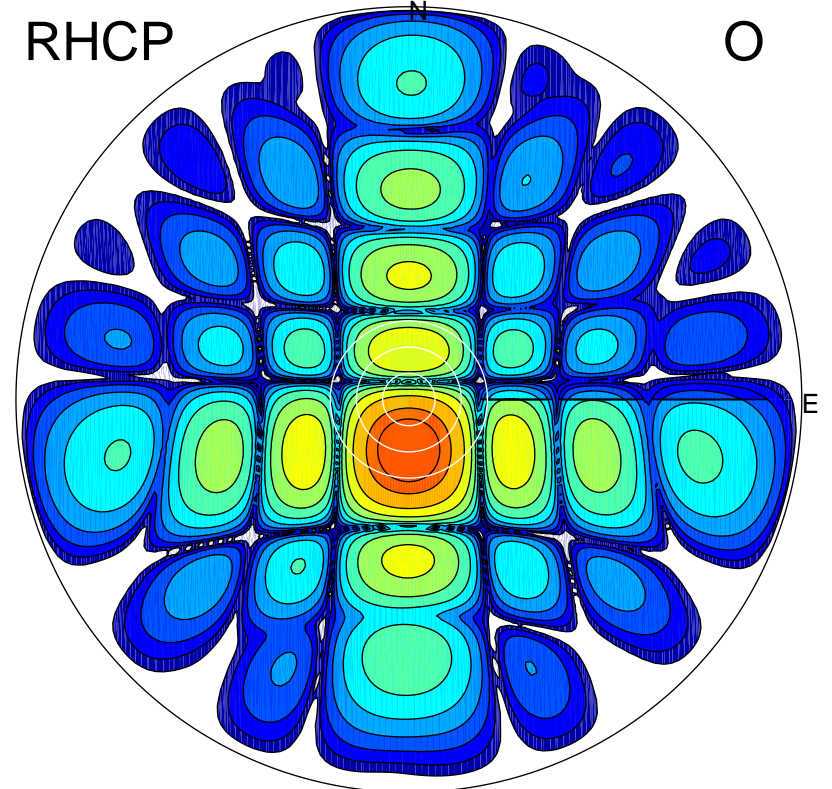
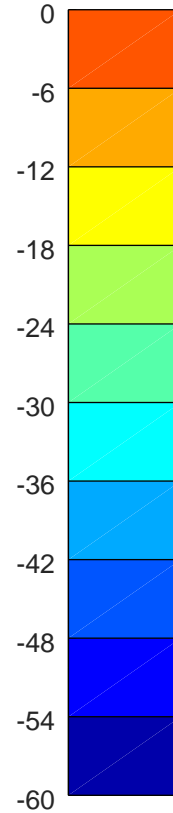
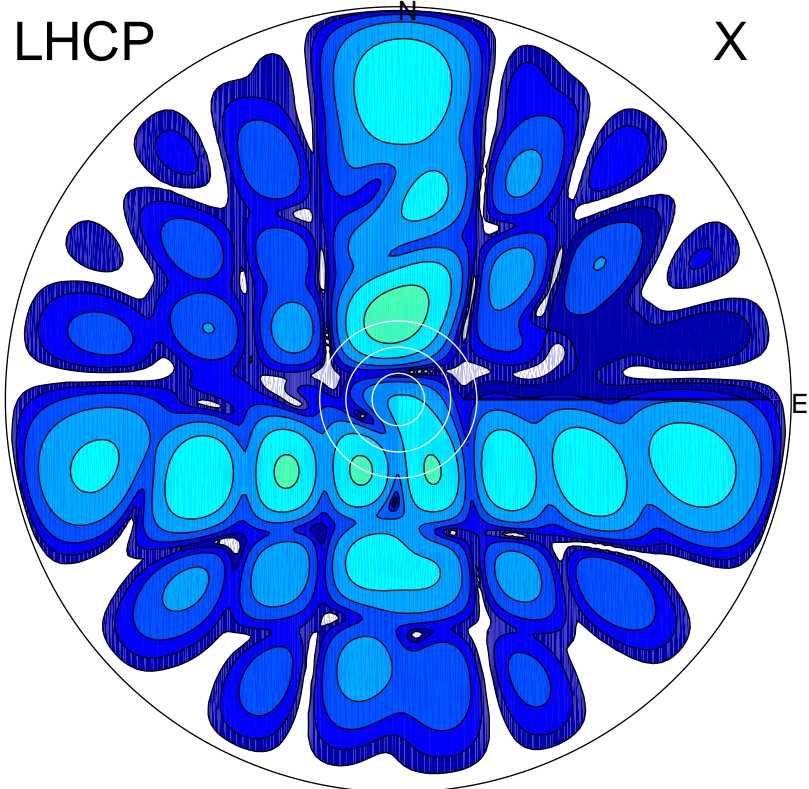


2018-09-21 16:10:11 A2 3.98000000 MHz 235.0 kW



ERP 0.1 MW

Peak gain -4.7 dBi at Az 358 Zen 19
RHCP gain -5.3 dBi
N-S peak -4.7 dBi at Zen 19.2
N-S -3 dB beamwidth 12.6 deg.

ERP 39.7 MW

Peak gain 22.3 dBi at Az 181 Zen 12
LHCP gain -17.3 dBi
N-S peak 22.3 dBi at Zen -11.5
N-S -3 dB beamwidth 14.3 deg.