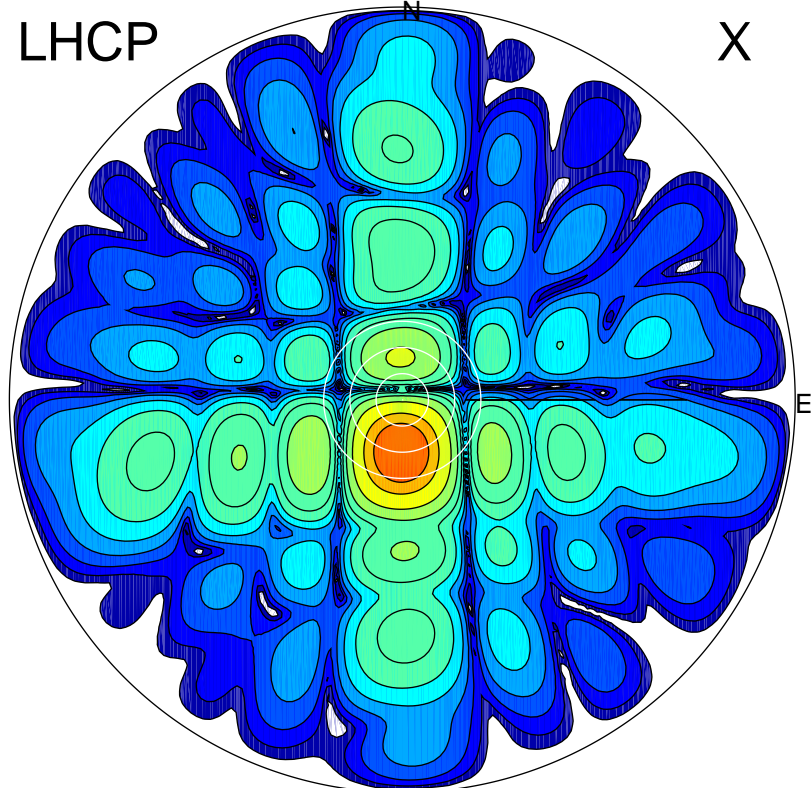


2018-07-18 10:50:03 A2 4.54400000 MHz 768.0 kW

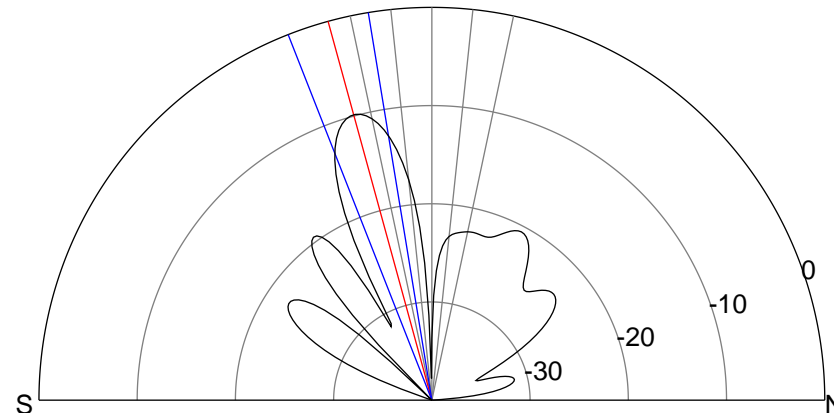
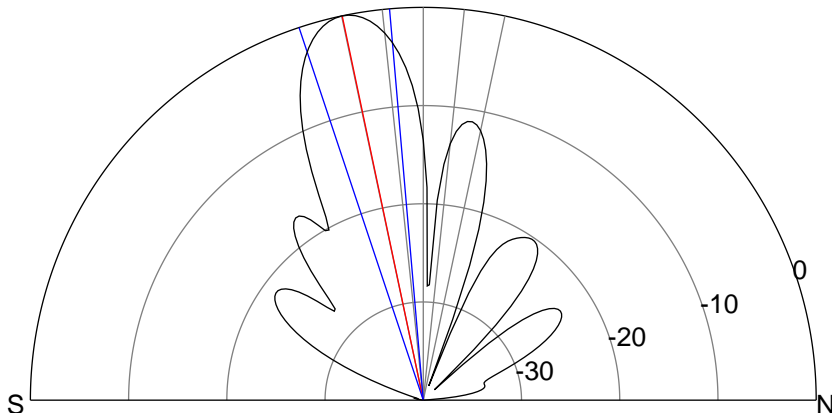
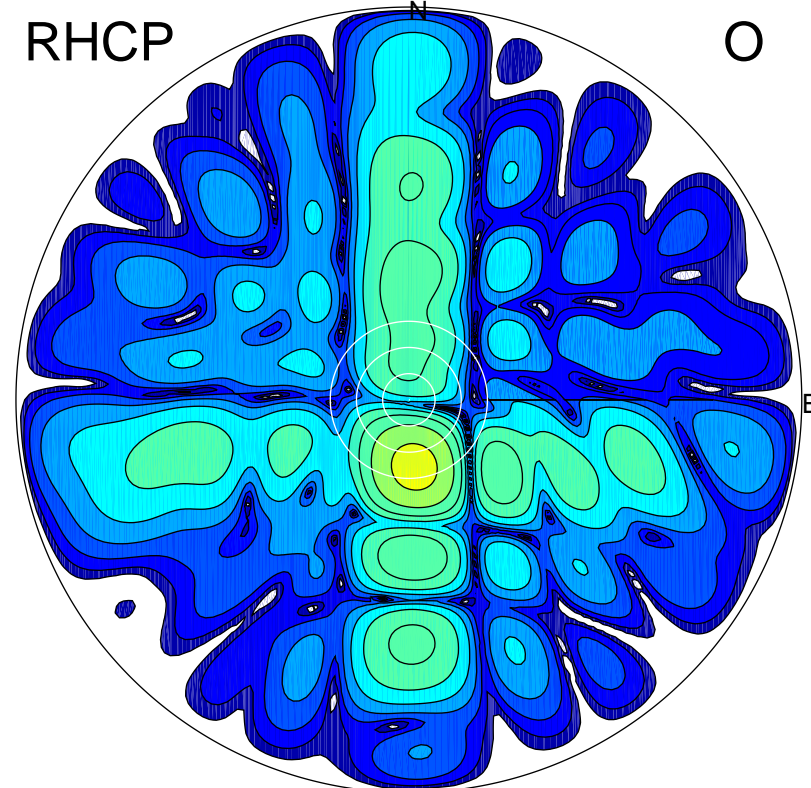
LHCP

X



RHCP

O



ERP 135.4 MW

Peak gain 22.5 dBi at Az 182 Zen 12
RHCP gain 11.7 dBi
N-S peak 22.5 dBi at Zen -11.9
N-S -3 dB beamwidth 13.5 deg.

ERP 14.4 MW

Peak gain 12.7 dBi at Az 175 Zen 15
LHCP gain 21.7 dBi
N-S peak 12.6 dBi at Zen -15.3
N-S -3 dB beamwidth 12.1 deg.