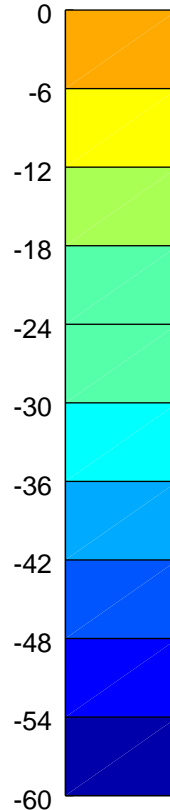
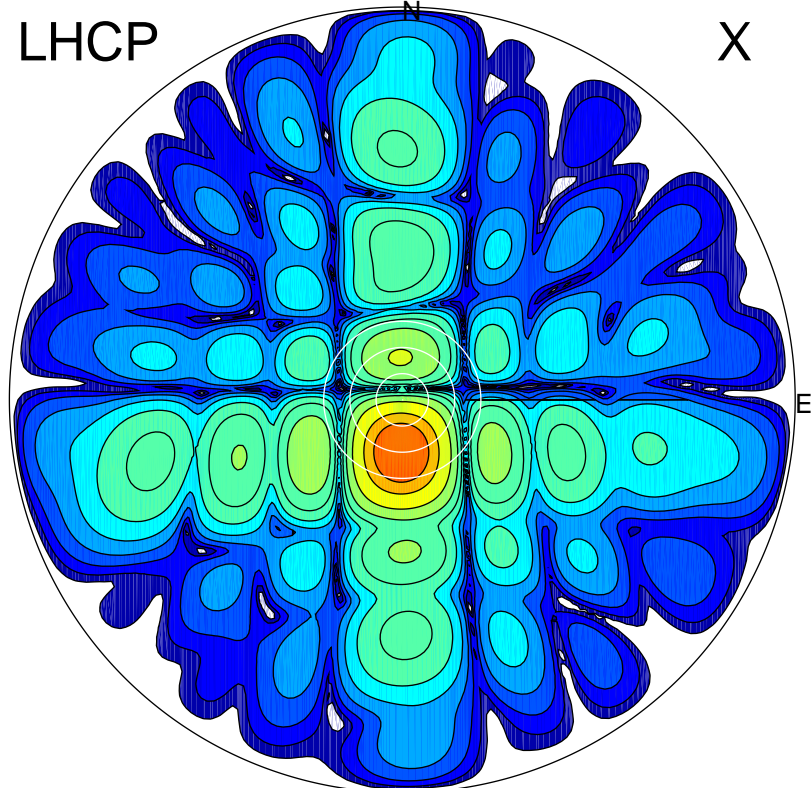


2018-07-18 10:50:00 A2 4.54400000 MHz 761.0 kW

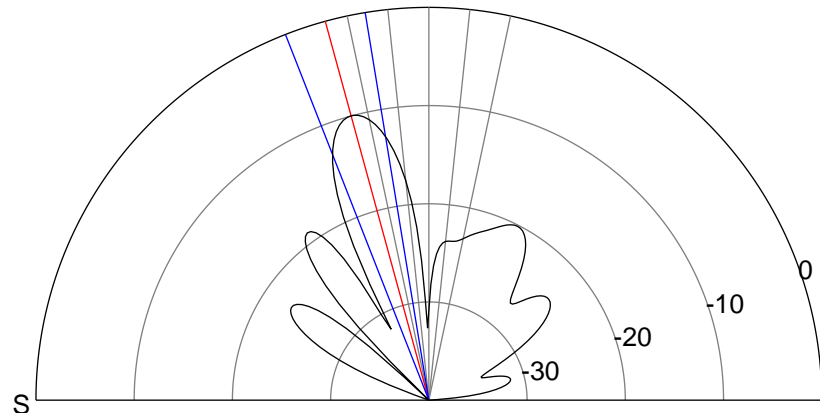
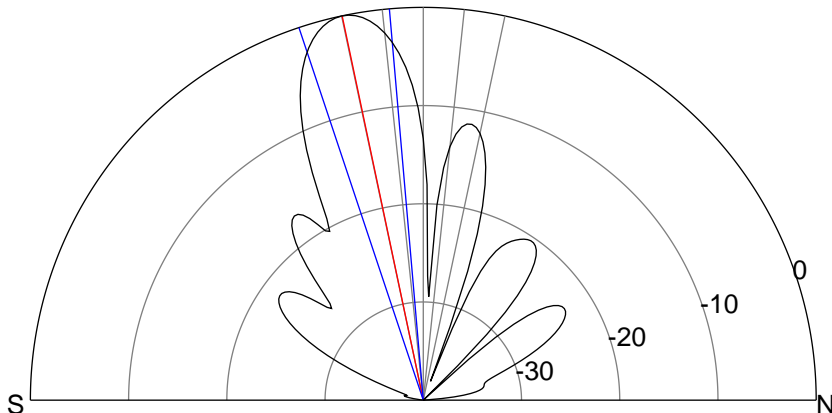
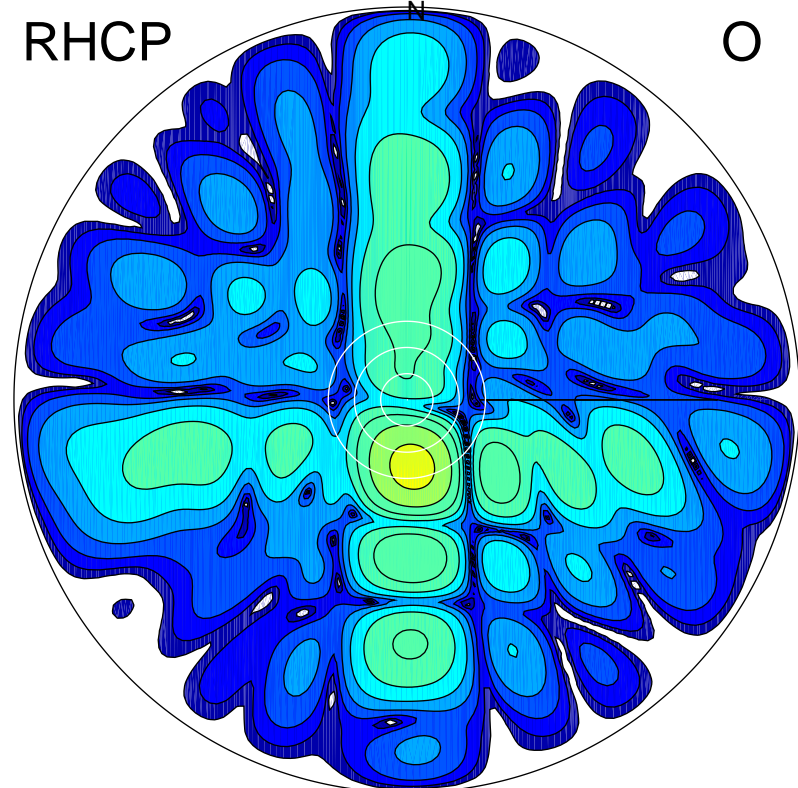
LHCP

X



RHCP

O



ERP 134.7 MW

Peak gain 22.5 dBi at Az 182 Zen 12
RHCP gain 11.6 dBi
N-S peak 22.5 dBi at Zen -11.9
N-S -3 dB beamwidth 13.5 deg.

ERP 14.0 MW

Peak gain 12.6 dBi at Az 175 Zen 15
LHCP gain 21.8 dBi
N-S peak 12.5 dBi at Zen -15.3
N-S -3 dB beamwidth 12.1 deg.