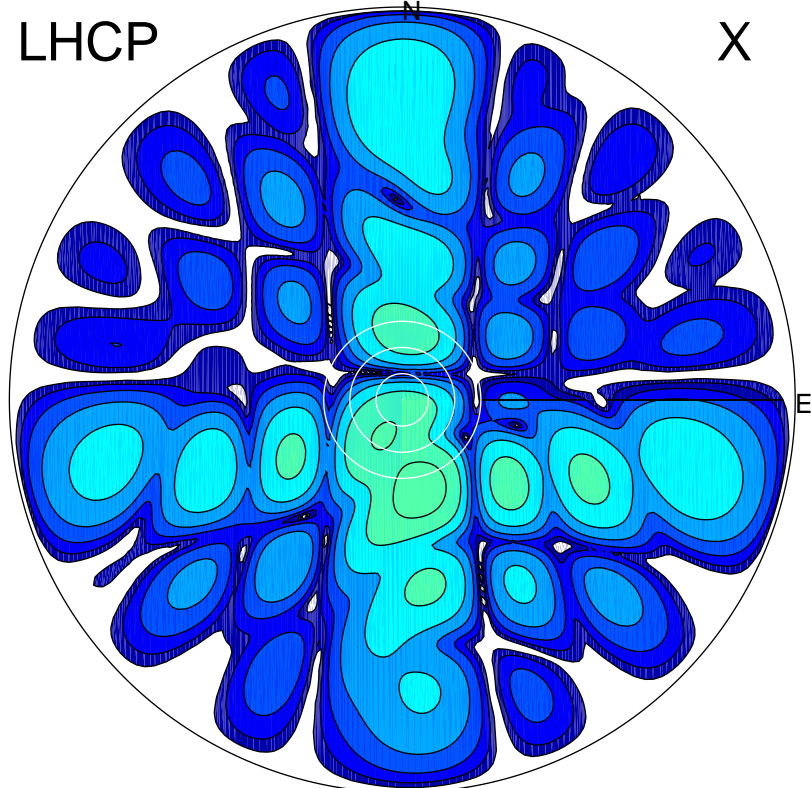


2018-07-06 12:29:06 A2 4.04000000 MHz 849.0 kW

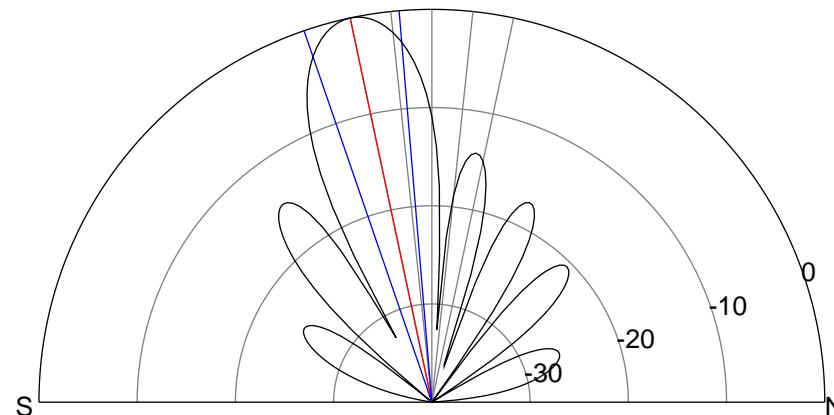
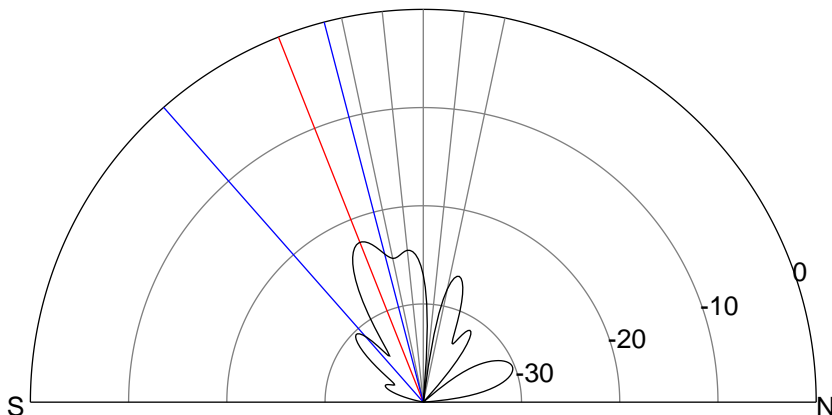
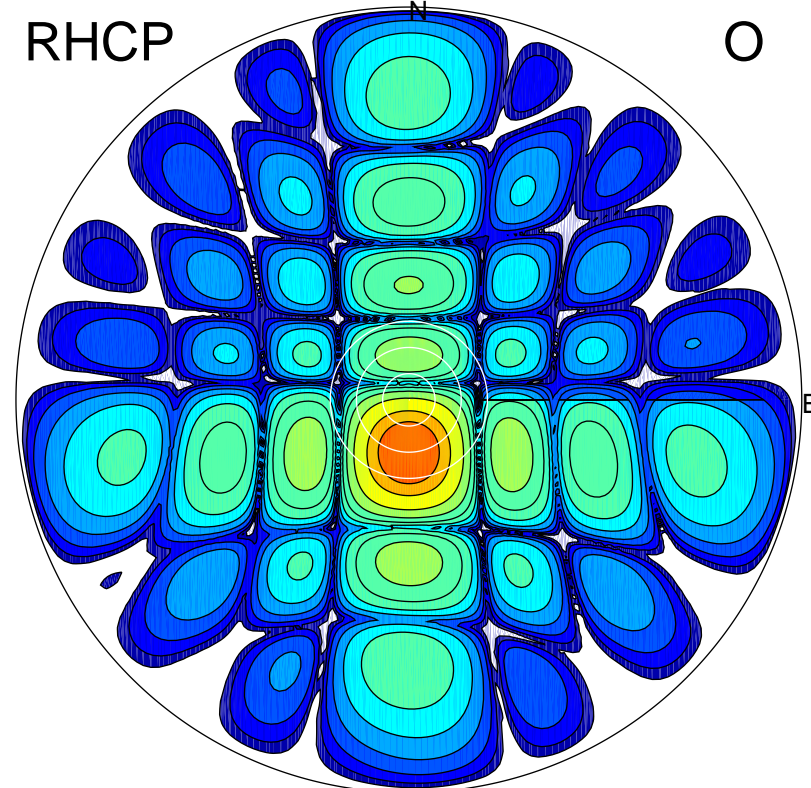
LHCP

X



RHCP

O



ERP 1.1 MW

Peak gain 1.2 dBi at Az 168 Zen 21
RHCP gain 17.0 dBi
N-S peak -0.1 dBi at Zen -21.6
N-S -3 dB beamwidth 26.7 deg.

ERP 146.0 MW

Peak gain 22.4 dBi at Az 179 Zen 12
LHCP gain -2.7 dBi
N-S peak 22.4 dBi at Zen -12.0
N-S -3 dB beamwidth 14.2 deg.