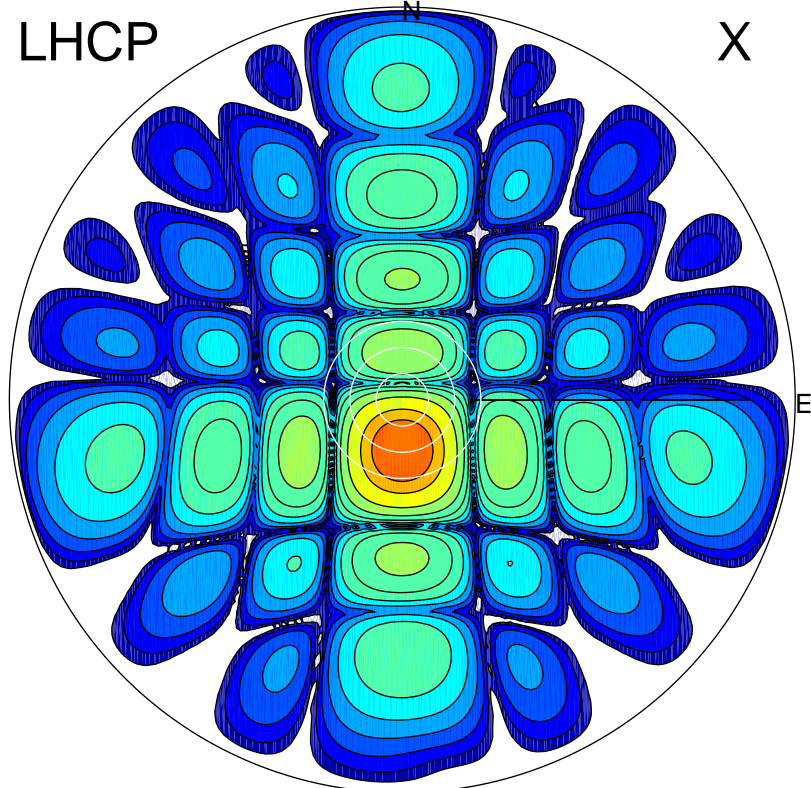


2018-07-06 12:21:30 A2 4.04000000 MHz 854.0 kW

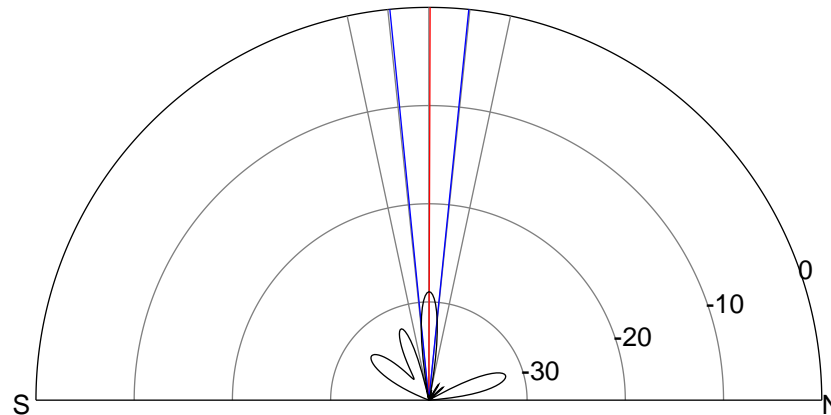
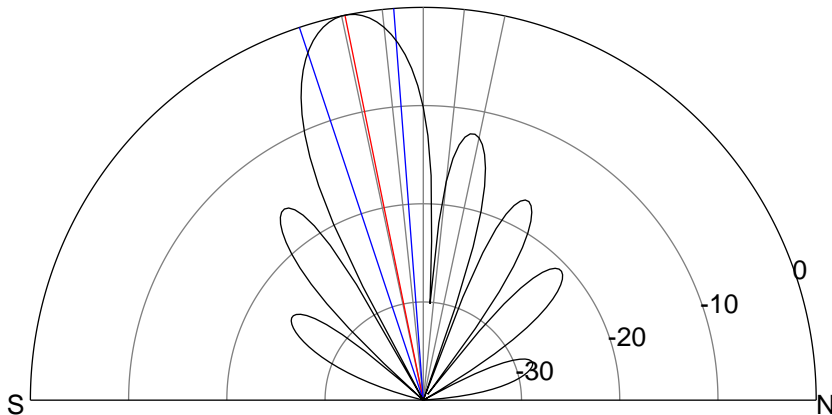
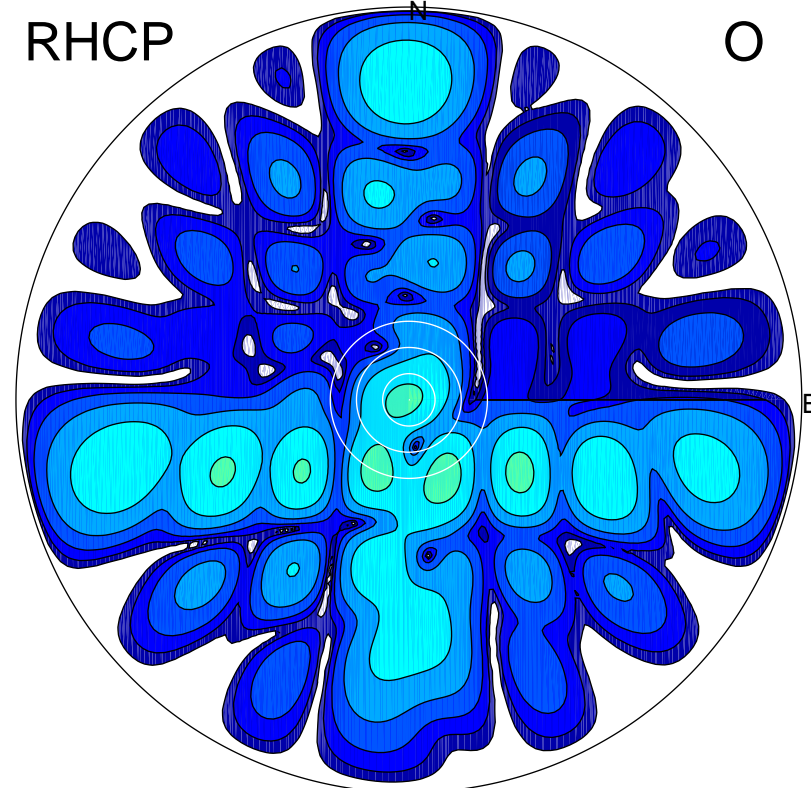
LHCP

X



RHCP

O



ERP 148.3 MW

Peak gain 22.4 dBi at Az 179 Zen 11
RHCP gain -19.9 dBi
N-S peak 22.4 dBi at Zen -11.5
N-S -3 dB beamwidth 14.1 deg.

ERP 0.2 MW

Peak gain -5.5 dBi at Az 155 Zen 19
LHCP gain 16.6 dBi
N-S peak -6.6 dBi at Zen 0.2
N-S -3 dB beamwidth 11.5 deg.