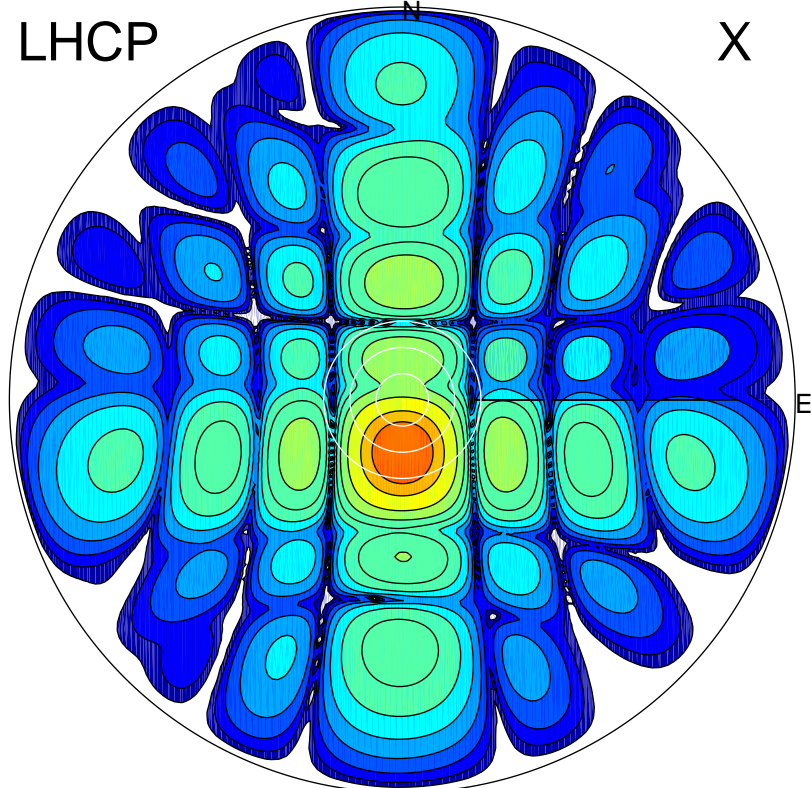


2018-04-25 13:31:06 A2 4.04000000 MHz 801.0 kW

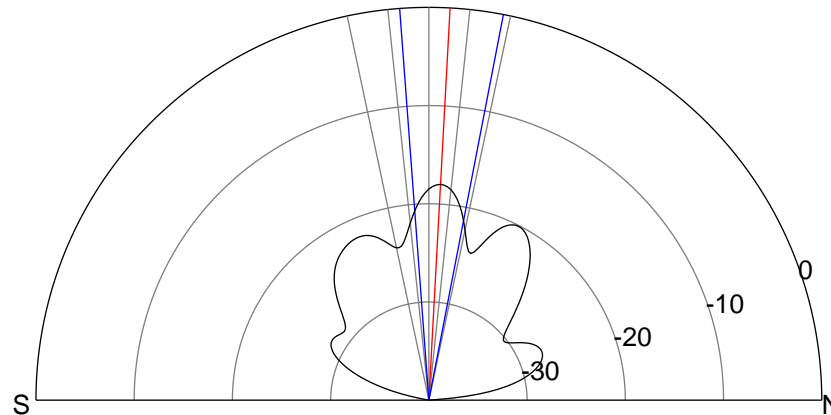
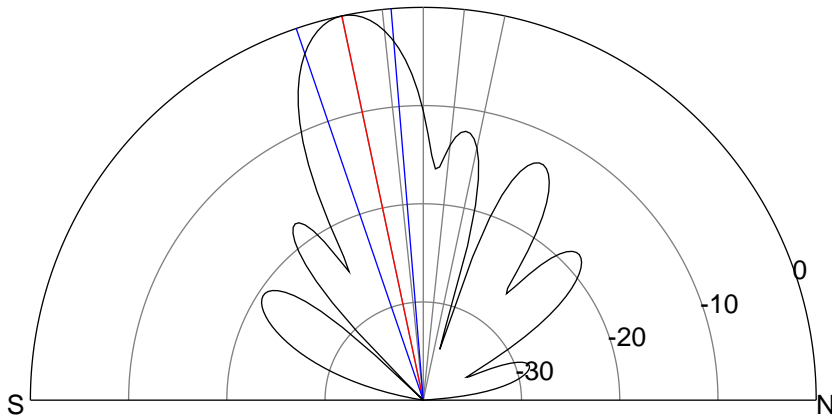
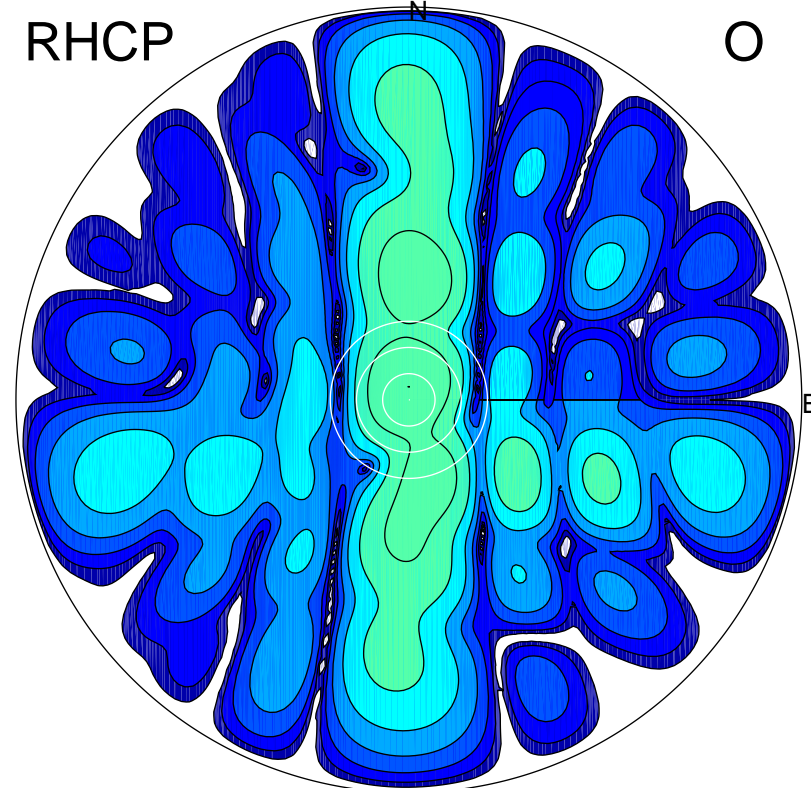
LHCP

X



RHCP

O



### ERP 129.1 MW

Peak gain 22.1 dBi at Az 181 Zen 12  
RHCP gain -2.2 dBi  
N-S peak 22.1 dBi at Zen -12.0  
N-S -3 dB beamwidth 14.2 deg.

### ERP 2.0 MW

Peak gain 4.1 dBi at Az 1 Zen 3  
LHCP gain 5.7 dBi  
N-S peak 4.1 dBi at Zen 3.1  
N-S -3 dB beamwidth 15.2 deg.