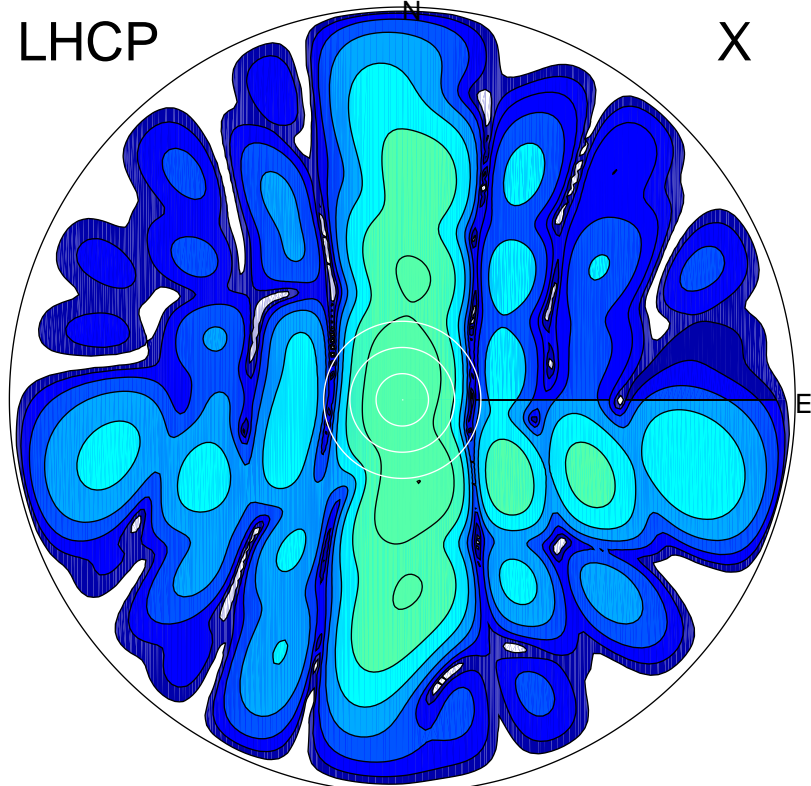


2018-04-25 13:31:03 A2 4.04000000 MHz 829.0 kW

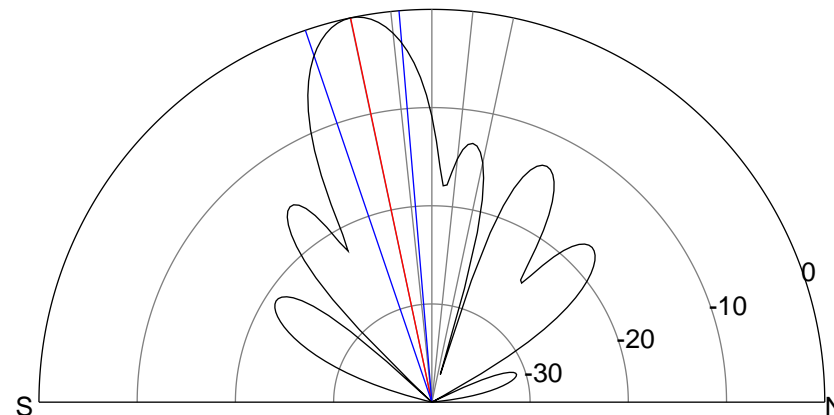
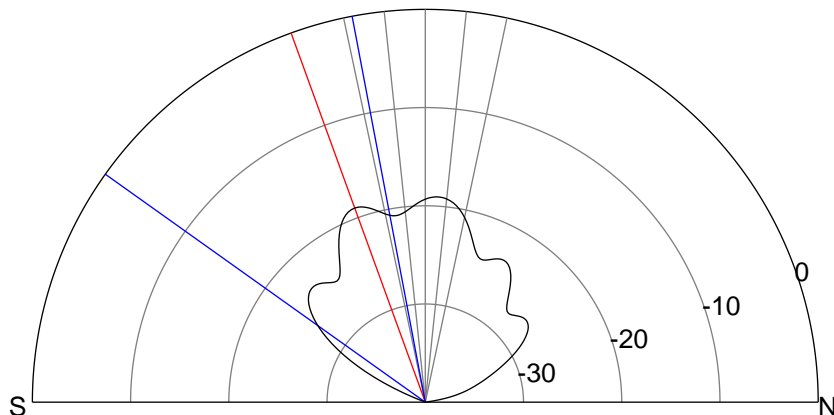
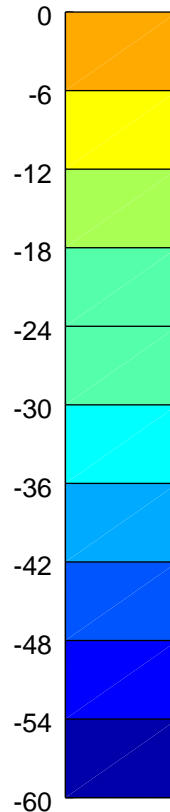
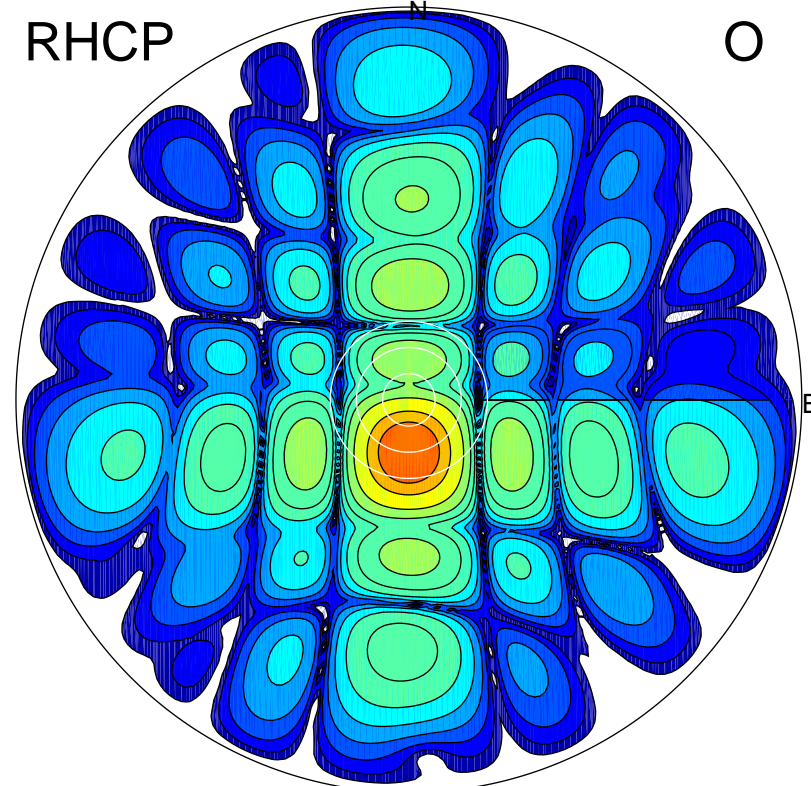
LHCP

X



RHCP

O



ERP 2.1 MW

Peak gain 4.1 dBi at Az 168 Zen 19
RHCP gain 18.7 dBi
N-S peak 3.2 dBi at Zen -20.0
N-S -3 dB beamwidth 43.8 deg.

ERP 135.1 MW

Peak gain 22.1 dBi at Az 181 Zen 12
LHCP gain 1.6 dBi
N-S peak 22.1 dBi at Zen -11.9
N-S -3 dB beamwidth 14.0 deg.