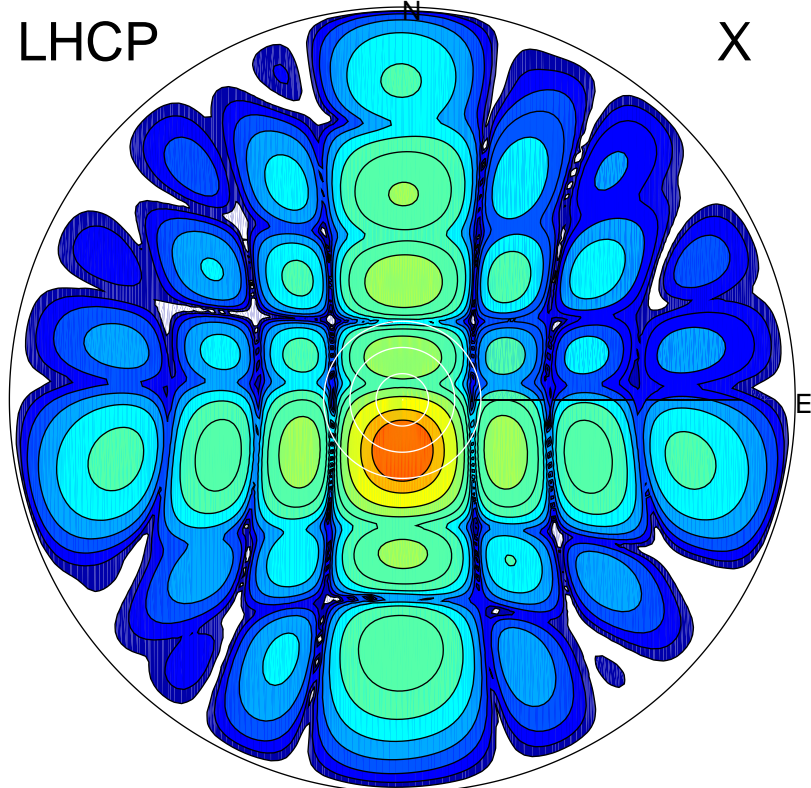


2018-04-25 12:23:00 A2 4.04000000 MHz 821.0 kW

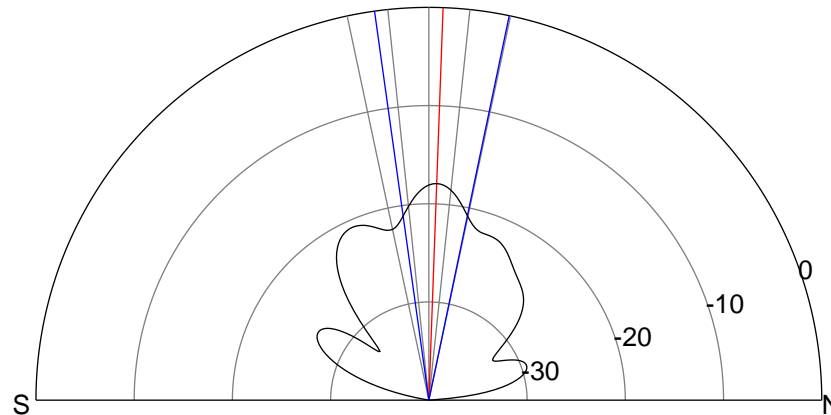
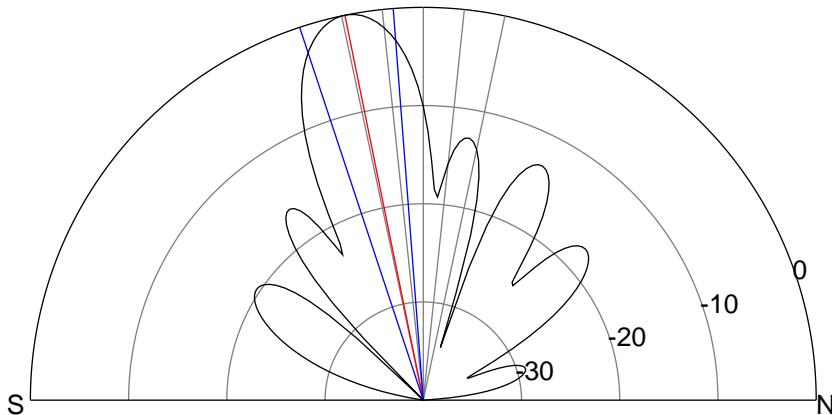
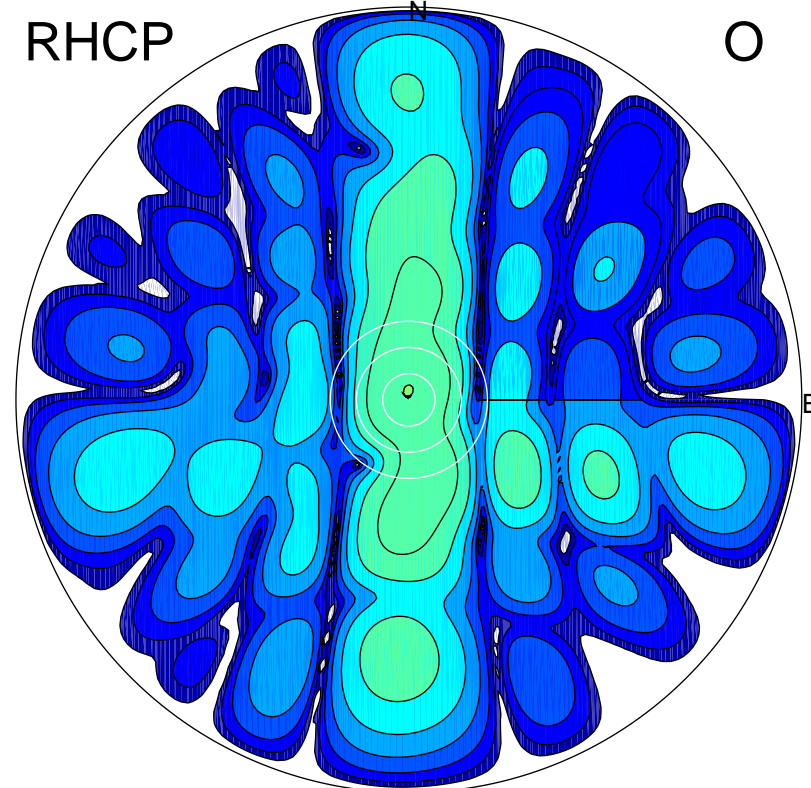
LHCP

X



RHCP

O



### ERP 133.6 MW

Peak gain 22.1 dBi at Az 181 Zen 12  
RHCP gain -0.2 dBi  
N-S peak 22.1 dBi at Zen -11.5  
N-S -3 dB beamwidth 13.9 deg.

### ERP 2.2 MW

Peak gain 4.2 dBi at Az 354 Zen 2  
LHCP gain 6.5 dBi  
N-S peak 4.2 dBi at Zen 2.1  
N-S -3 dB beamwidth 19.8 deg.