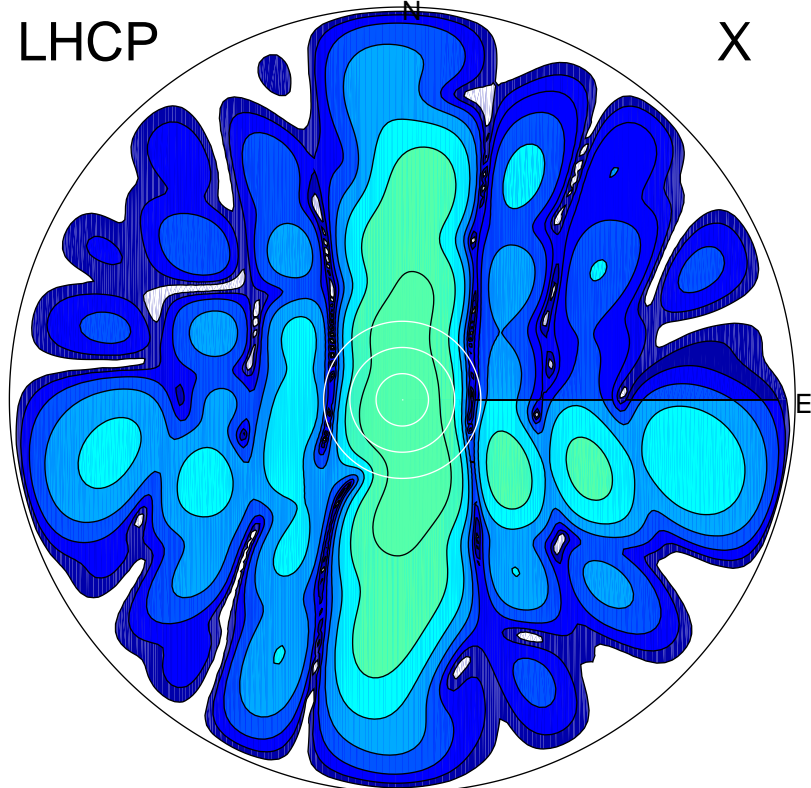


2018-04-25 12:15:36 A2 4.04000000 MHz 821.0 kW

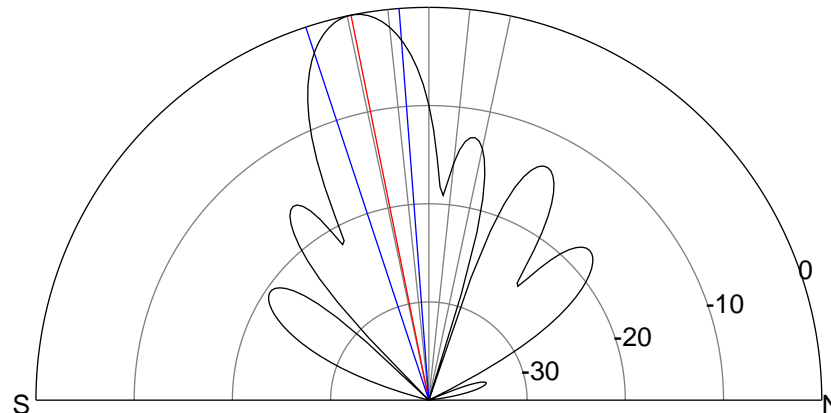
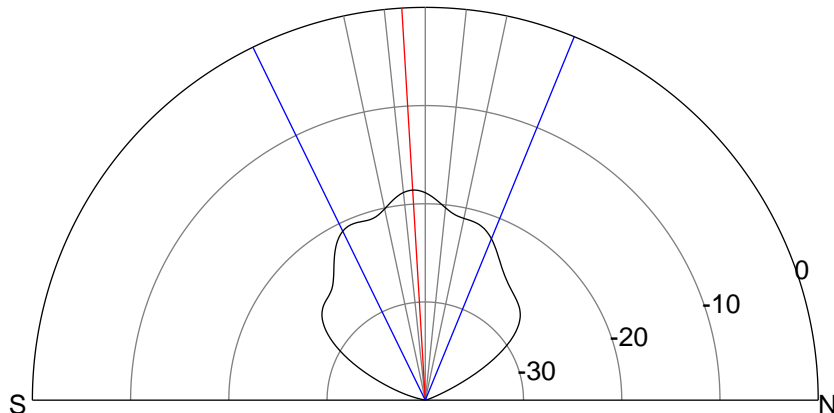
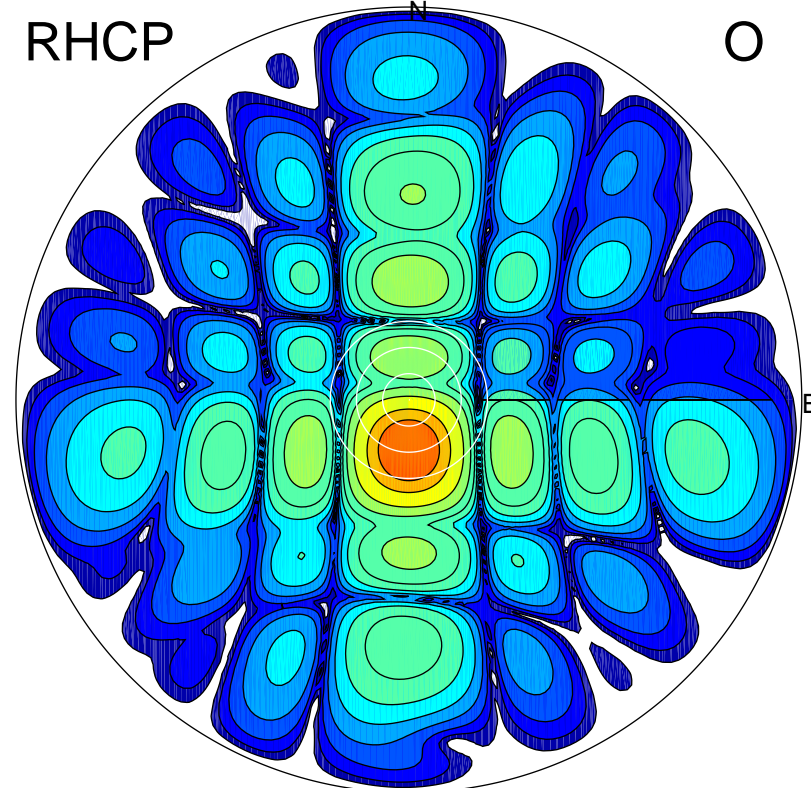
LHCP

X



RHCP

O



ERP 1.9 MW

Peak gain 3.6 dBi at Az 192 Zen 3
RHCP gain 17.3 dBi
N-S peak 3.6 dBi at Zen -3.4
N-S -3 dB beamwidth 48.3 deg.

ERP 134.2 MW

Peak gain 22.1 dBi at Az 181 Zen 11
LHCP gain 2.2 dBi
N-S peak 22.1 dBi at Zen -11.4
N-S -3 dB beamwidth 13.9 deg.