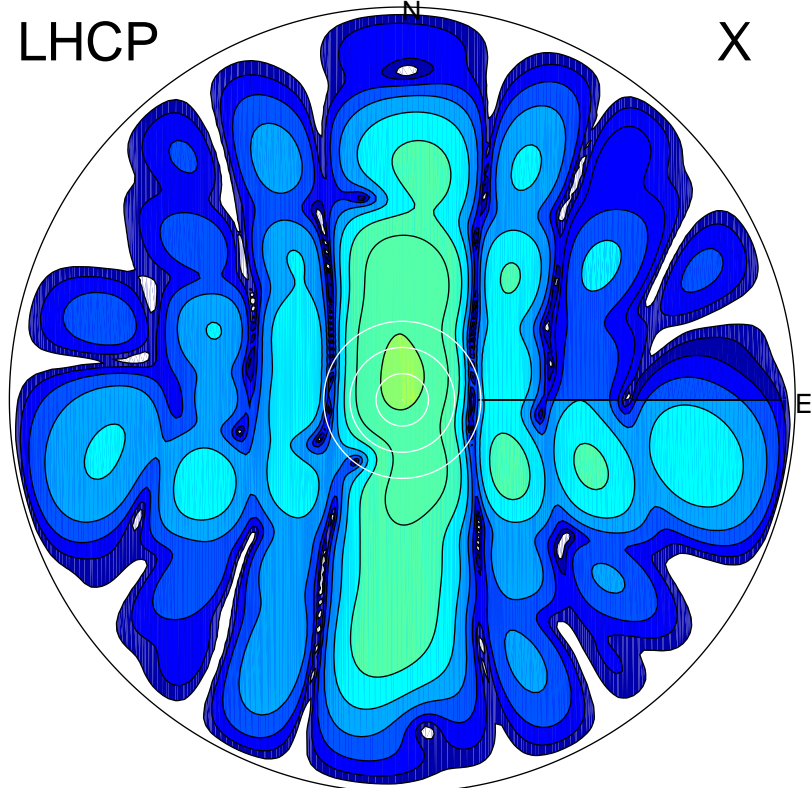


2018-04-23 10:00:05 A2 4.00000000 MHz 820.0 kW

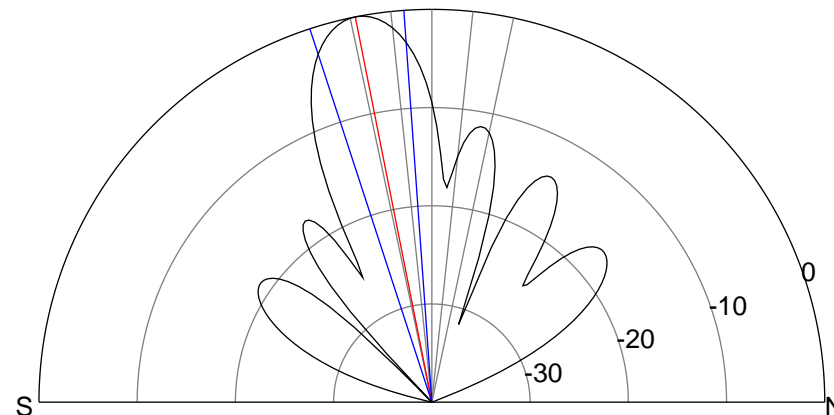
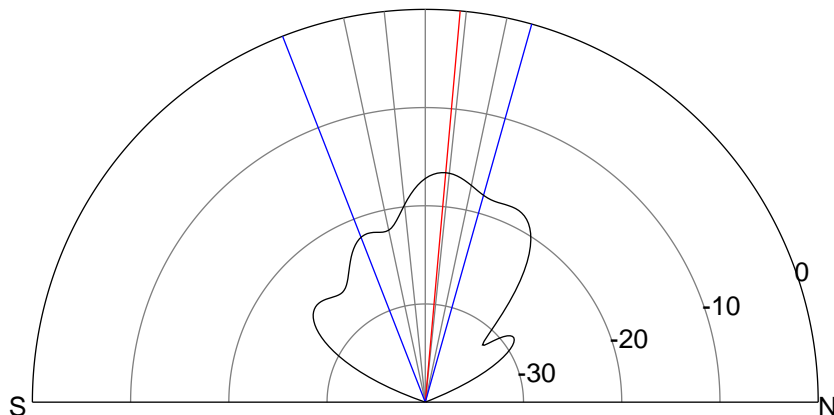
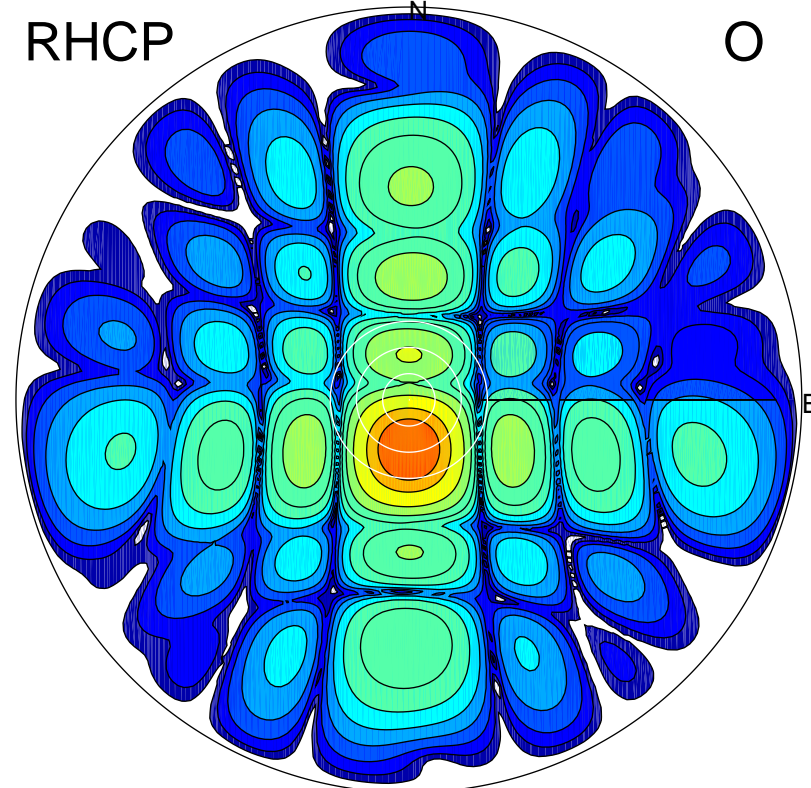
LHCP

X



RHCP

O



ERP 2.9 MW

Peak gain 5.4 dBi at Az 359 Zen 5
RHCP gain 5.3 dBi
N-S peak 5.4 dBi at Zen 5.1
N-S -3 dB beamwidth 37.0 deg.

ERP 129.1 MW

Peak gain 22.0 dBi at Az 181 Zen 11
LHCP gain -0.1 dBi
N-S peak 22.0 dBi at Zen -11.2
N-S -3 dB beamwidth 14.0 deg.