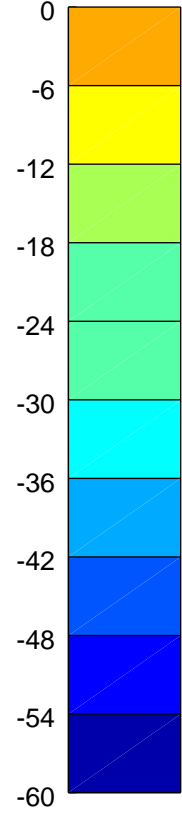
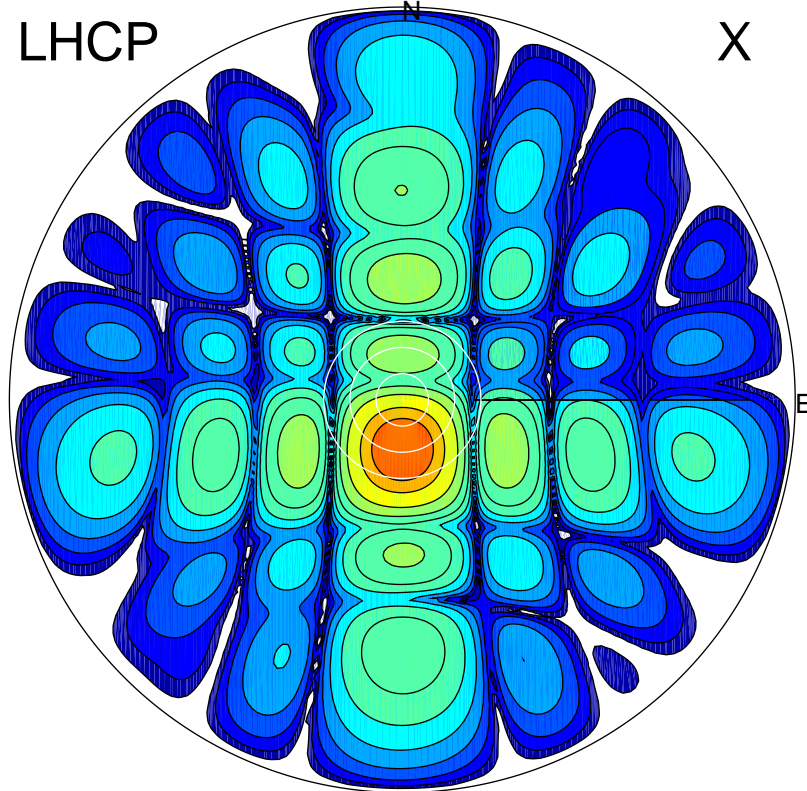


2018-04-19 11:57:02 A2 4.00000000 MHz 775.0 kW

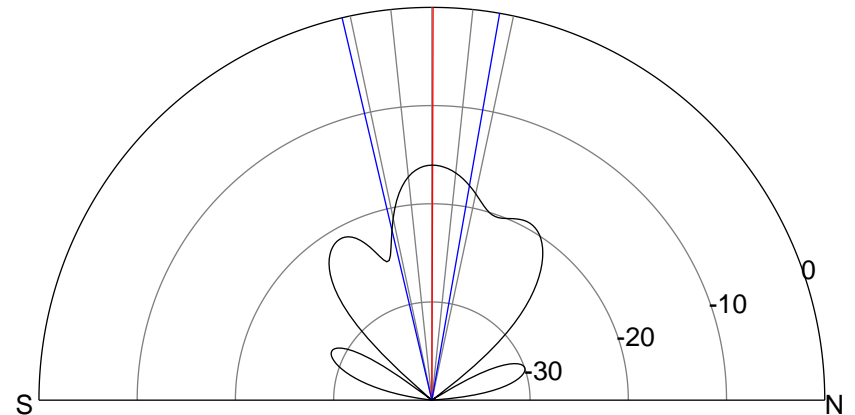
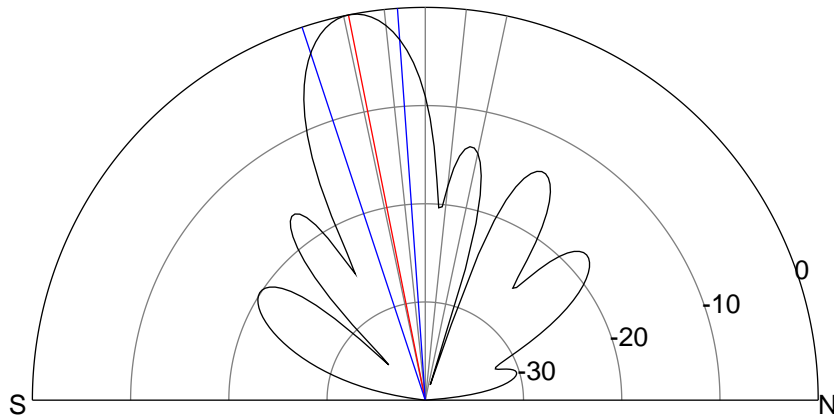
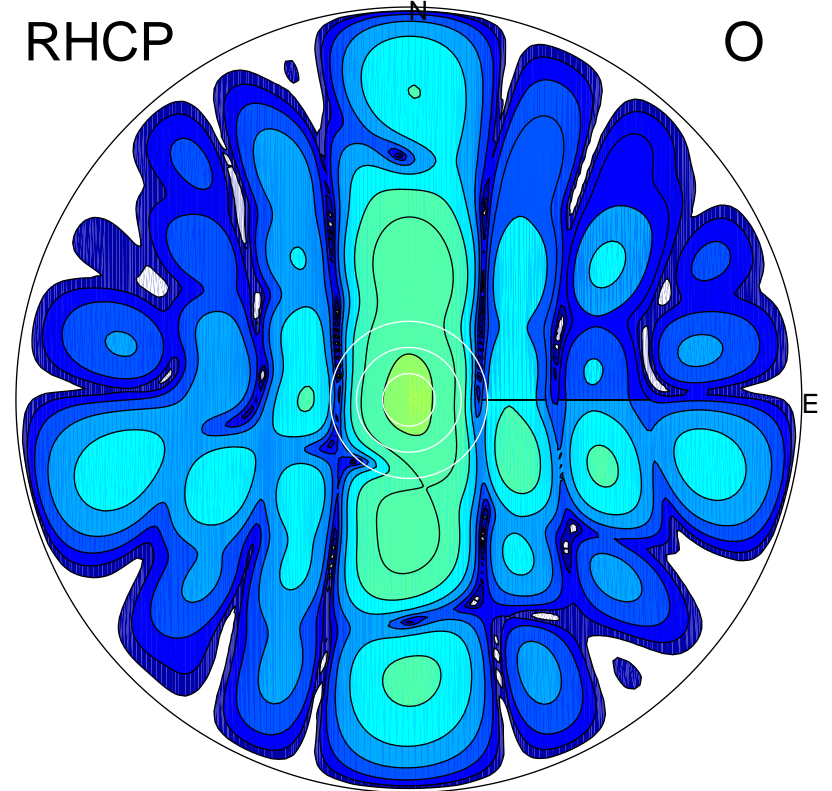
LHCP

X



RHCP

O



ERP 122.4 MW

Peak gain 22.0 dBi at Az 181 Zen 11
RHCP gain 1.7 dBi
N-S peak 22.0 dBi at Zen -11.3
N-S -3 dB beamwidth 14.2 deg.

ERP 3.0 MW

Peak gain 5.9 dBi at Az 21 Zen 0
LHCP gain 12.9 dBi
N-S peak 5.9 dBi at Zen 0.2
N-S -3 dB beamwidth 23.1 deg.