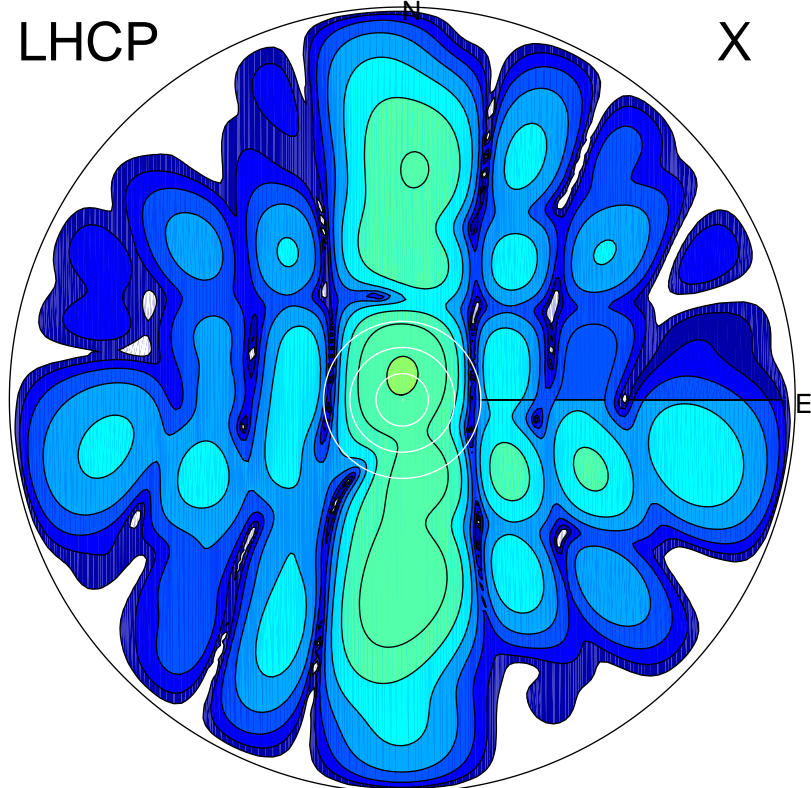


2018-04-19 10:21:00 A2 4.00000000 MHz 782.0 kW

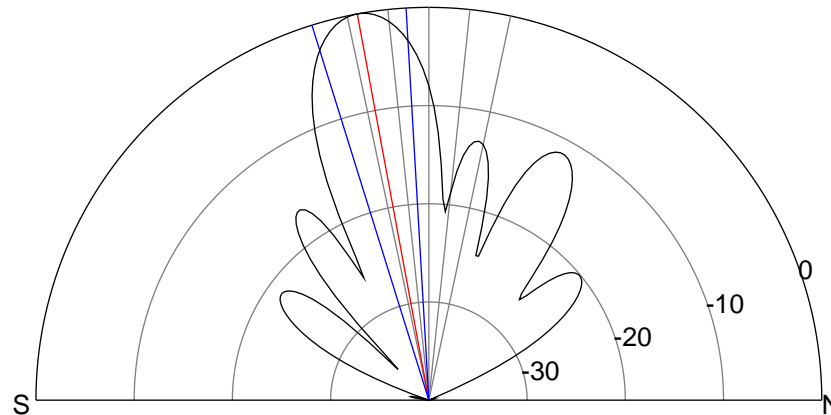
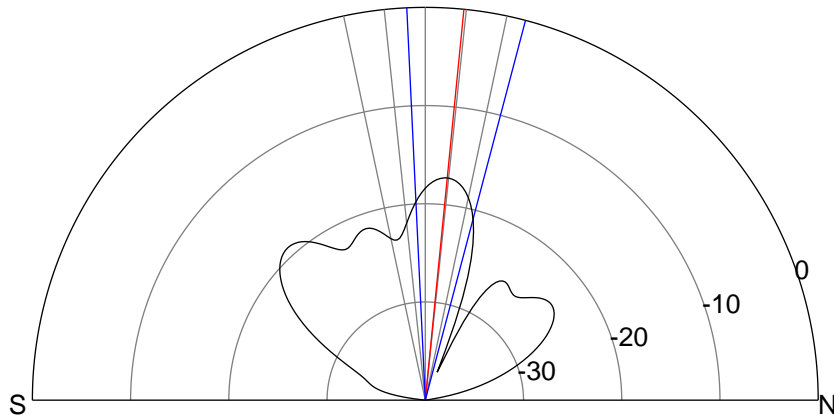
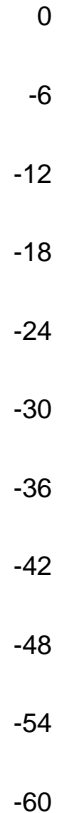
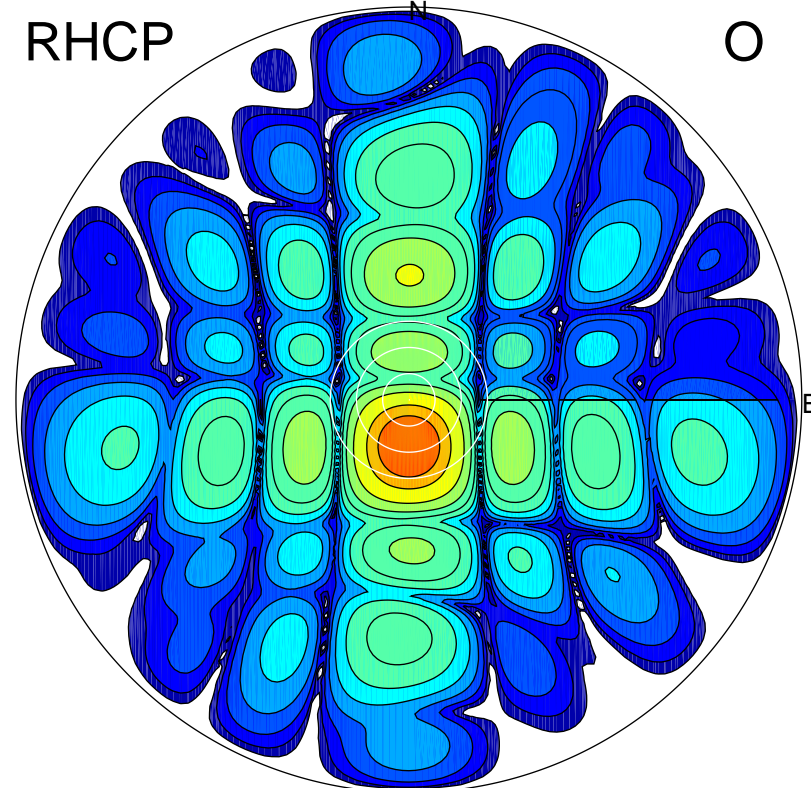
LHCP

X



RHCP

O



ERP 2.3 MW

Peak gain 4.7 dBi at Az 0 Zen 6
RHCP gain 3.3 dBi
N-S peak 4.7 dBi at Zen 5.6
N-S -3 dB beamwidth 17.5 deg.

ERP 123.9 MW

Peak gain 22.0 dBi at Az 181 Zen 11
LHCP gain -1.5 dBi
N-S peak 22.0 dBi at Zen -10.5
N-S -3 dB beamwidth 14.0 deg.