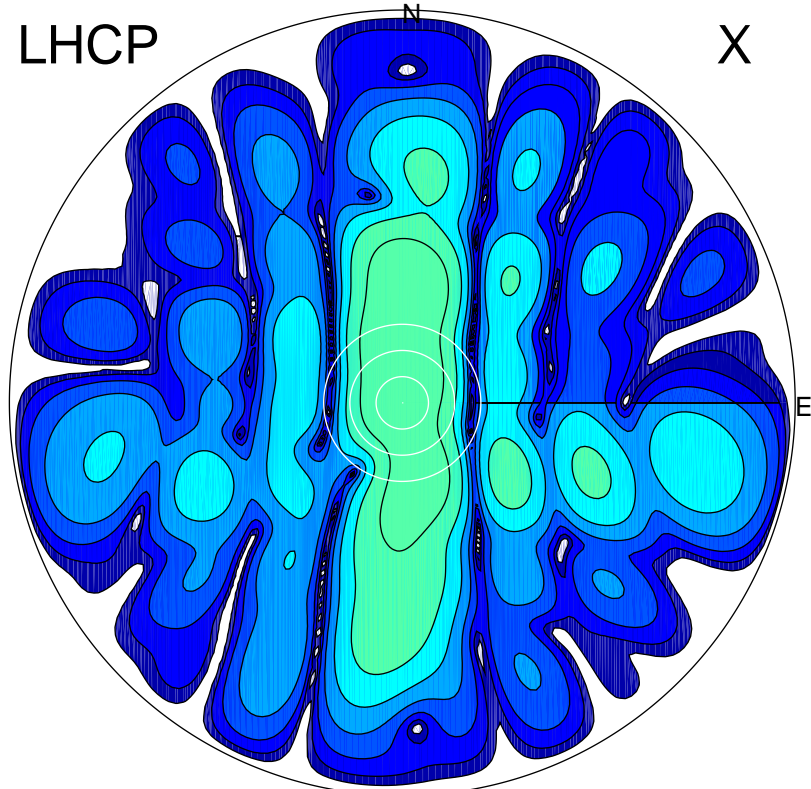


2018-04-19 10:00:05 A2 4.00000000 MHz 808.0 kW

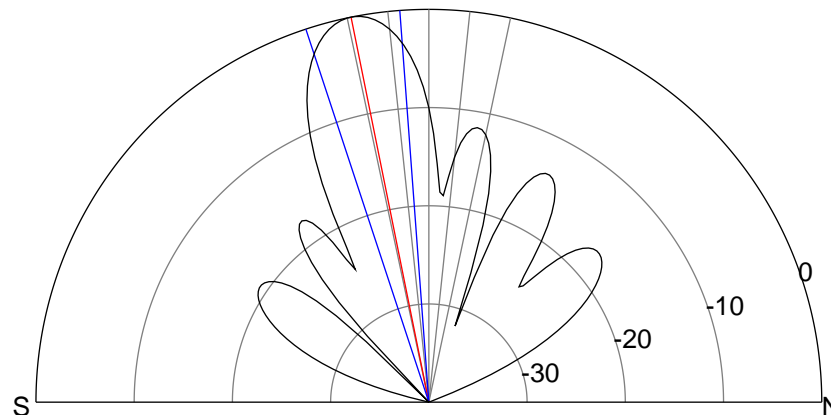
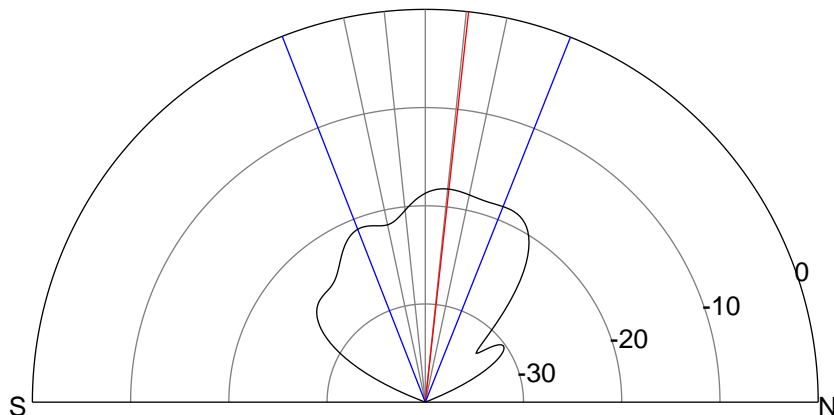
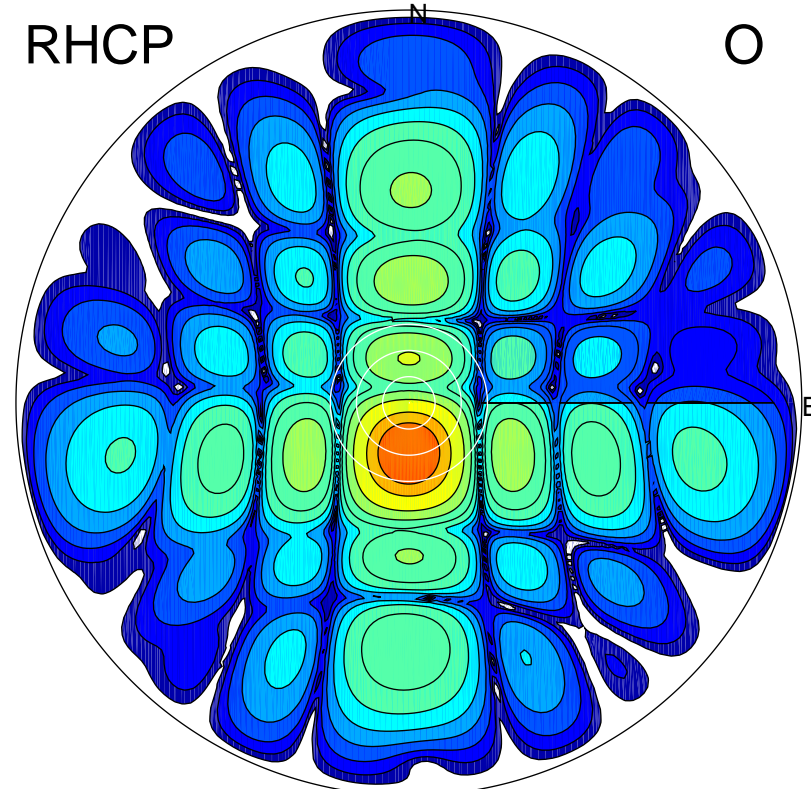
LHCP

X



RHCP

O



ERP 1.9 MW

Peak gain 3.8 dBi at Az 359 Zen 6
RHCP gain 7.1 dBi
N-S peak 3.8 dBi at Zen 6.3
N-S -3 dB beamwidth 43.0 deg.

ERP 128.0 MW

Peak gain 22.0 dBi at Az 181 Zen 11
LHCP gain 0.4 dBi
N-S peak 22.0 dBi at Zen -11.4
N-S -3 dB beamwidth 14.0 deg.