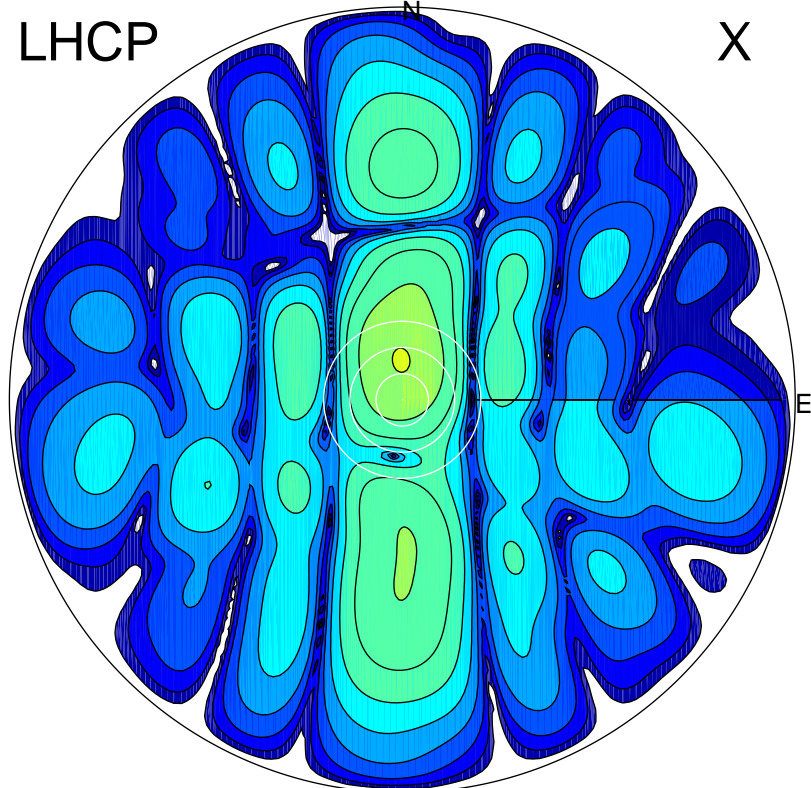


2018-04-17 12:15:05 A2 4.00000000 MHz 728.0 kW

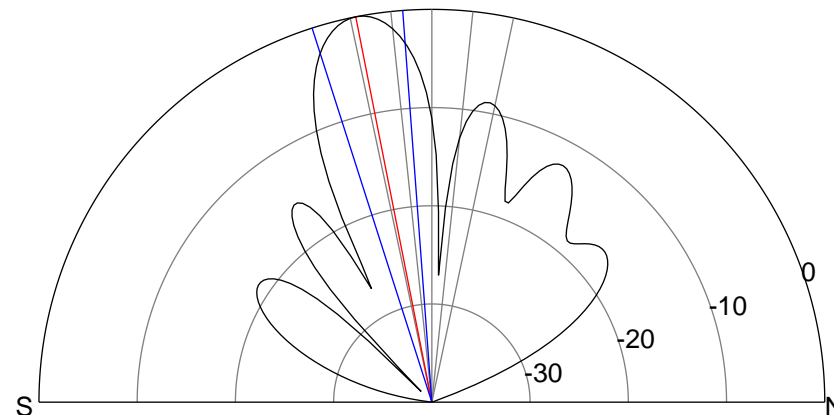
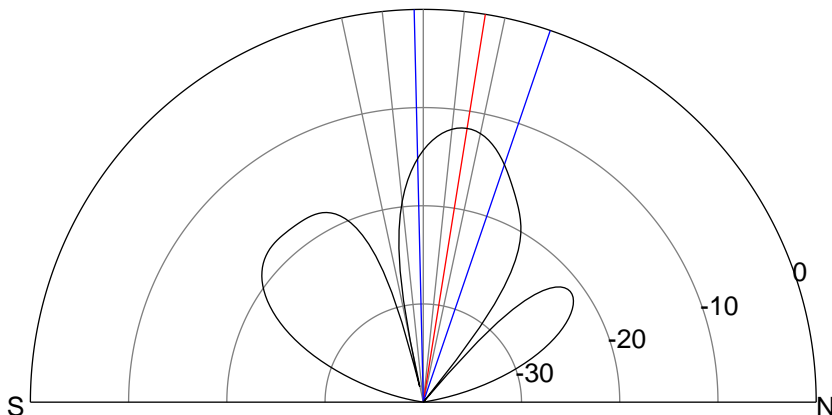
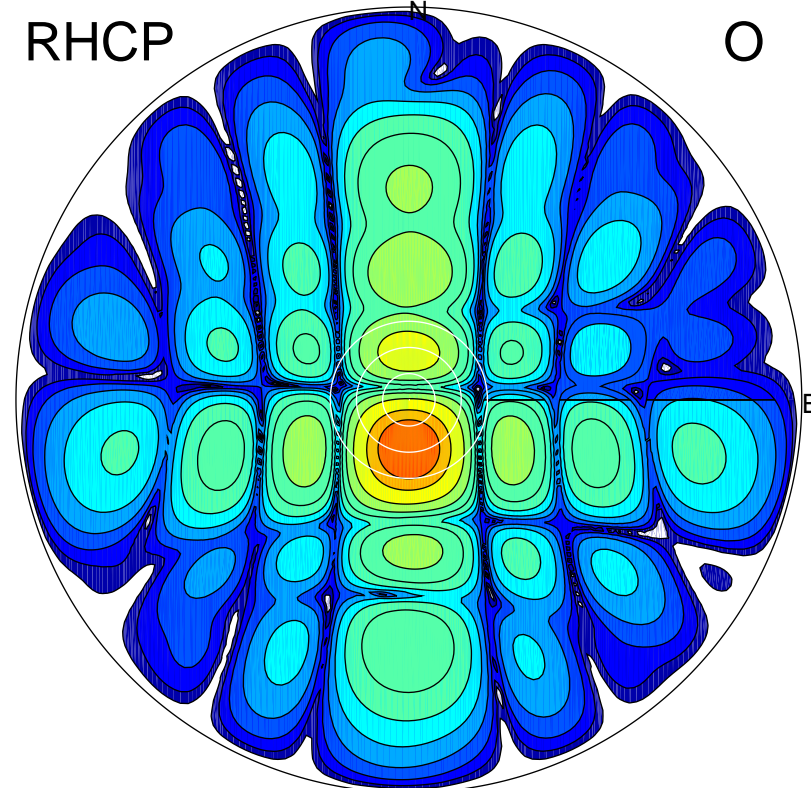
LHCP

X



RHCP

O



### ERP 7.0 MW

Peak gain 9.8 dBi at Az 358 Zen 9  
RHCP gain 12.2 dBi  
N-S peak 9.8 dBi at Zen 9.1  
N-S -3 dB beamwidth 20.2 deg.

### ERP 104.5 MW

Peak gain 21.6 dBi at Az 181 Zen 11  
LHCP gain -8.0 dBi  
N-S peak 21.6 dBi at Zen -11.2  
N-S -3 dB beamwidth 13.5 deg.