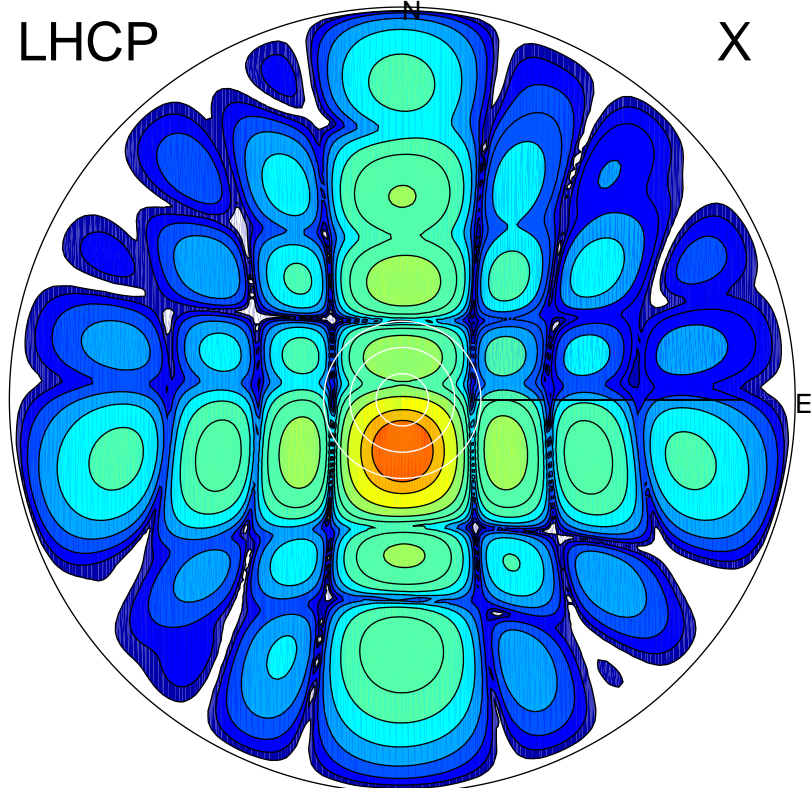


2018-04-16 10:25:02 A2 4.04000000 MHz 801.0 kW

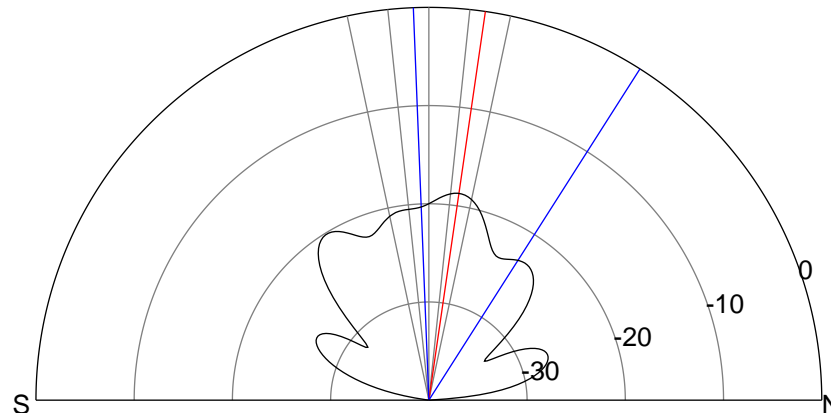
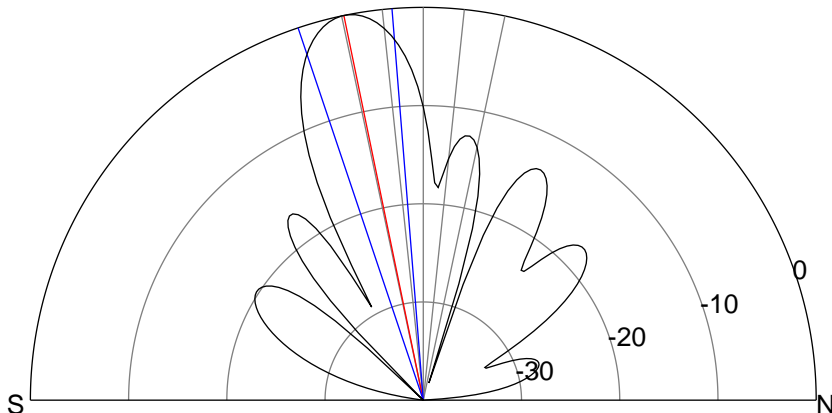
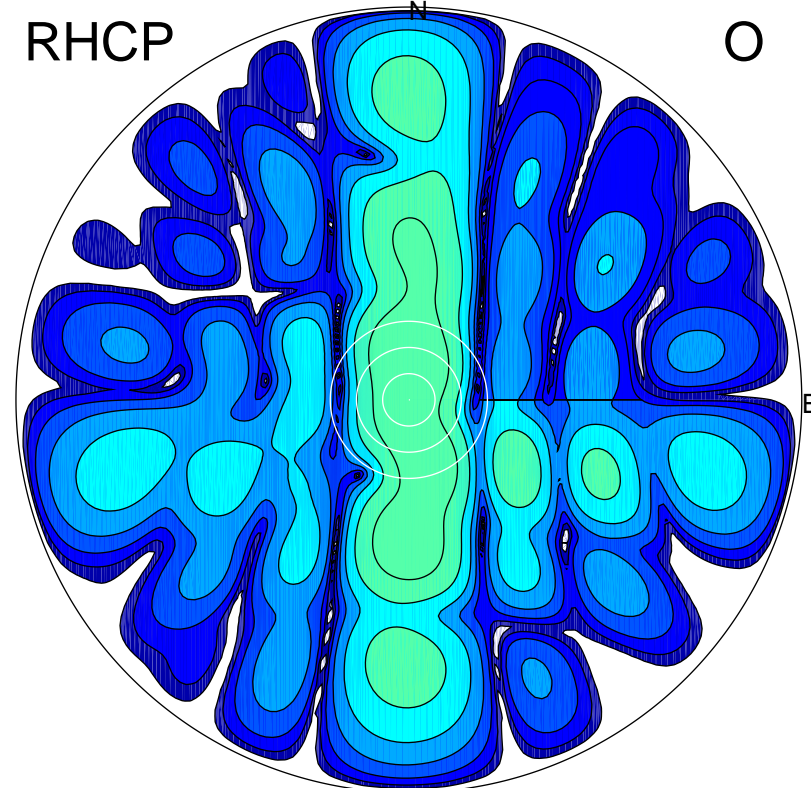
LHCP

X



RHCP

O



ERP 130.0 MW

Peak gain 22.1 dBi at Az 180 Zen 12
RHCP gain 1.3 dBi
N-S peak 22.1 dBi at Zen -11.7
N-S -3 dB beamwidth 14.0 deg.

ERP 1.7 MW

Peak gain 3.4 dBi at Az 0 Zen 8
LHCP gain 8.9 dBi
N-S peak 3.4 dBi at Zen 8.3
N-S -3 dB beamwidth 34.8 deg.