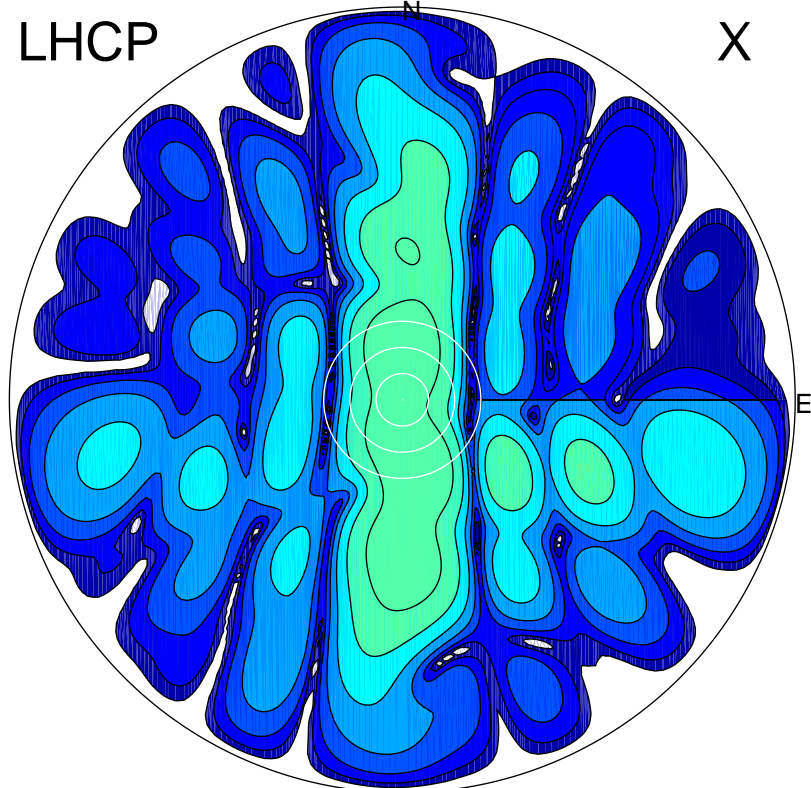


2018-04-16 10:20:52 A2 4.04000000 MHz 792.0 kW

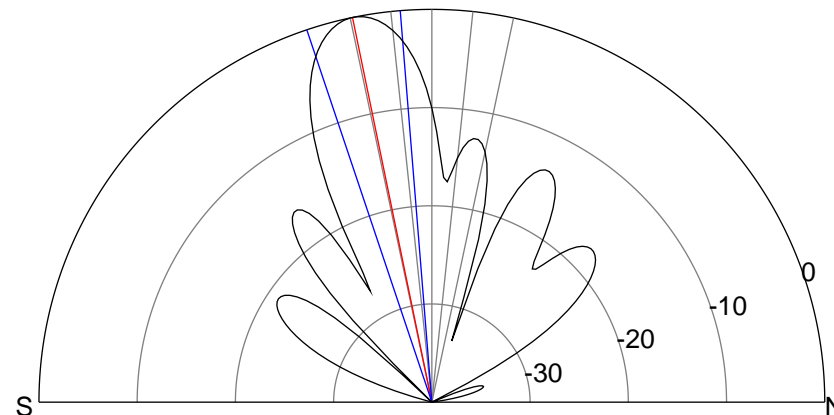
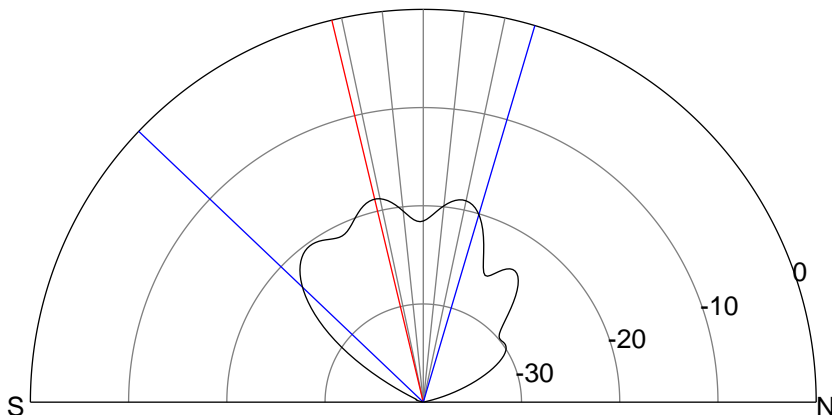
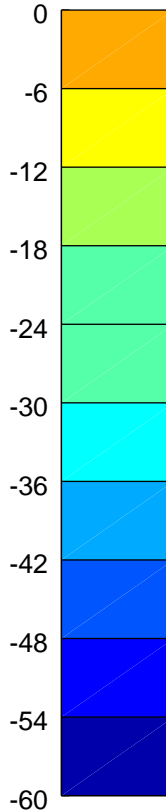
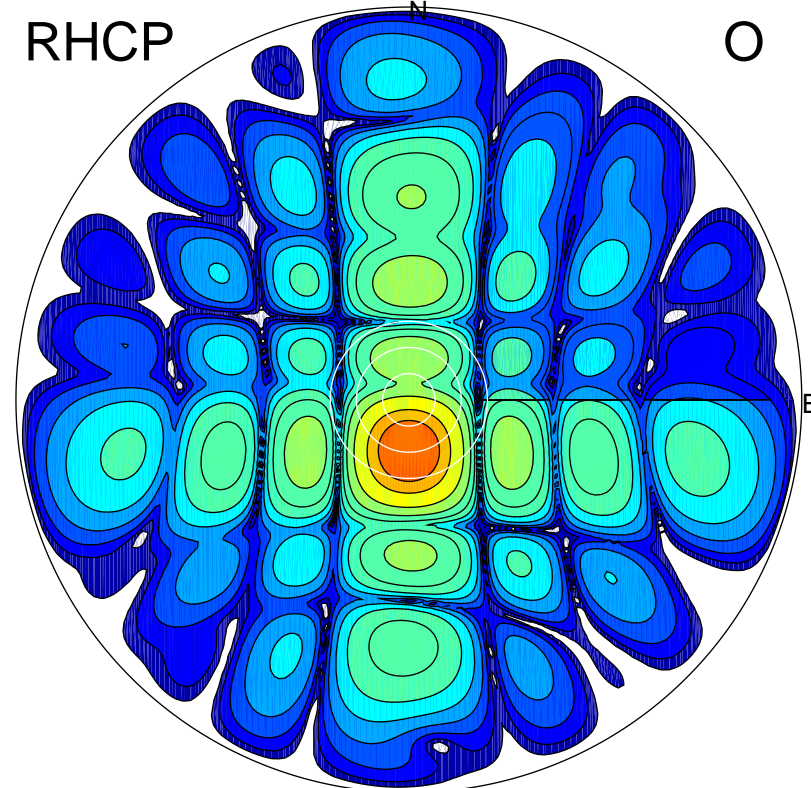
LHCP

X



RHCP

O



ERP 2.0 MW

Peak gain 4.0 dBi at Az 167 Zen 16
RHCP gain 20.5 dBi
N-S peak 3.4 dBi at Zen -13.5
N-S -3 dB beamwidth 62.9 deg.

ERP 128.8 MW

Peak gain 22.1 dBi at Az 180 Zen 12
LHCP gain 3.3 dBi
N-S peak 22.1 dBi at Zen -11.7
N-S -3 dB beamwidth 13.9 deg.