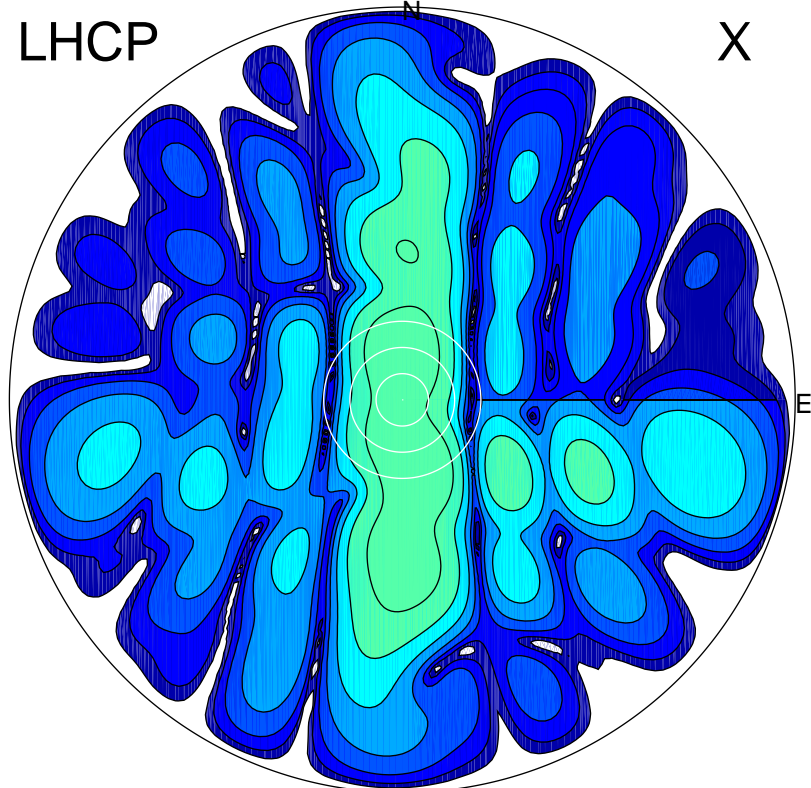


2018-04-16 10:19:02 A2 4.04000000 MHz 799.0 kW

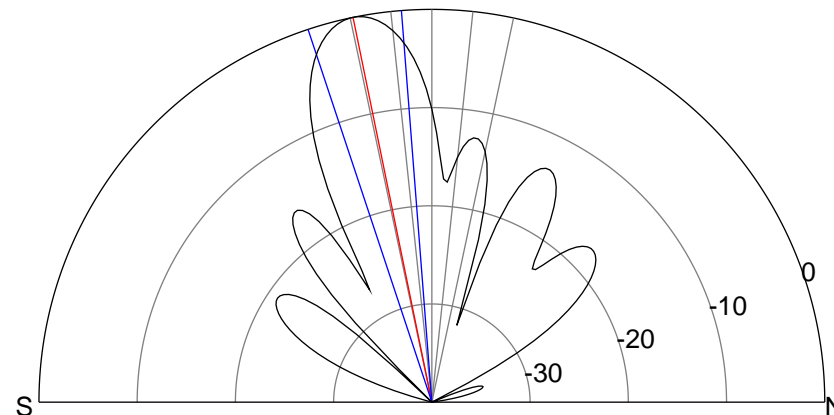
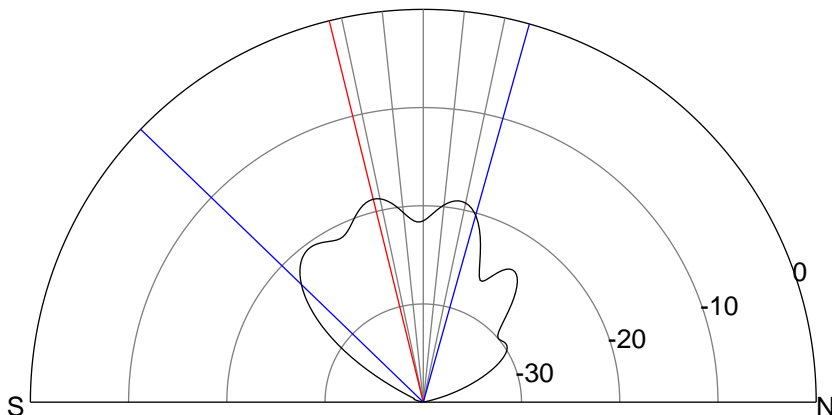
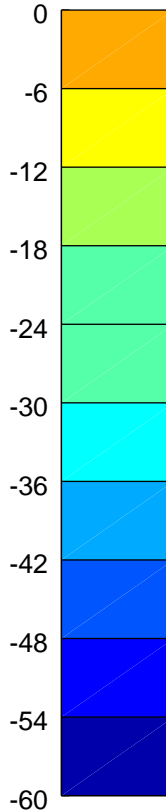
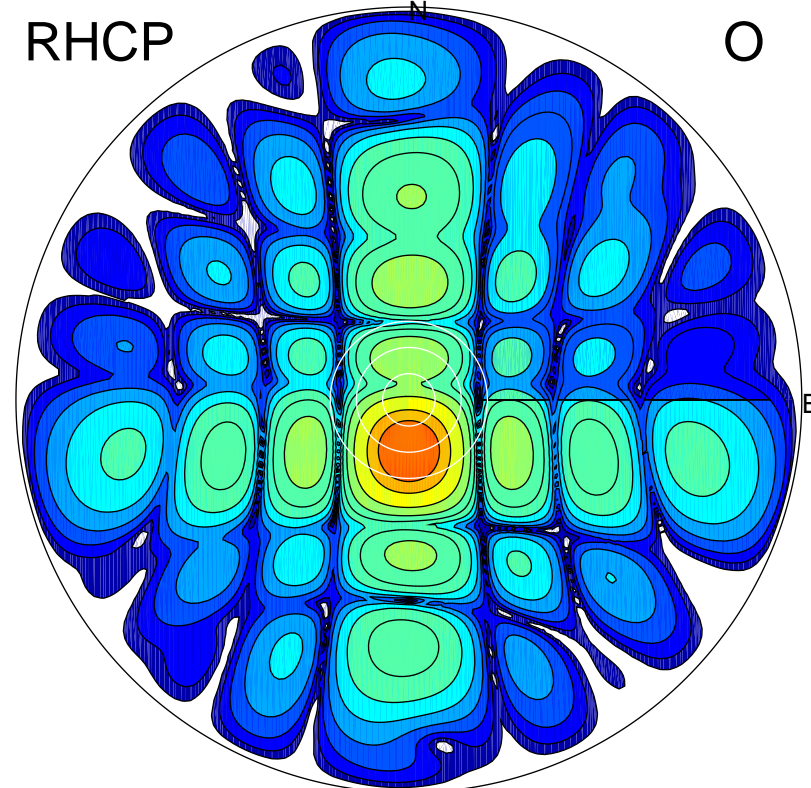
LHCP

X



RHCP

O



ERP 2.1 MW

Peak gain 4.1 dBi at Az 168 Zen 16
RHCP gain 20.6 dBi
N-S peak 3.4 dBi at Zen -13.8
N-S -3 dB beamwidth 61.7 deg.

ERP 130.0 MW

Peak gain 22.1 dBi at Az 181 Zen 12
LHCP gain 3.2 dBi
N-S peak 22.1 dBi at Zen -11.6
N-S -3 dB beamwidth 13.9 deg.