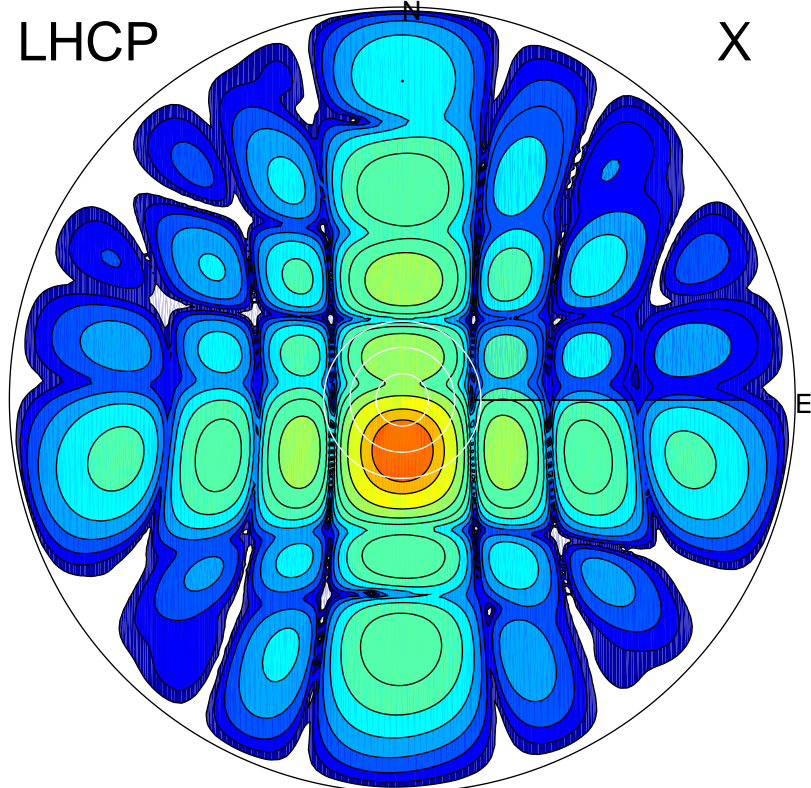


2018-04-13 15:04:06 A2 4.04000000 MHz 770.0 kW

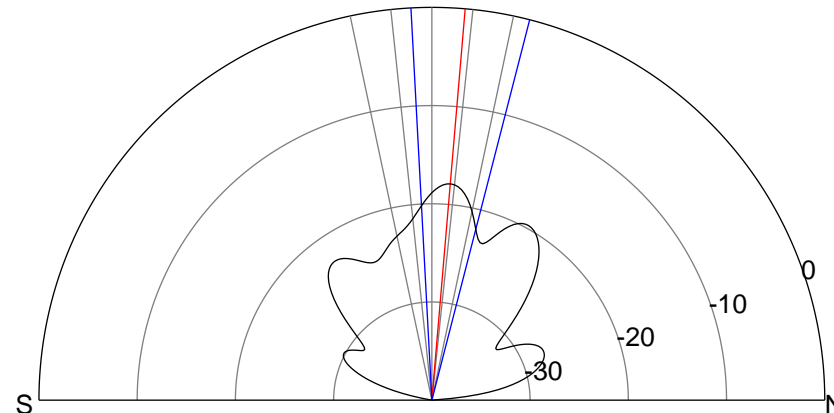
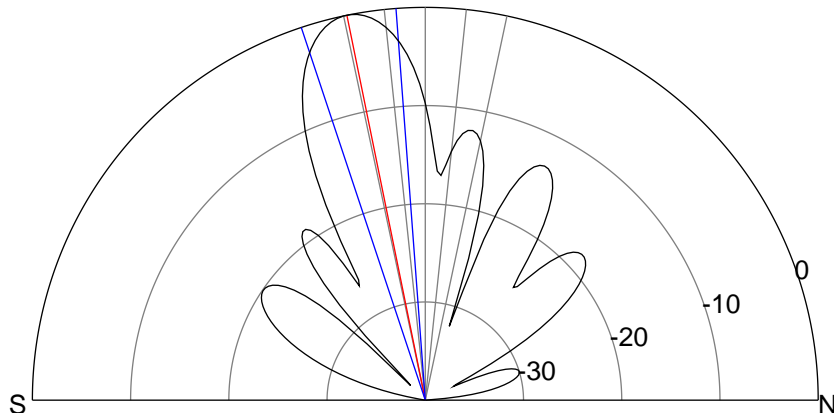
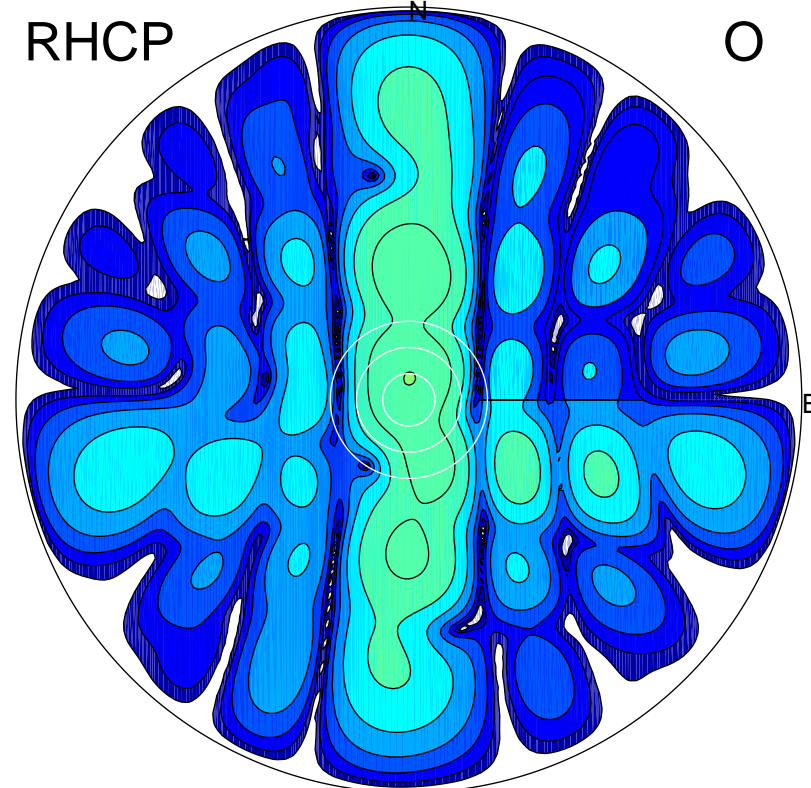
LHCP

X



RHCP

O



ERP 123.9 MW

Peak gain 22.1 dBi at Az 181 Zen 12
RHCP gain -1.0 dBi
N-S peak 22.1 dBi at Zen -11.5
N-S -3 dB beamwidth 14.1 deg.

ERP 2.0 MW

Peak gain 4.2 dBi at Az 3 Zen 5
LHCP gain 6.1 dBi
N-S peak 4.2 dBi at Zen 4.9
N-S -3 dB beamwidth 17.5 deg.