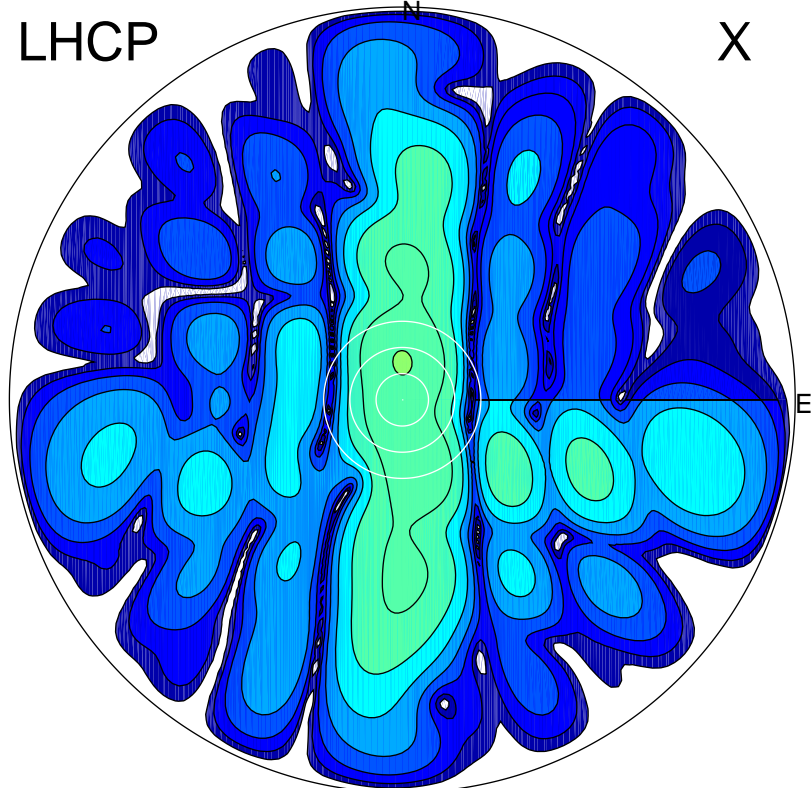


2018-04-13 15:04:03 A2 4.04000000 MHz 795.0 kW

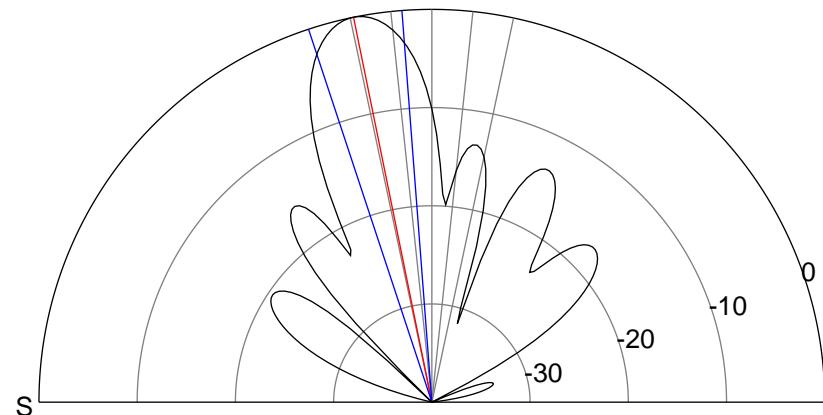
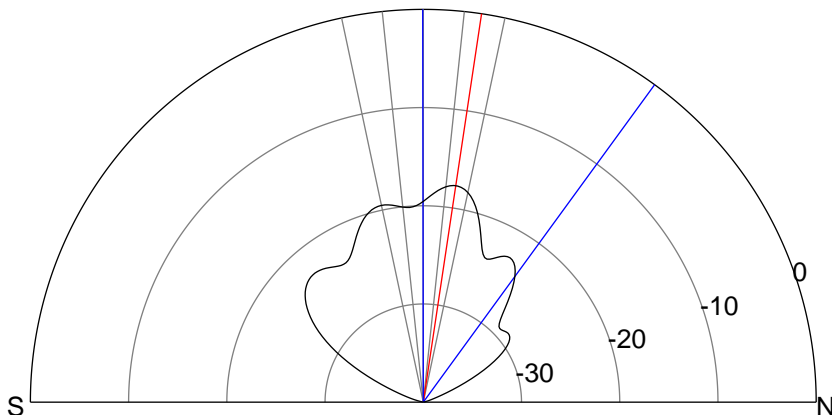
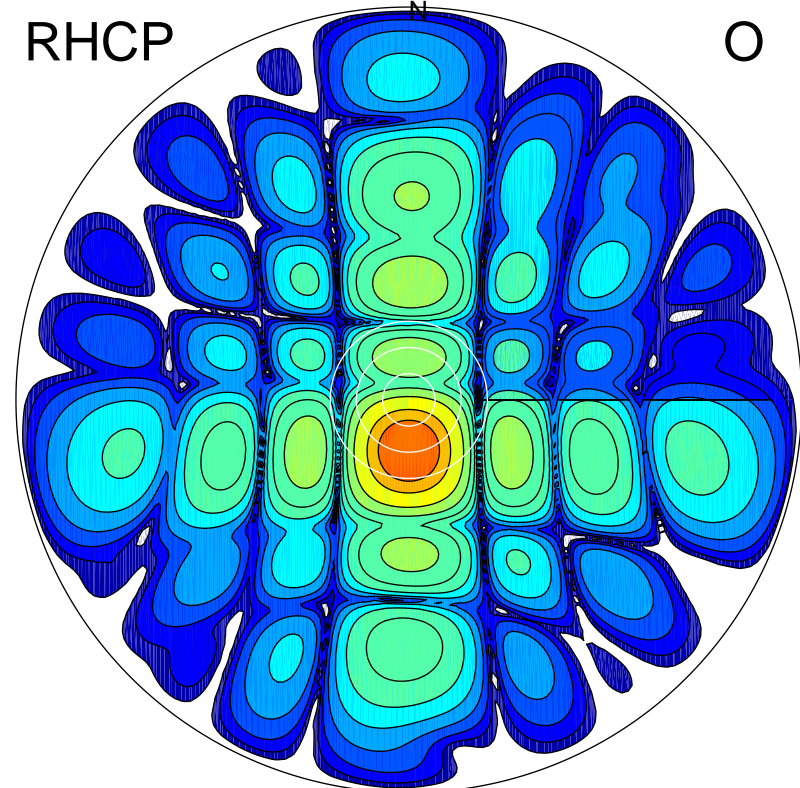
LHCP

X



RHCP

O



### ERP 2.2 MW

Peak gain 4.4 dBi at Az 359 Zen 9  
RHCP gain 8.6 dBi  
N-S peak 4.4 dBi at Zen 8.5  
N-S -3 dB beamwidth 36.2 deg.

### ERP 129.6 MW

Peak gain 22.1 dBi at Az 181 Zen 12  
LHCP gain 2.5 dBi  
N-S peak 22.1 dBi at Zen -11.5  
N-S -3 dB beamwidth 13.9 deg.