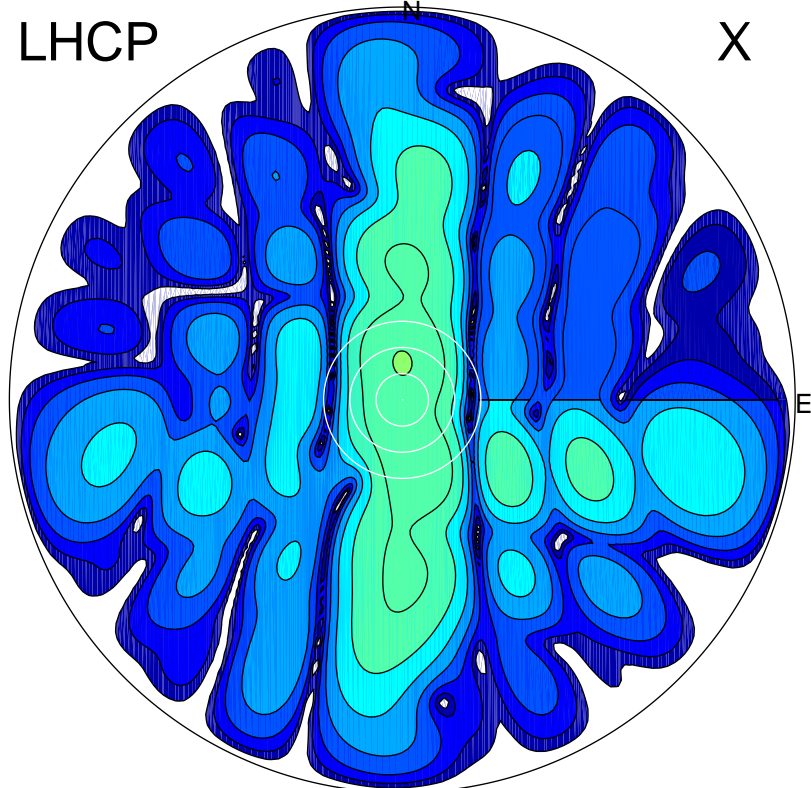


2018-04-13 15:04:00 A2 4.04000000 MHz 789.0 kW

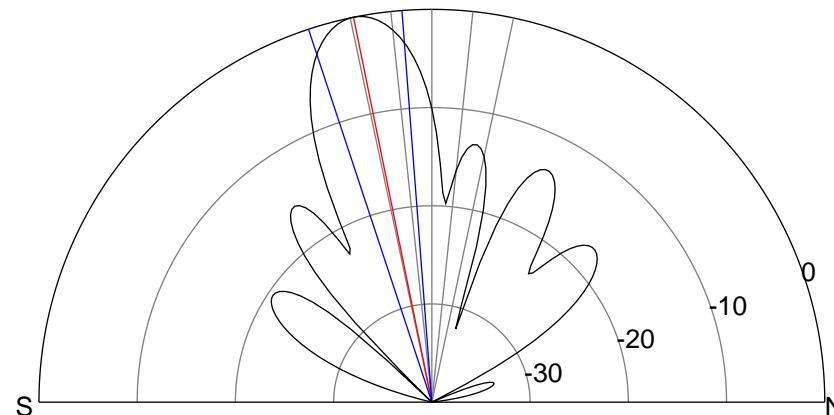
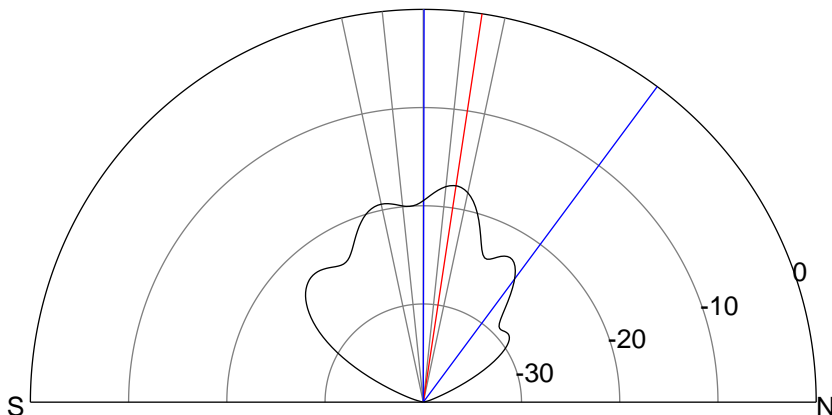
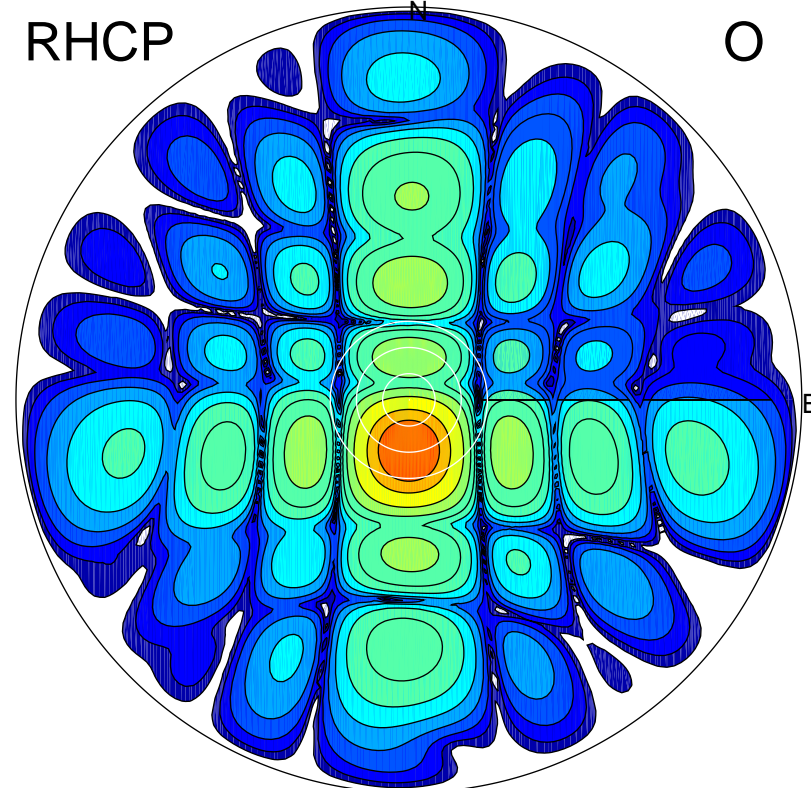
LHCP

X



RHCP

O



ERP 2.2 MW

Peak gain 4.4 dBi at Az 0 Zen 9
RHCP gain 8.7 dBi
N-S peak 4.4 dBi at Zen 8.6
N-S -3 dB beamwidth 36.4 deg.

ERP 128.5 MW

Peak gain 22.1 dBi at Az 181 Zen 12
LHCP gain 2.6 dBi
N-S peak 22.1 dBi at Zen -11.5
N-S -3 dB beamwidth 13.9 deg.