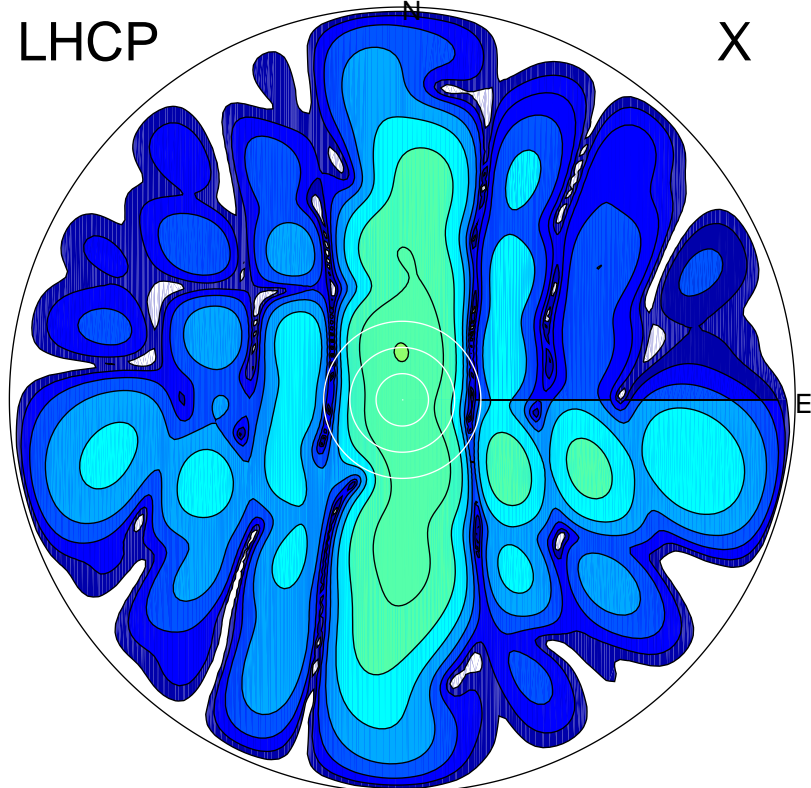


2018-04-13 14:13:28 A2 4.04000000 MHz 775.0 kW

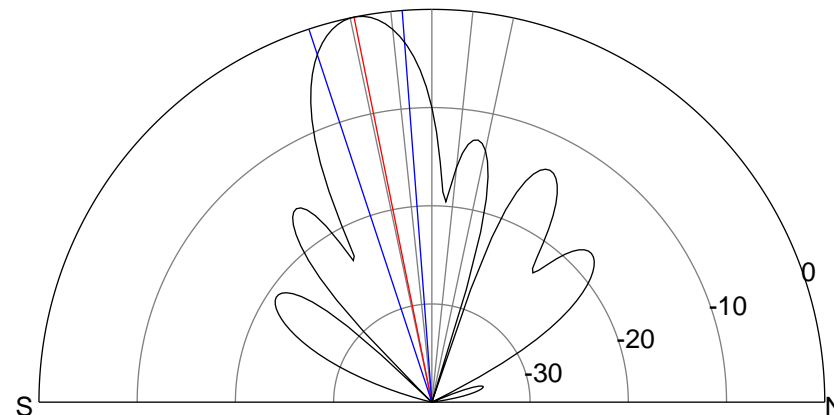
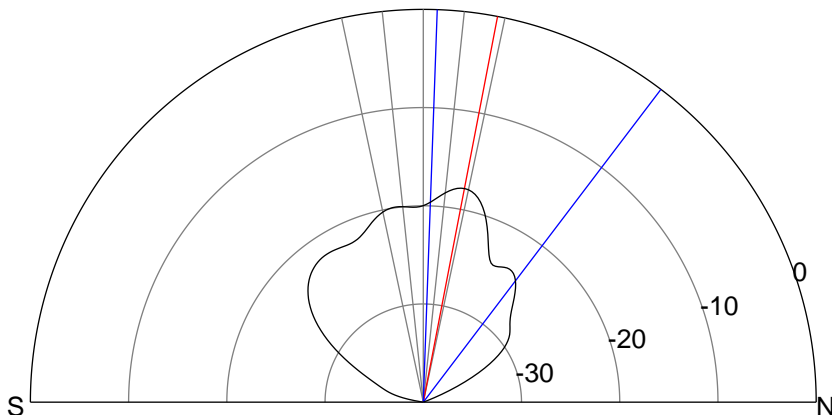
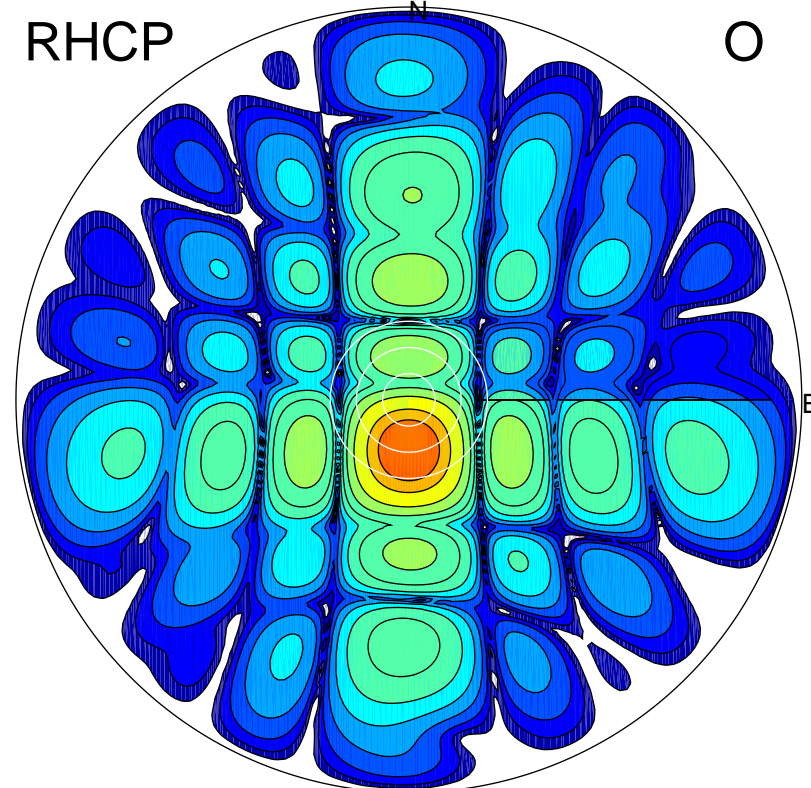
LHCP

X



RHCP

O



ERP 2.1 MW

Peak gain 4.3 dBi at Az 358 Zen 11
RHCP gain 9.0 dBi
N-S peak 4.3 dBi at Zen 10.9
N-S -3 dB beamwidth 35.2 deg.

ERP 126.5 MW

Peak gain 22.1 dBi at Az 181 Zen 11
LHCP gain 2.0 dBi
N-S peak 22.1 dBi at Zen -11.4
N-S -3 dB beamwidth 13.9 deg.