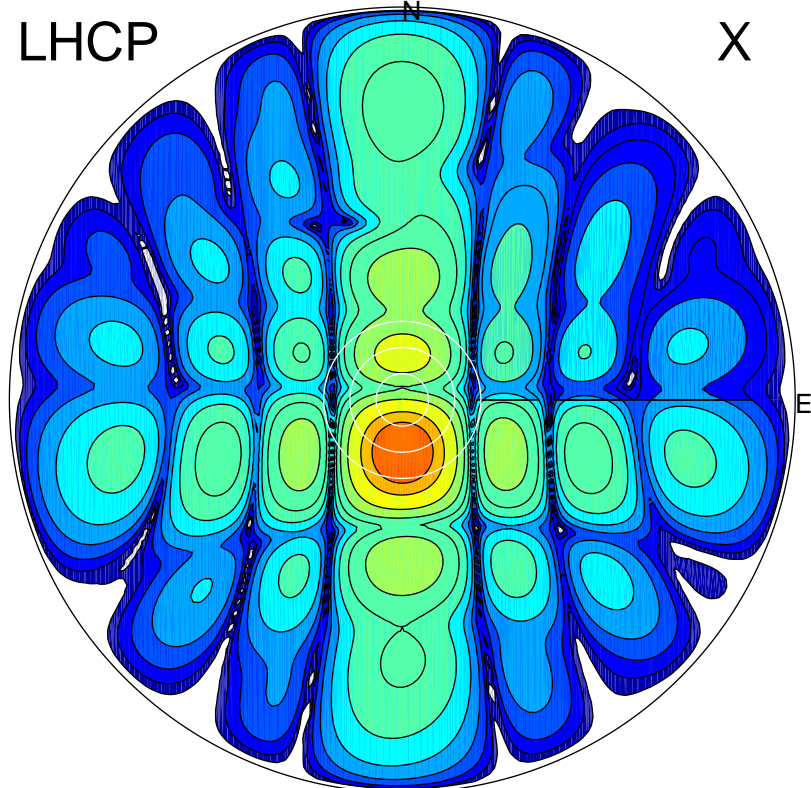


2018-04-07 15:50:06 A2 4.04000000 MHz 589.0 kW

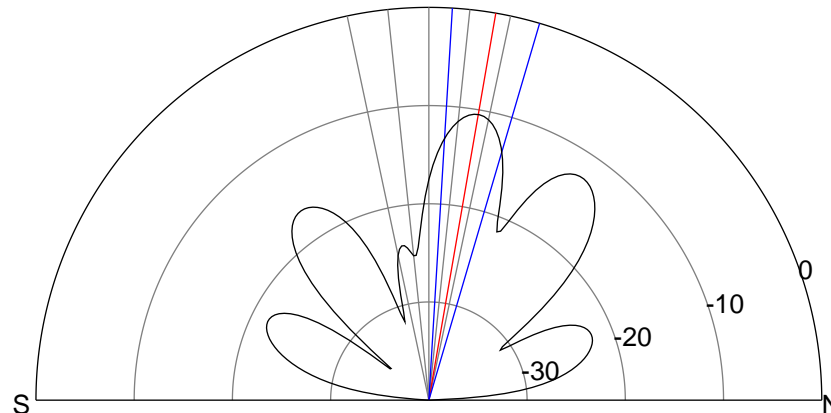
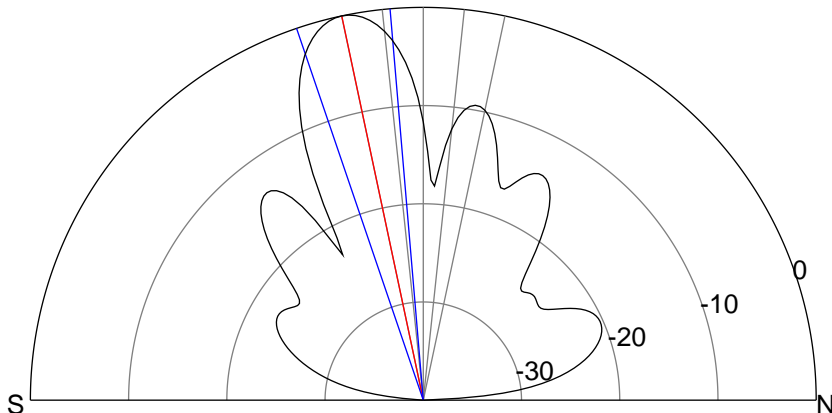
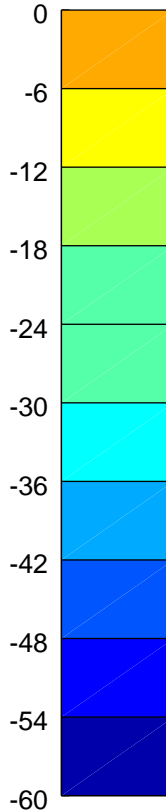
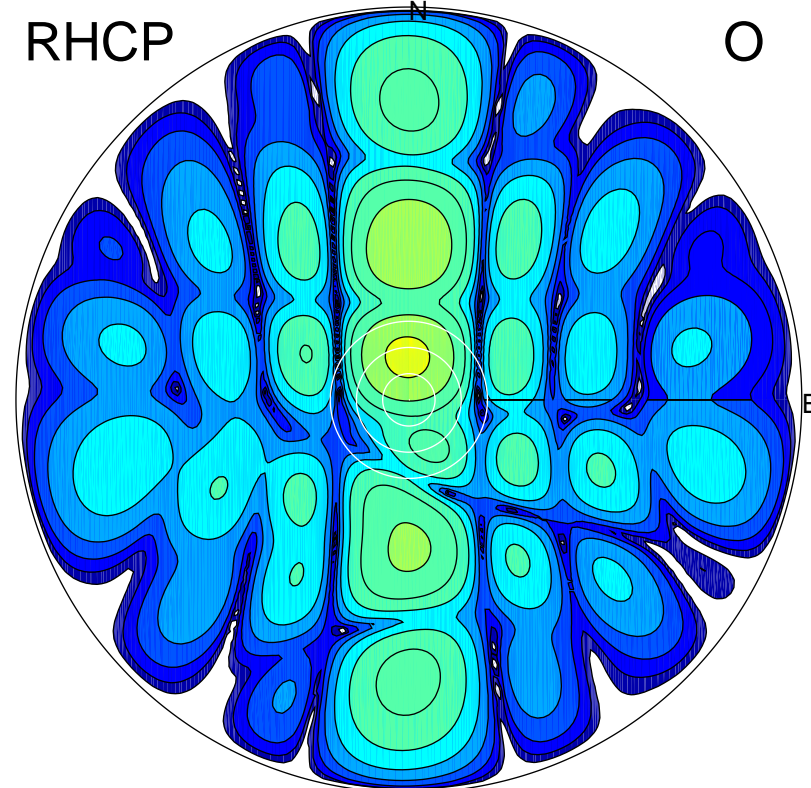
LHCP

X



RHCP

O



ERP 81.6 MW

Peak gain 21.4 dBi at Az 181 Zen 12
RHCP gain -3.7 dBi
N-S peak 21.4 dBi at Zen -12.0
N-S -3 dB beamwidth 14.0 deg.

ERP 7.3 MW

Peak gain 10.9 dBi at Az 358 Zen 10
LHCP gain 11.9 dBi
N-S peak 10.9 dBi at Zen 9.8
N-S -3 dB beamwidth 12.9 deg.