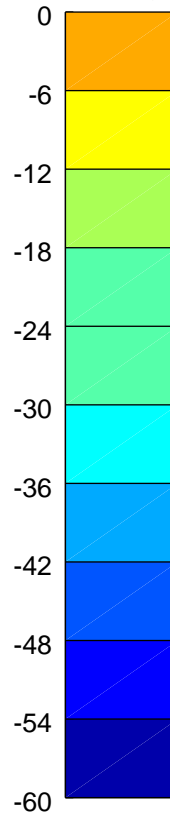
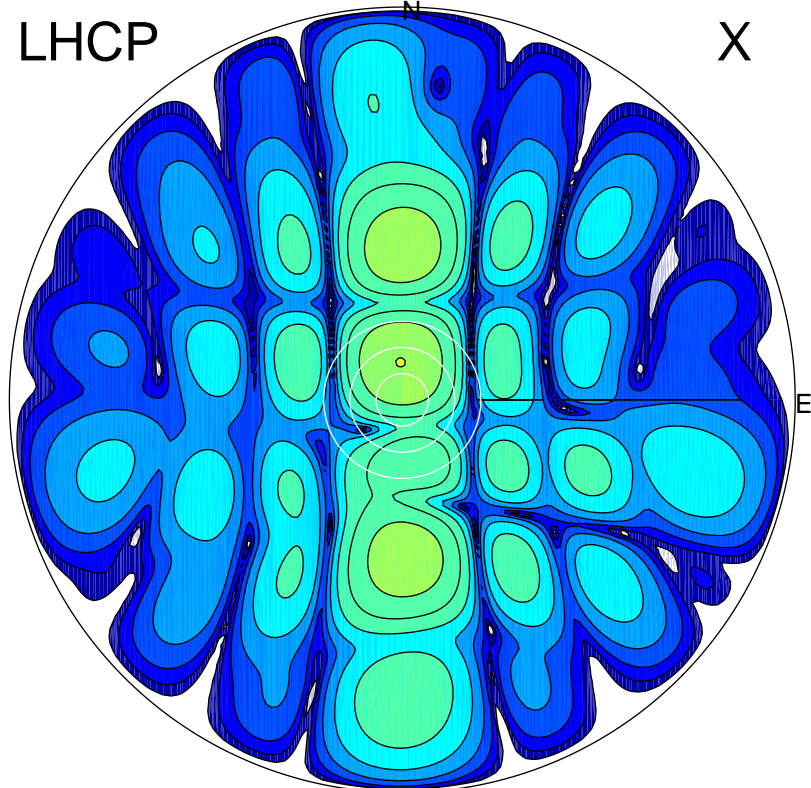


2018-04-07 15:50:03 A2 4.04000000 MHz 624.0 kW

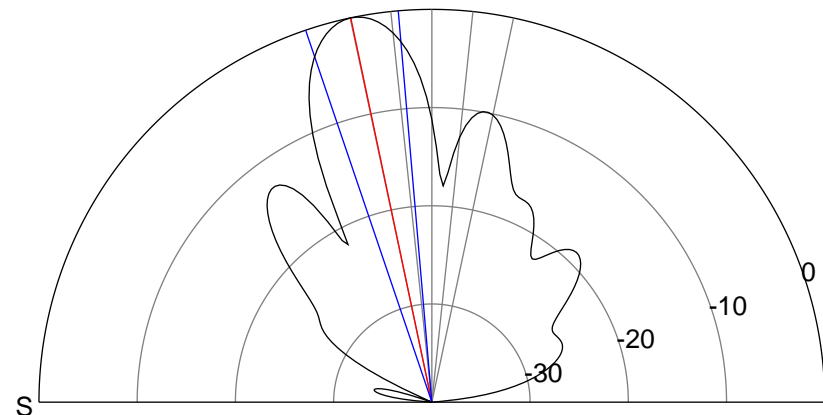
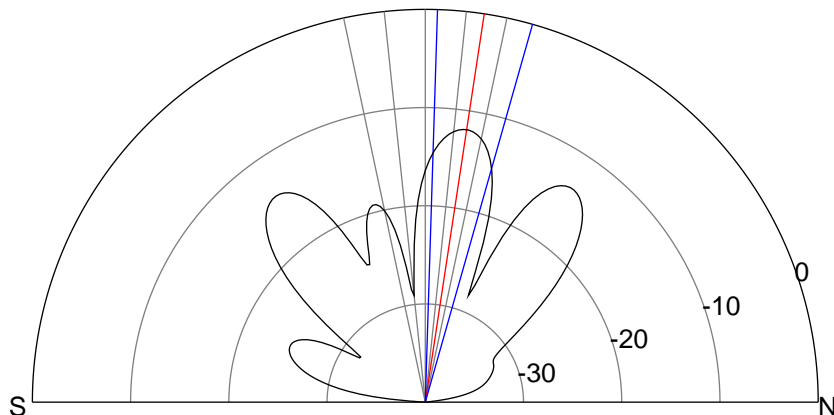
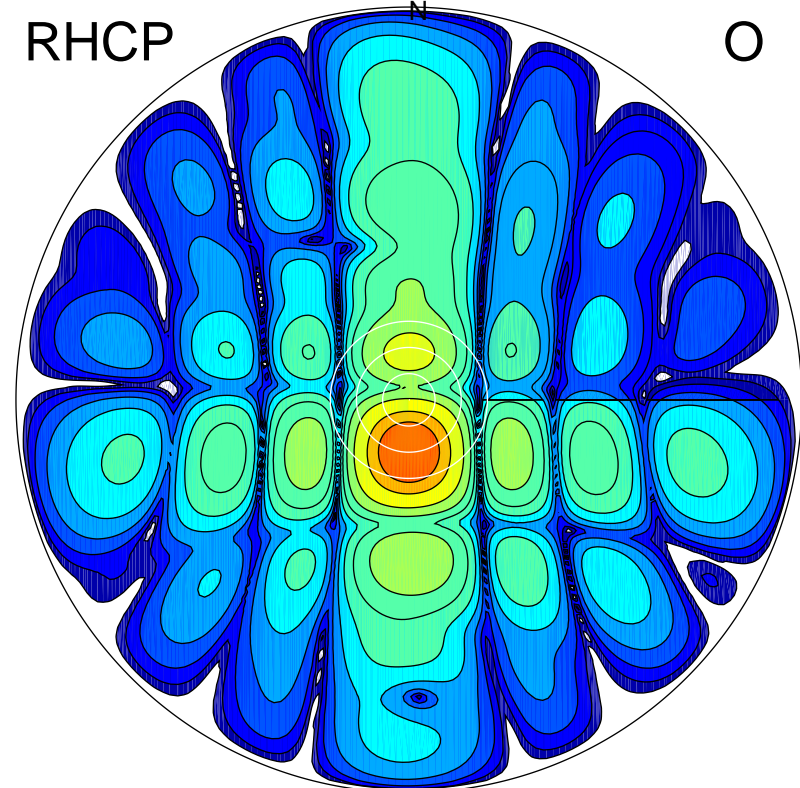
LHCP

X



RHCP

O



### ERP 5.7 MW

Peak gain 9.6 dBi at Az 357 Zen 9  
RHCP gain 11.3 dBi  
N-S peak 9.6 dBi at Zen 8.6  
N-S -3 dB beamwidth 14.1 deg.

### ERP 89.7 MW

Peak gain 21.6 dBi at Az 180 Zen 12  
LHCP gain 1.5 dBi  
N-S peak 21.6 dBi at Zen -11.9  
N-S -3 dB beamwidth 13.8 deg.