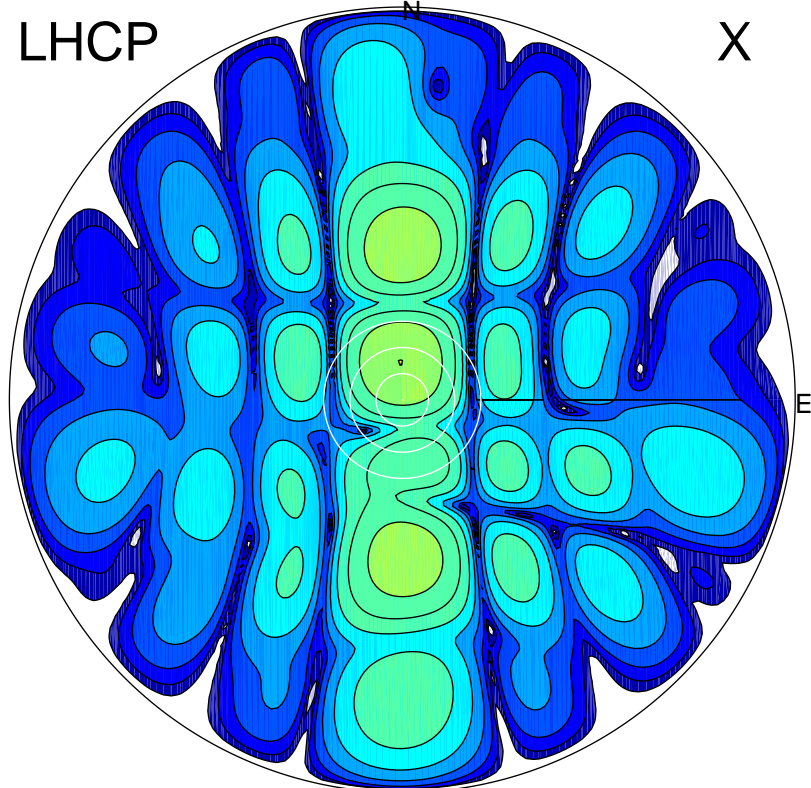


2018-04-07 15:50:00 A2 4.04000000 MHz 617.0 kW

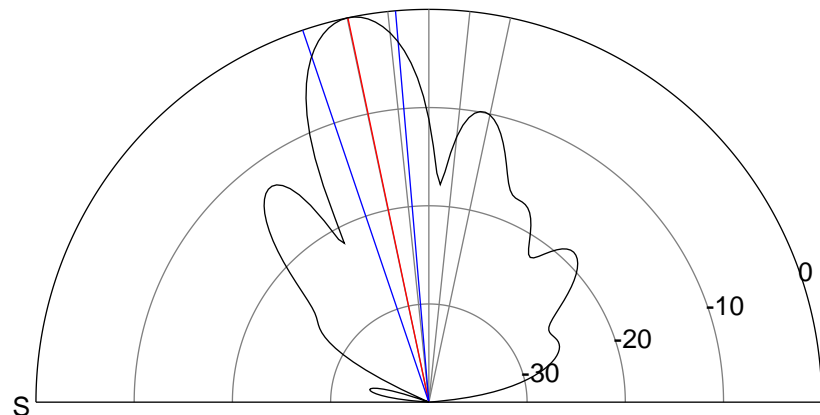
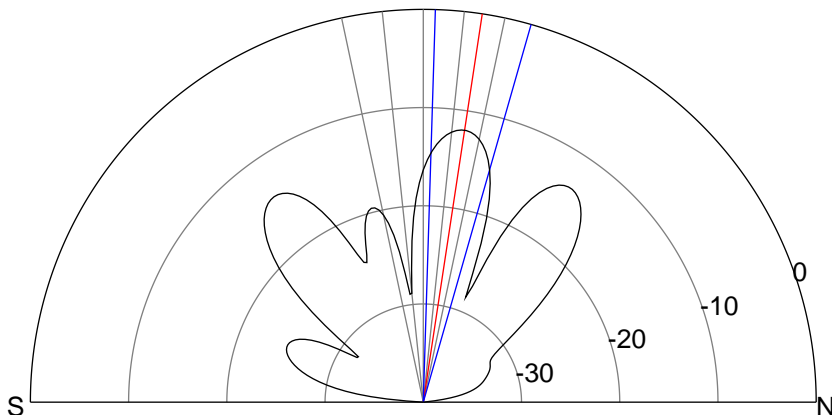
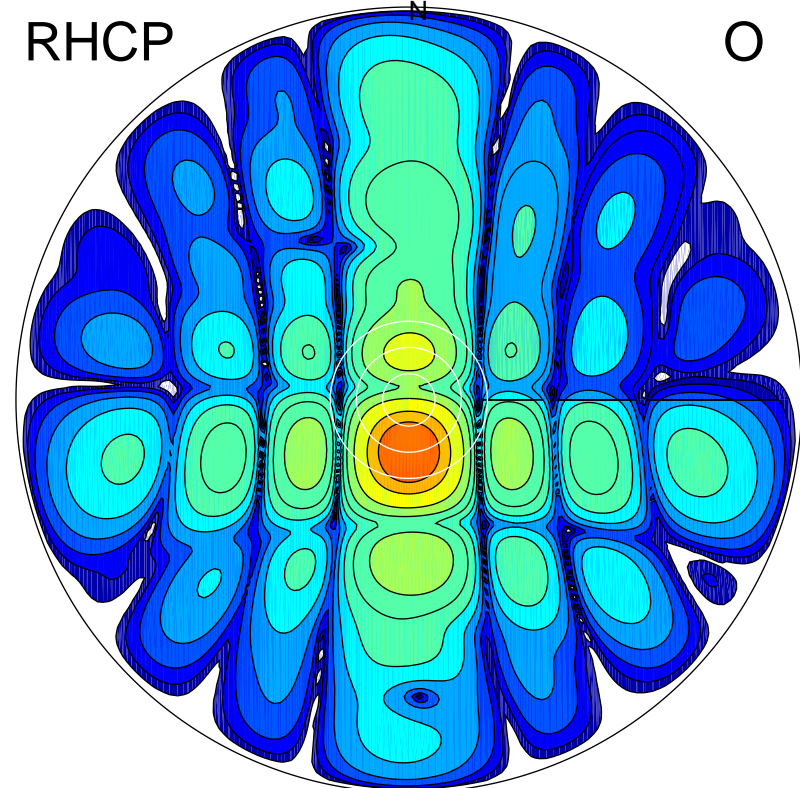
LHCP

X



RHCP

O



ERP 5.6 MW

Peak gain 9.6 dBi at Az 358 Zen 9
RHCP gain 11.4 dBi
N-S peak 9.6 dBi at Zen 8.6
N-S -3 dB beamwidth 14.2 deg.

ERP 88.6 MW

Peak gain 21.6 dBi at Az 181 Zen 12
LHCP gain 1.0 dBi
N-S peak 21.6 dBi at Zen -11.9
N-S -3 dB beamwidth 13.9 deg.