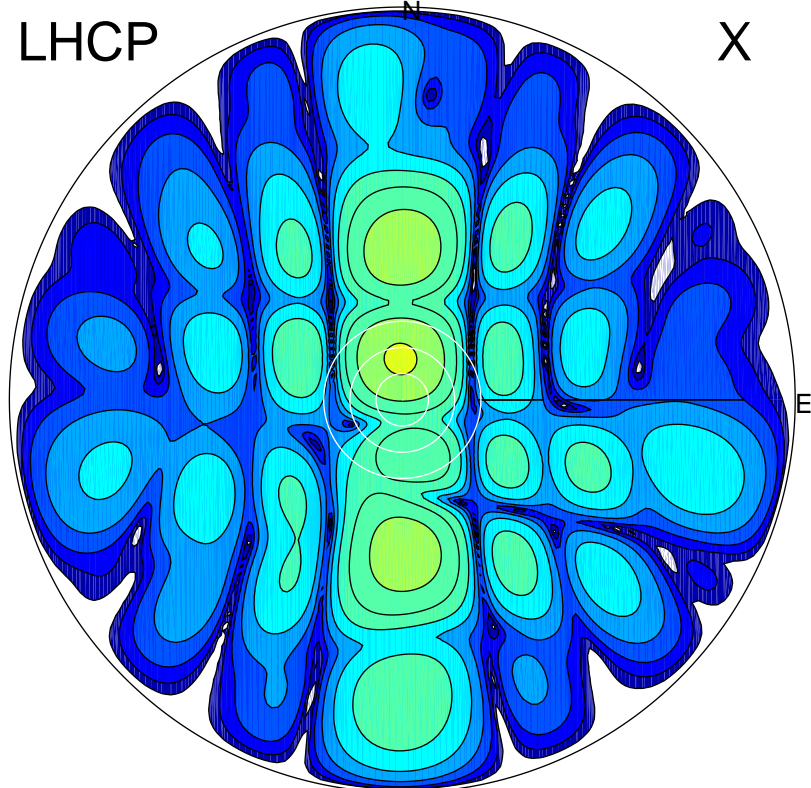


2018-04-07 13:30:28 A2 4.04000000 MHz 639.0 kW

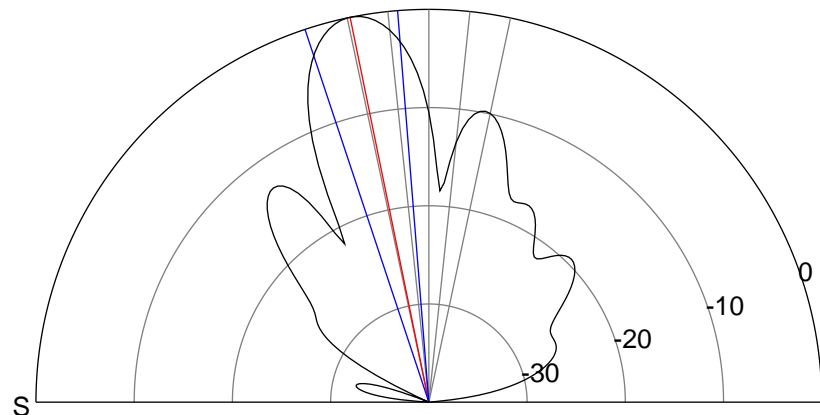
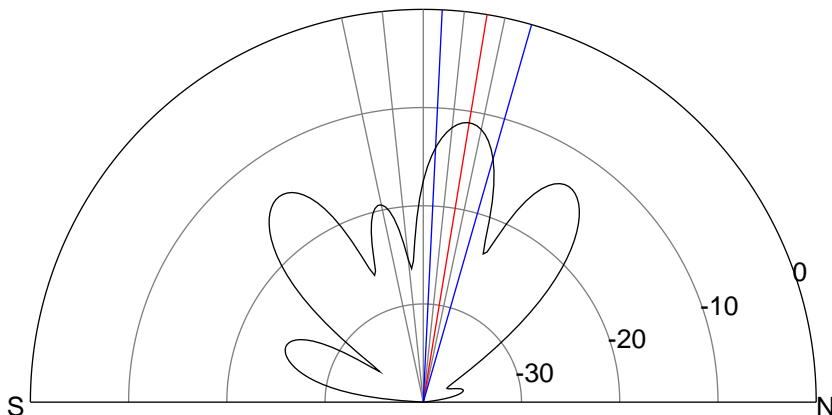
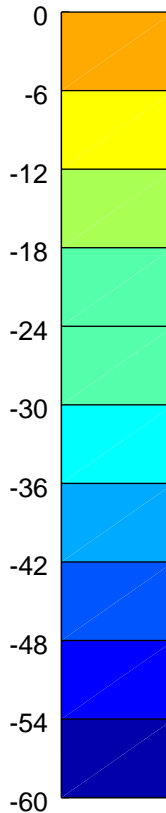
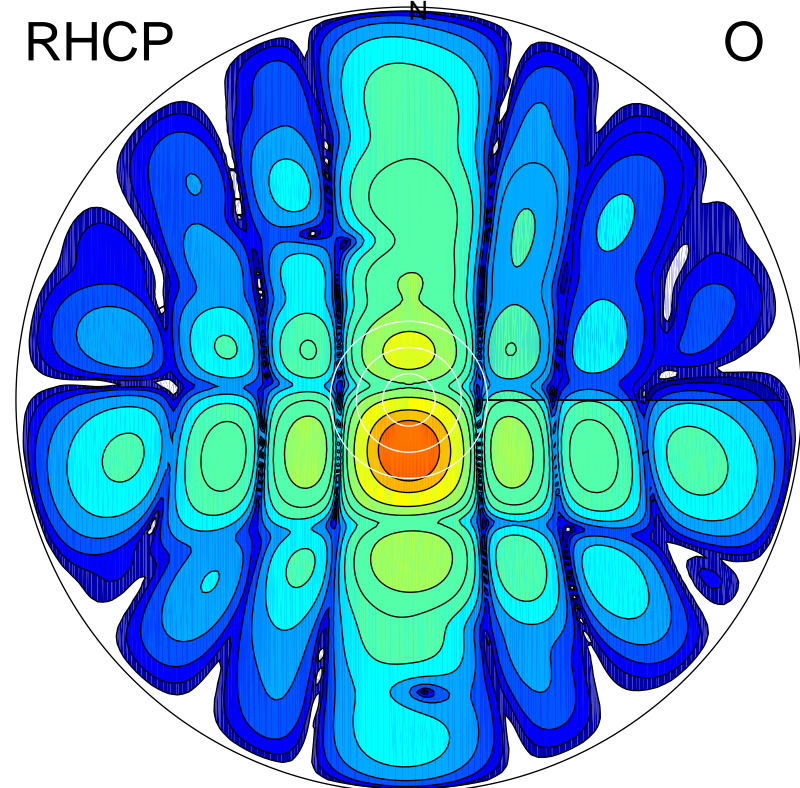
LHCP

X



RHCP

O



ERP 7.0 MW

Peak gain 10.4 dBi at Az 358 Zen 9
RHCP gain 11.3 dBi
N-S peak 10.4 dBi at Zen 9.3
N-S -3 dB beamwidth 13.2 deg.

ERP 91.5 MW

Peak gain 21.6 dBi at Az 180 Zen 12
LHCP gain 2.1 dBi
N-S peak 21.6 dBi at Zen -11.6
N-S -3 dB beamwidth 13.8 deg.