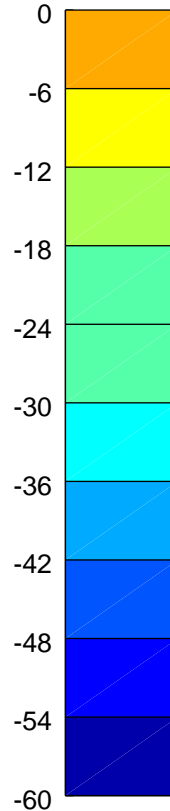
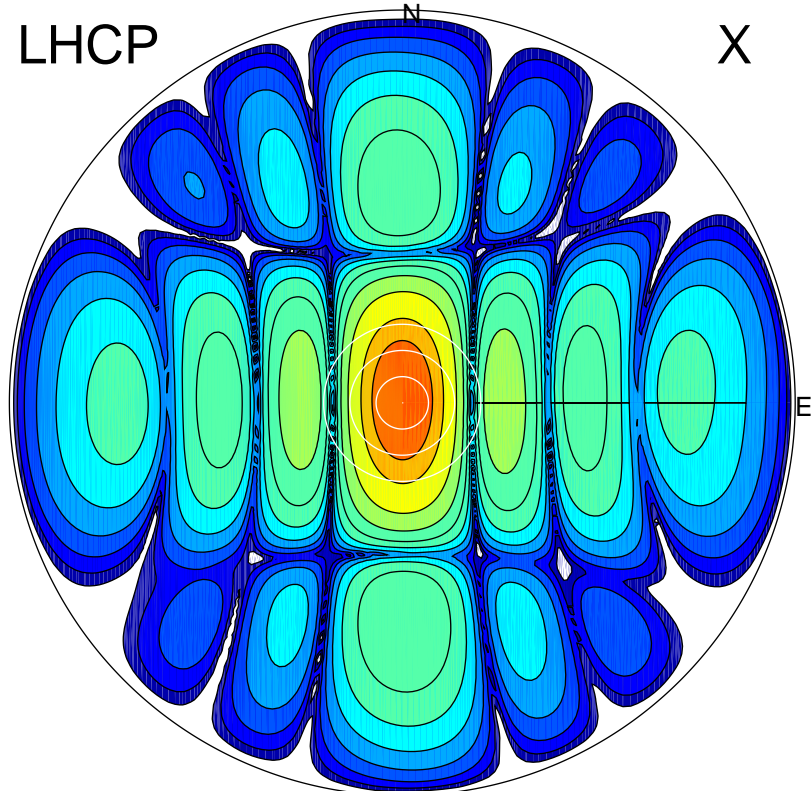


2017-11-24 11:54:00 A2 4.04201700 MHz 379.0 kW

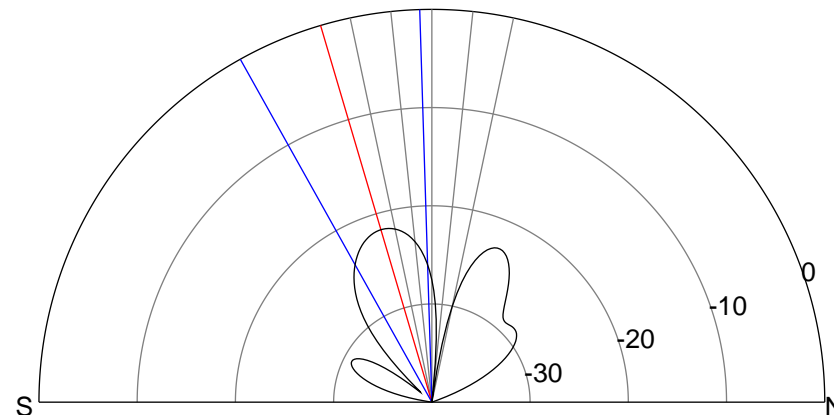
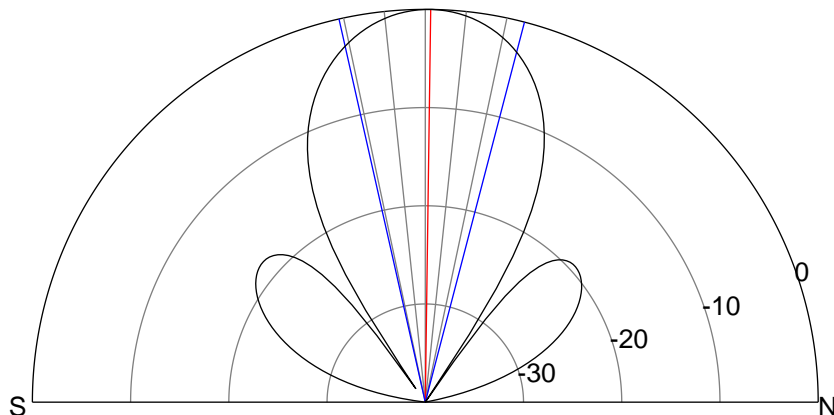
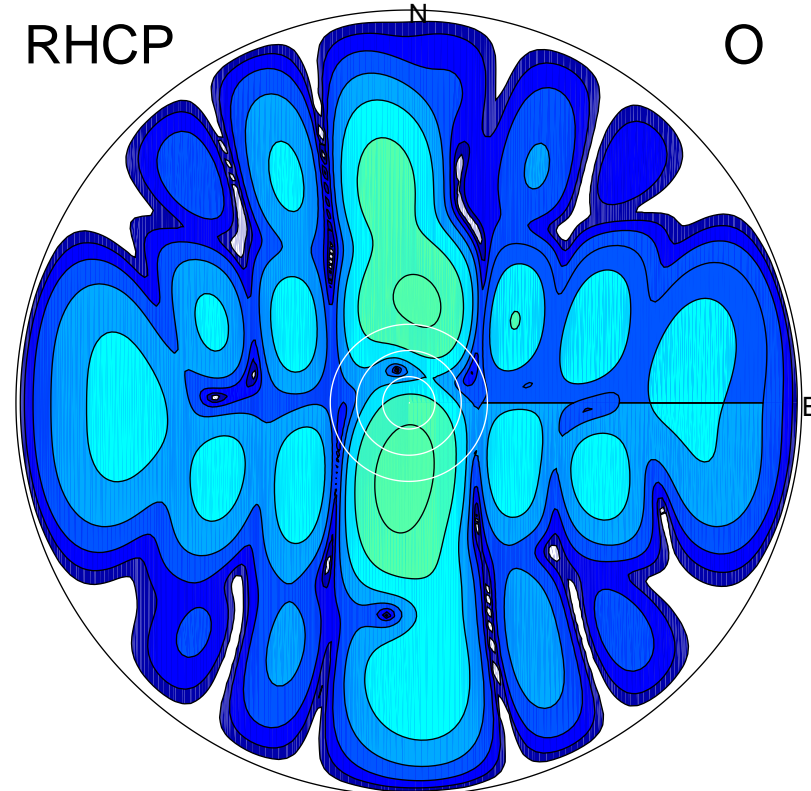
LHCP

X



RHCP

O



### ERP 35.2 MW

Peak gain 19.7 dBi at Az 357 Zen 1  
RHCP gain -9.0 dBi  
N-S peak 19.7 dBi at Zen 0.8  
N-S -3 dB beamwidth 27.3 deg.

### ERP 0.2 MW

Peak gain -1.9 dBi at Az 184 Zen 17  
LHCP gain 14.6 dBi  
N-S peak -2.0 dBi at Zen -16.5  
N-S -3 dB beamwidth 27.4 deg.