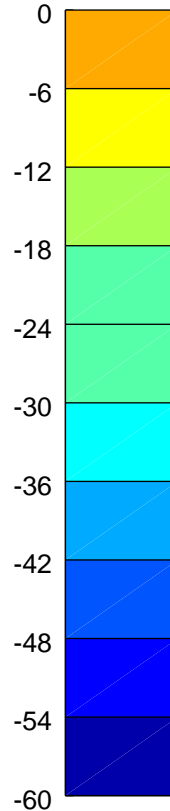
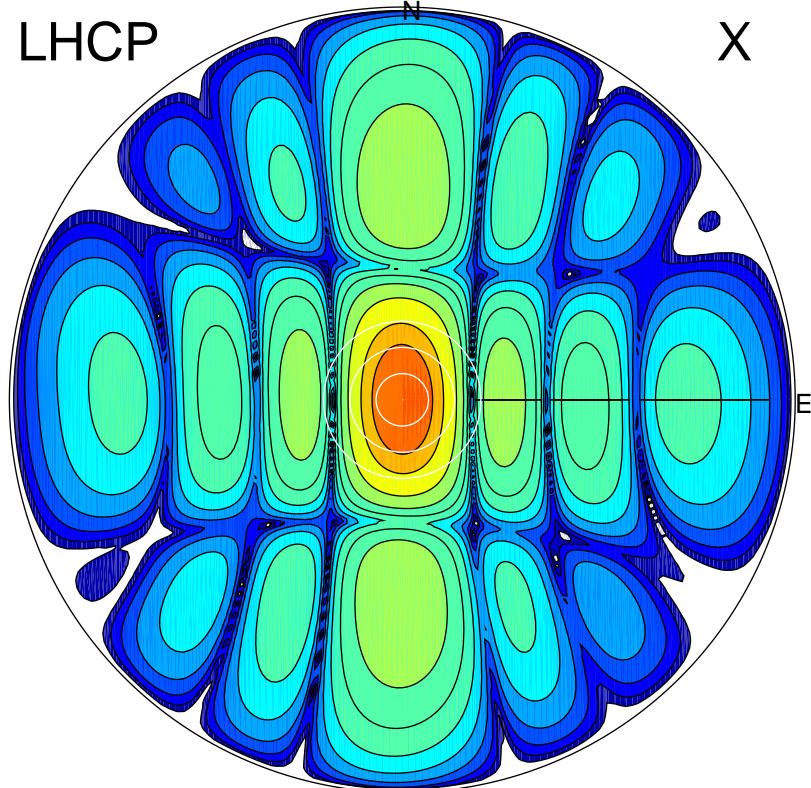


2017-11-24 11:54:00 A2 4.04000000 MHz 362.0 kW

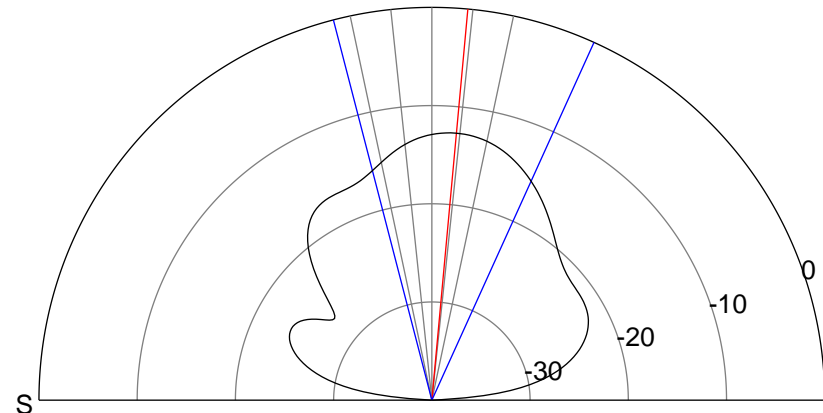
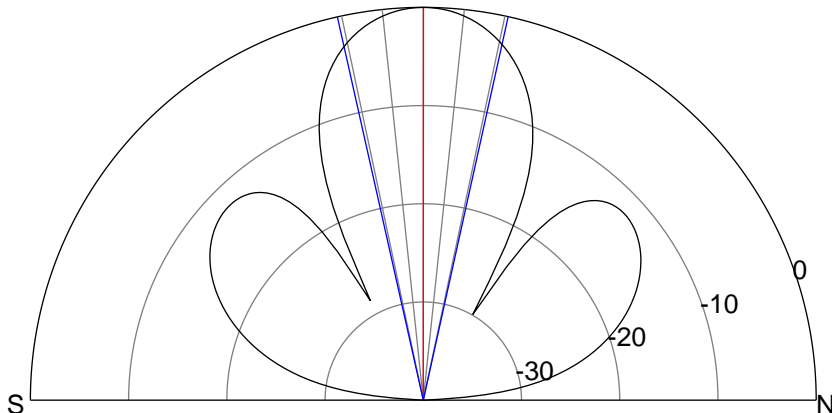
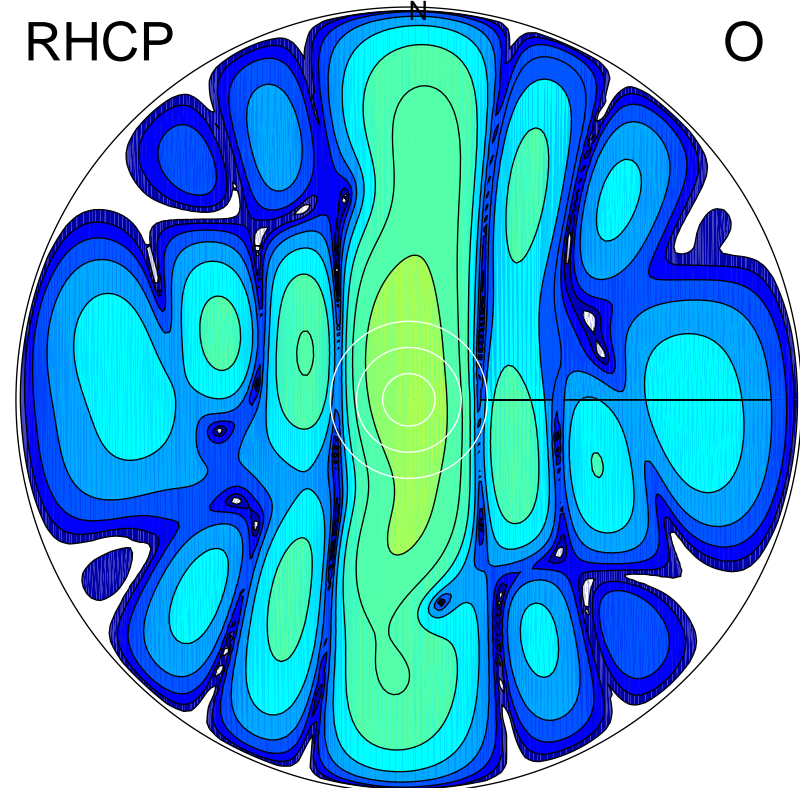
LHCP

X



RHCP

O



ERP 30.9 MW

Peak gain 19.3 dBi at Az 77 Zen 0
RHCP gain 6.4 dBi
N-S peak 19.3 dBi at Zen 0.0
N-S -3 dB beamwidth 25.1 deg.

ERP 1.7 MW

Peak gain 6.7 dBi at Az 351 Zen 6
LHCP gain 18.6 dBi
N-S peak 6.6 dBi at Zen 5.3
N-S -3 dB beamwidth 38.9 deg.