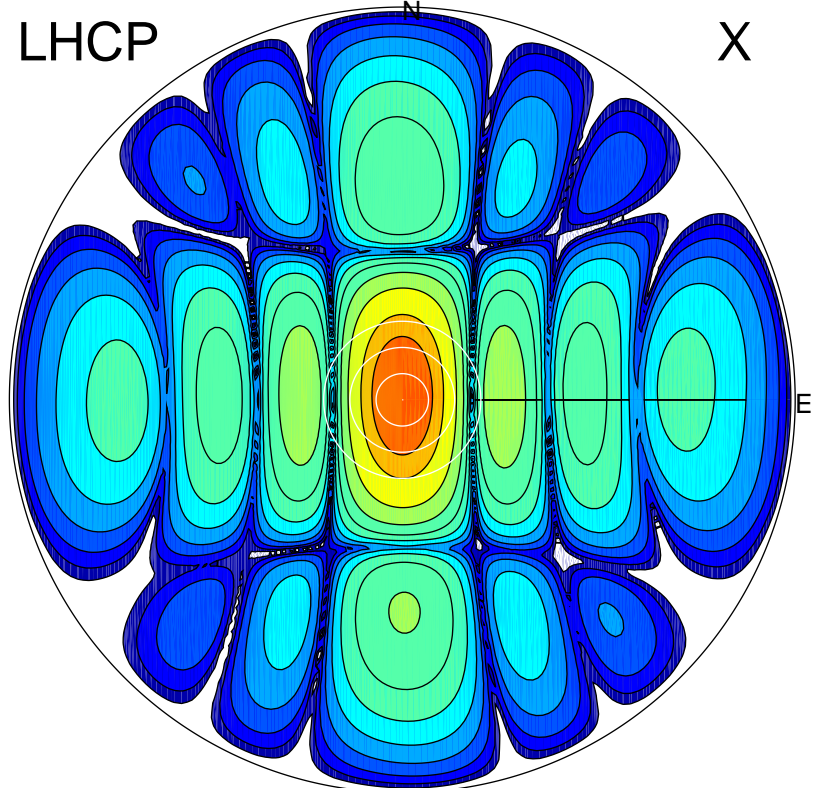


2017-11-24 11:52:00 A2 4.04201700 MHz 332.0 kW

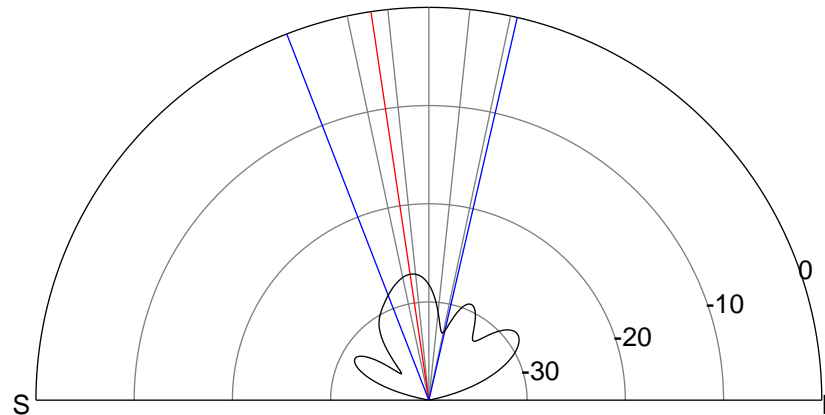
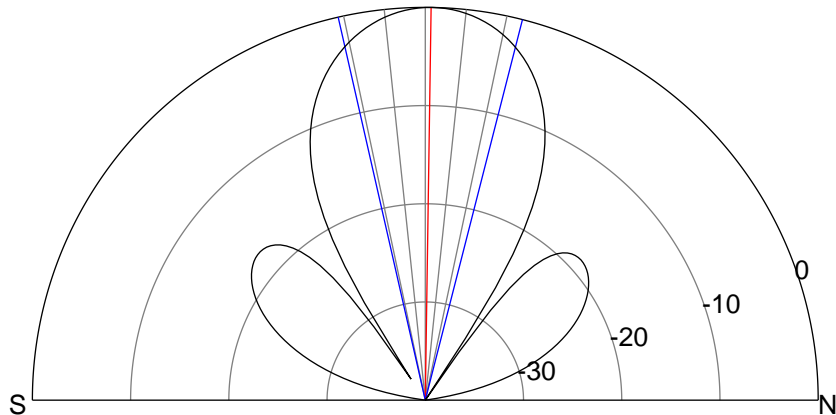
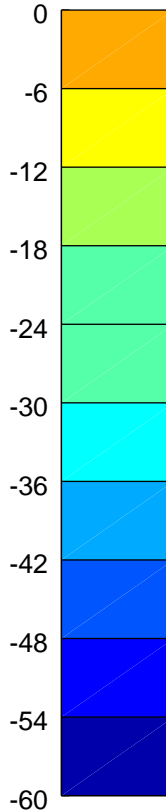
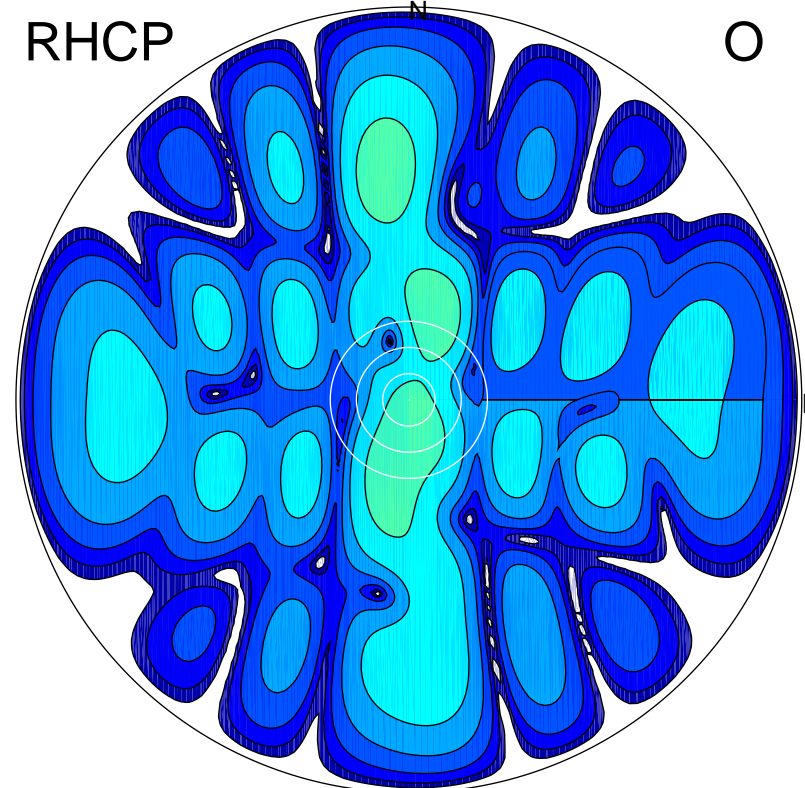
LHCP

X



RHCP

O



ERP 31.1 MW

Peak gain 19.7 dBi at Az 352 Zen 1
RHCP gain -8.9 dBi
N-S peak 19.7 dBi at Zen 0.9
N-S -3 dB beamwidth 27.1 deg.

ERP 0.1 MW

Peak gain -6.6 dBi at Az 18 Zen 20
LHCP gain 11.9 dBi
N-S peak -7.3 dBi at Zen -8.5
N-S -3 dB beamwidth 34.2 deg.