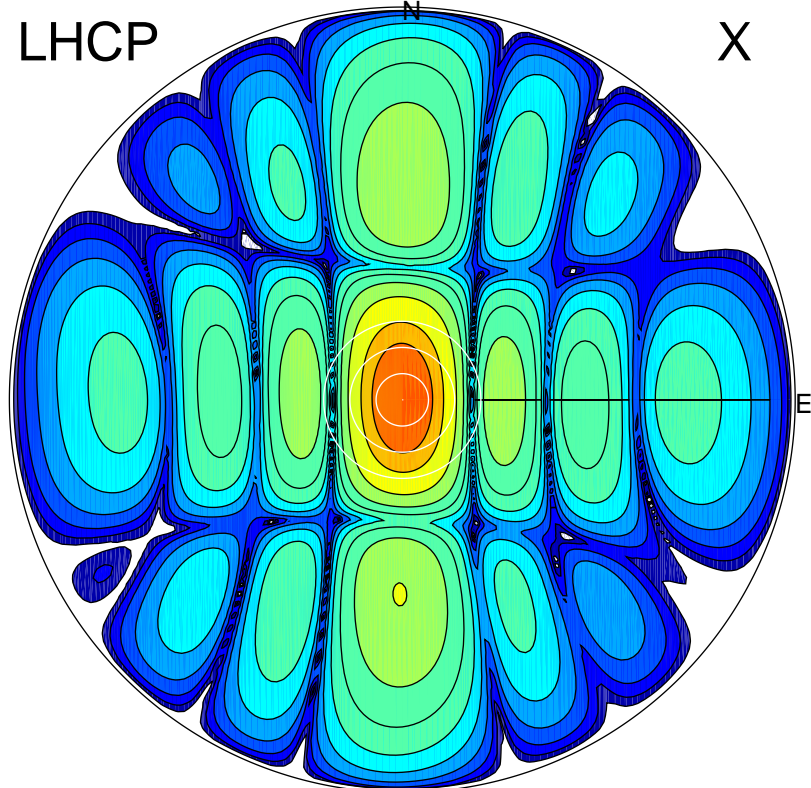


2017-11-24 11:52:00 A2 4.04000000 MHz 284.0 kW

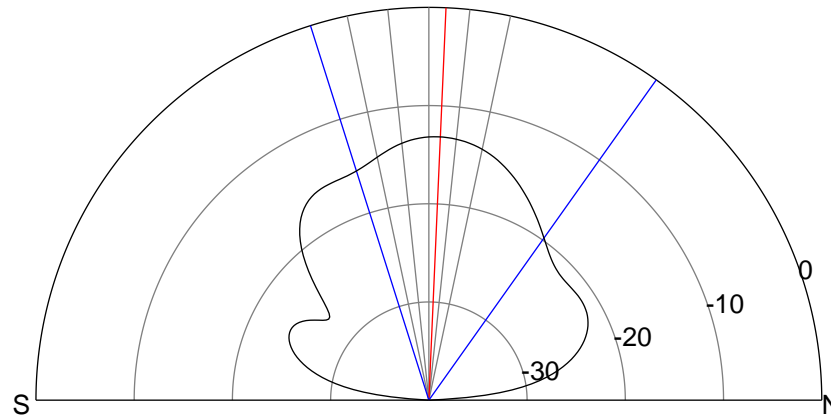
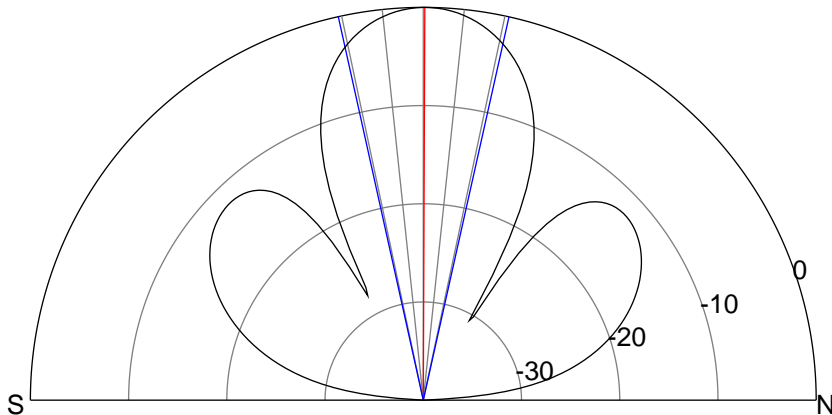
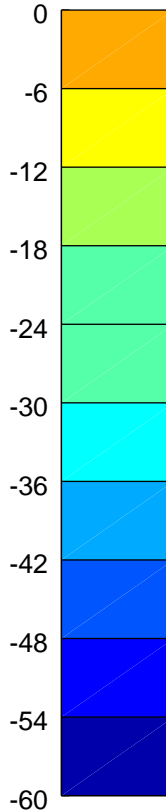
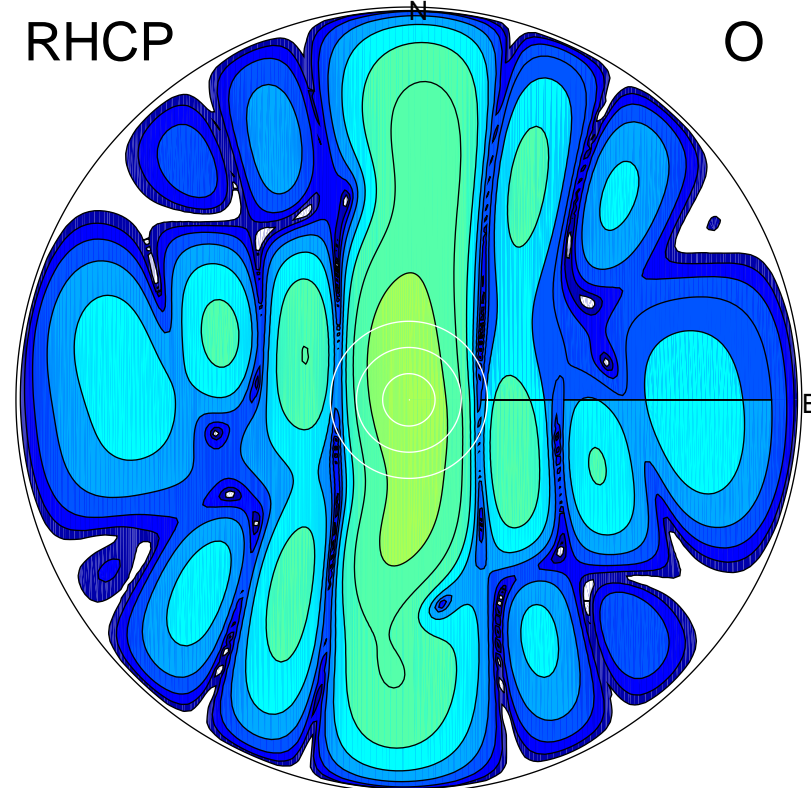
LHCP

X



RHCP

O



ERP 24.3 MW

Peak gain 19.3 dBi at Az 5 Zen 0
RHCP gain 6.1 dBi
N-S peak 19.3 dBi at Zen 0.2
N-S -3 dB beamwidth 25.1 deg.

ERP 1.2 MW

Peak gain 6.2 dBi at Az 346 Zen 3
LHCP gain 19.2 dBi
N-S peak 6.2 dBi at Zen 2.5
N-S -3 dB beamwidth 52.9 deg.