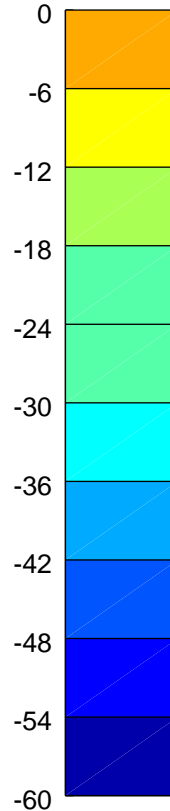
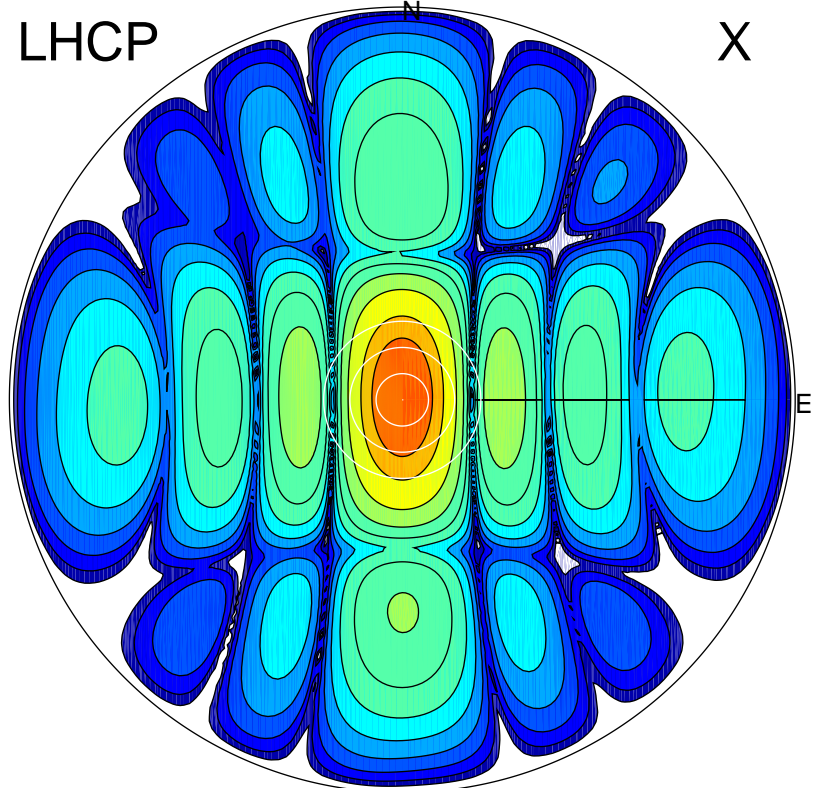


2017-11-24 11:50:00 A2 4.04201700 MHz 188.0 kW

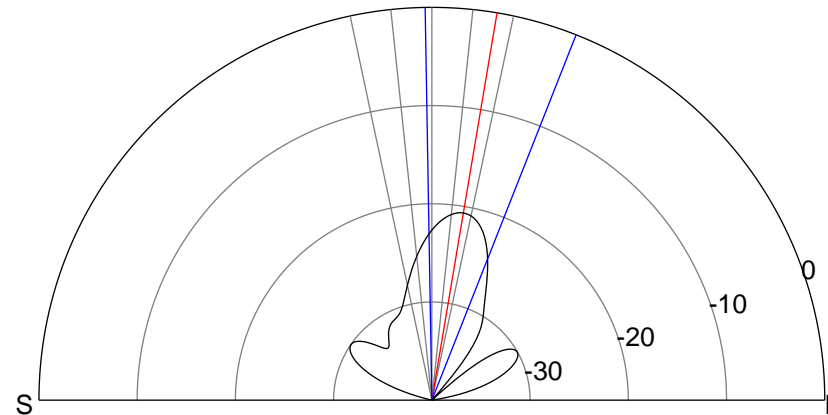
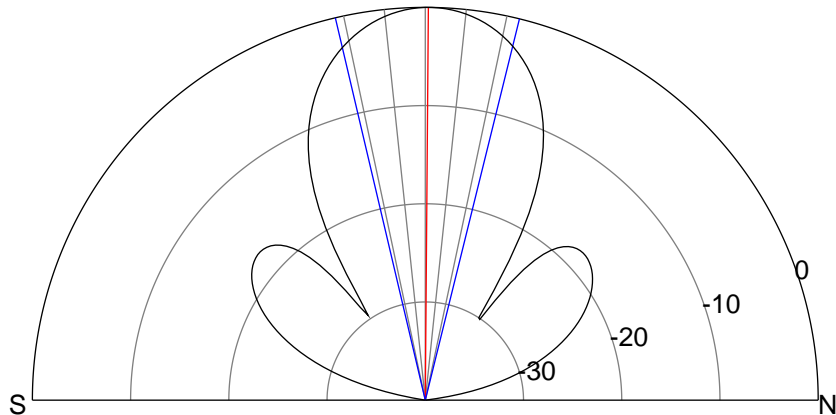
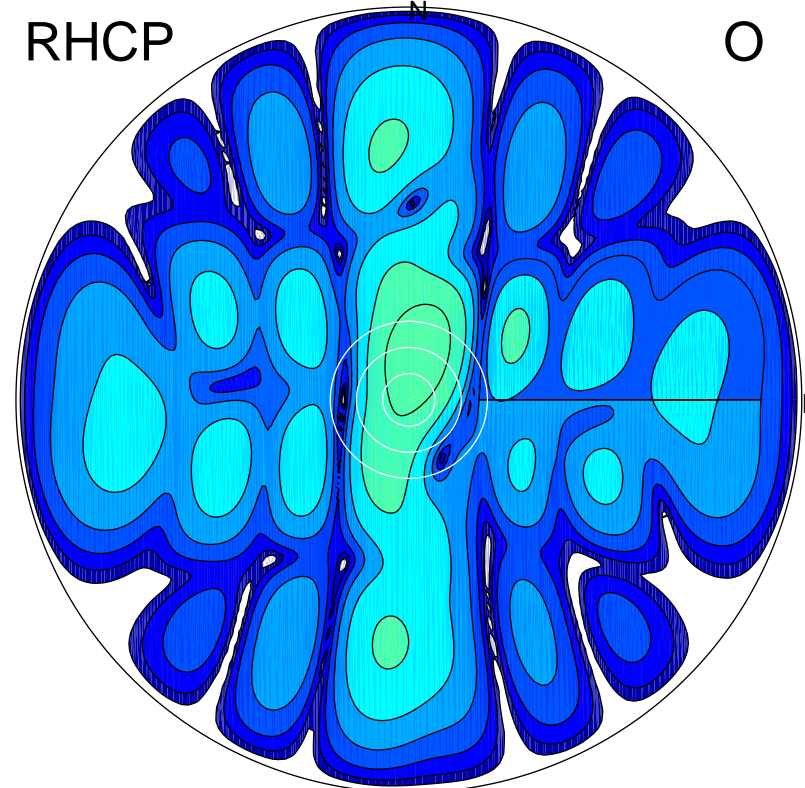
LHCP

X



RHCP

O



ERP 17.5 MW

Peak gain 19.7 dBi at Az 46 Zen 0
RHCP gain -3.0 dBi
N-S peak 19.7 dBi at Zen 0.4
N-S -3 dB beamwidth 27.1 deg.

ERP 0.2 MW

Peak gain -0.7 dBi at Az 12 Zen 11
LHCP gain 17.7 dBi
N-S peak -1.0 dBi at Zen 9.6
N-S -3 dB beamwidth 22.5 deg.