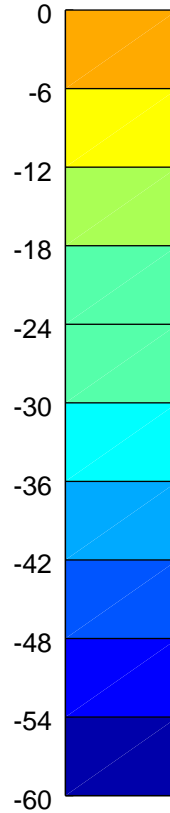
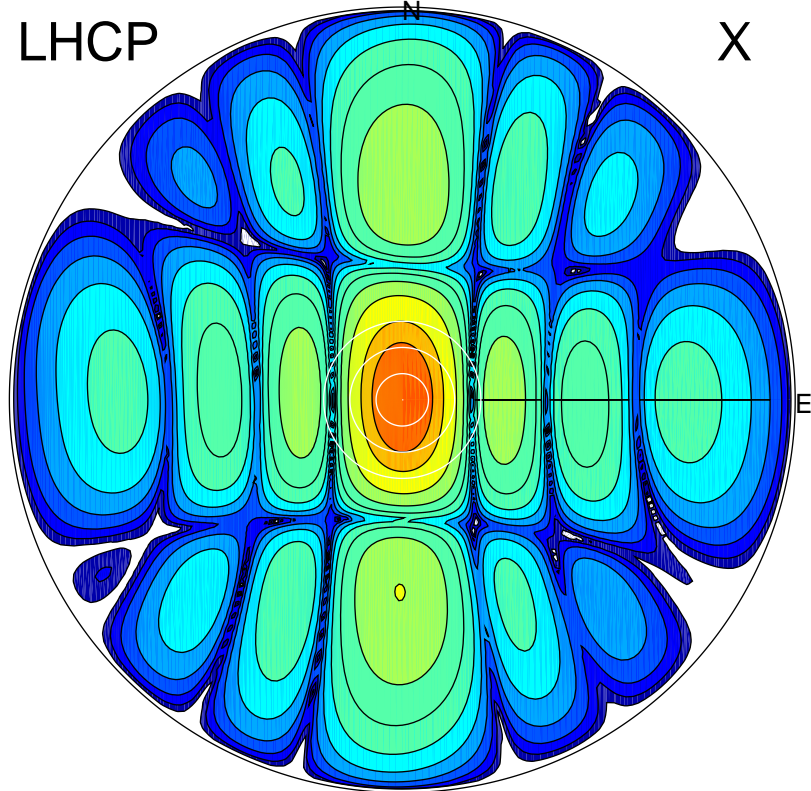


2017-11-24 11:50:00 A2 4.04000000 MHz 162.0 kW

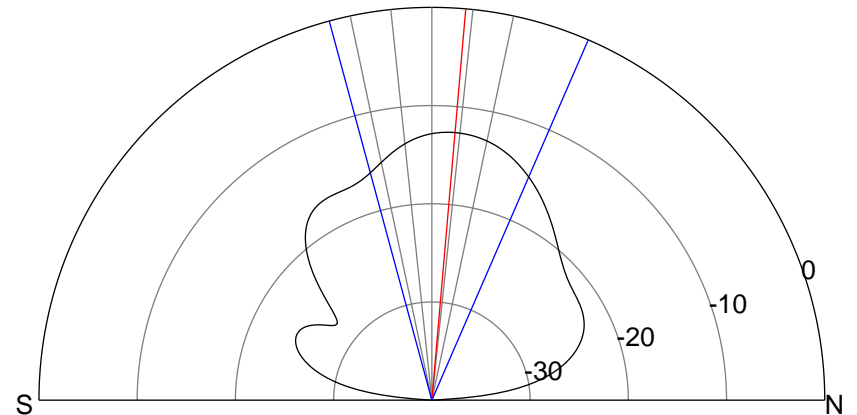
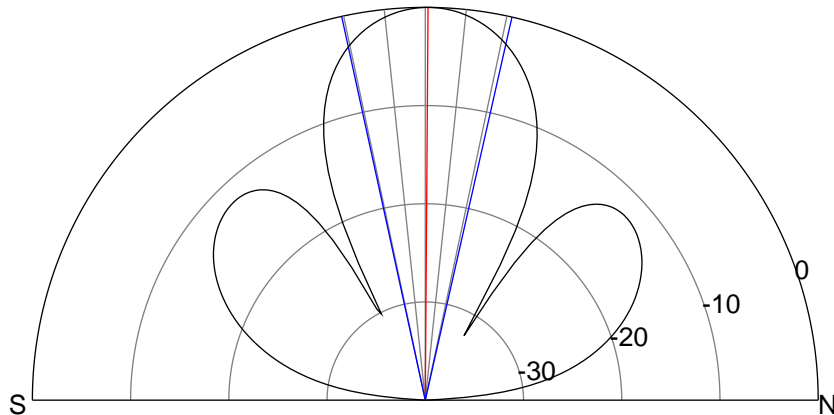
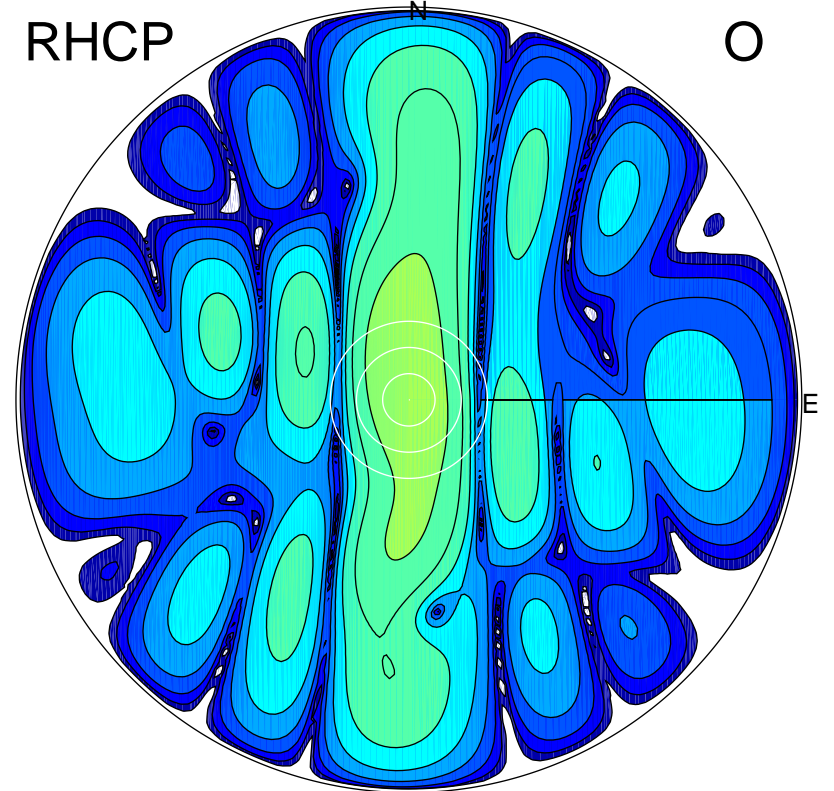
LHCP

X



RHCP

O



ERP 13.9 MW

Peak gain 19.3 dBi at Az 94 Zen 0
RHCP gain 6.5 dBi
N-S peak 19.3 dBi at Zen 0.4
N-S -3 dB beamwidth 25.0 deg.

ERP 0.8 MW

Peak gain 6.7 dBi at Az 350 Zen 6
LHCP gain 18.7 dBi
N-S peak 6.7 dBi at Zen 4.9
N-S -3 dB beamwidth 38.6 deg.