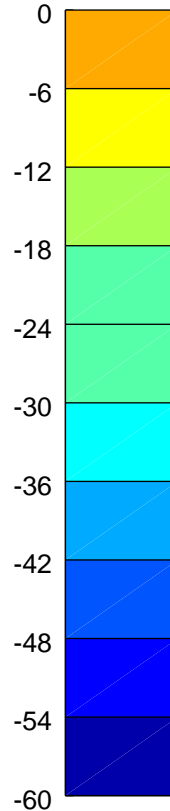
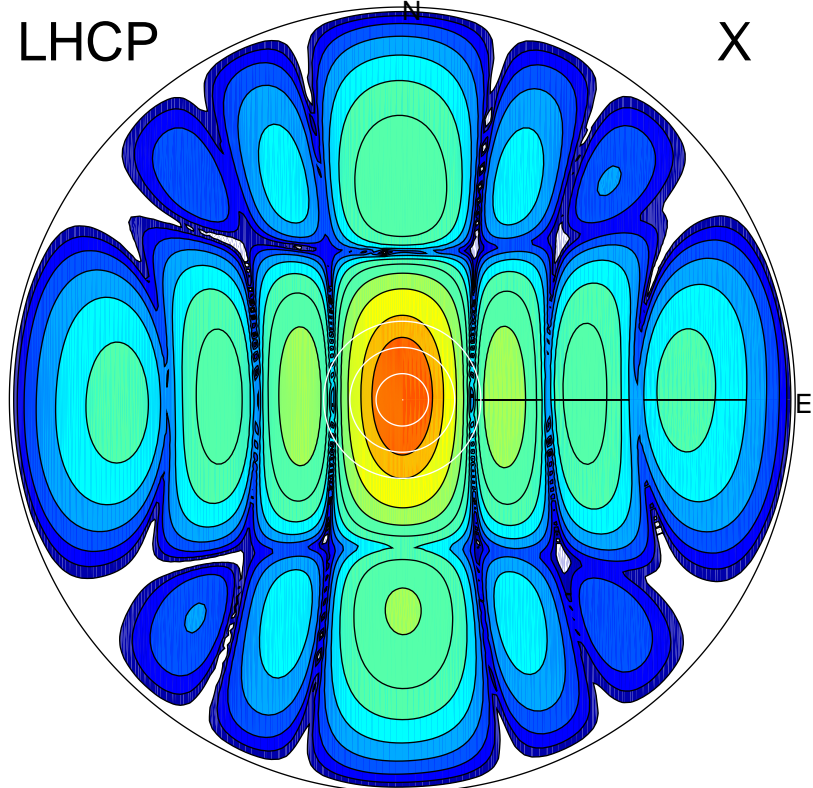


2017-11-24 11:48:00 A2 4.04201700 MHz 108.0 kW

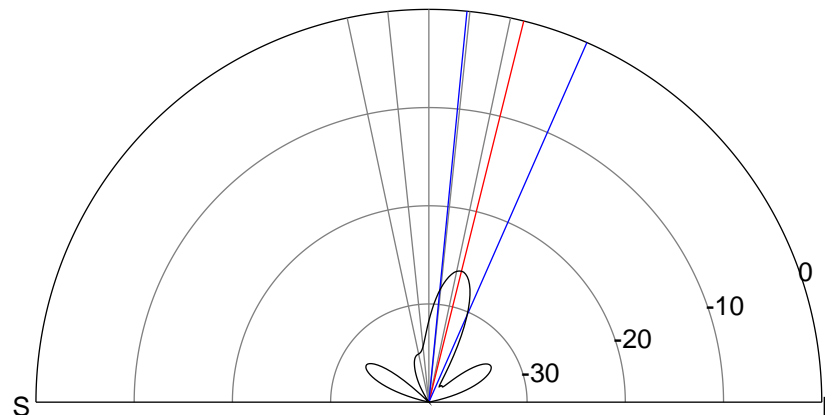
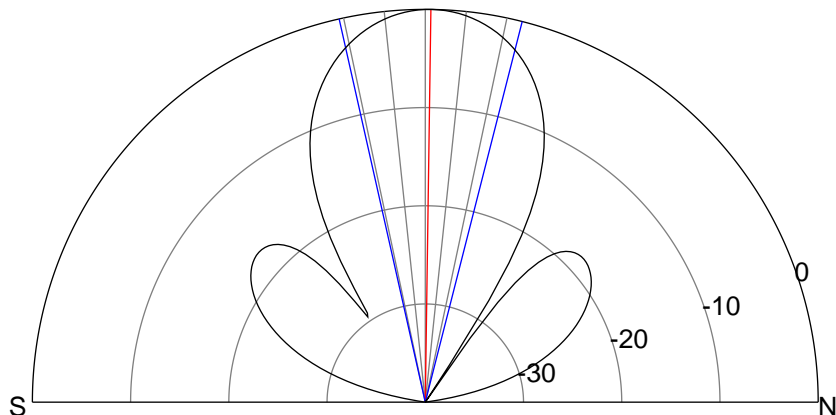
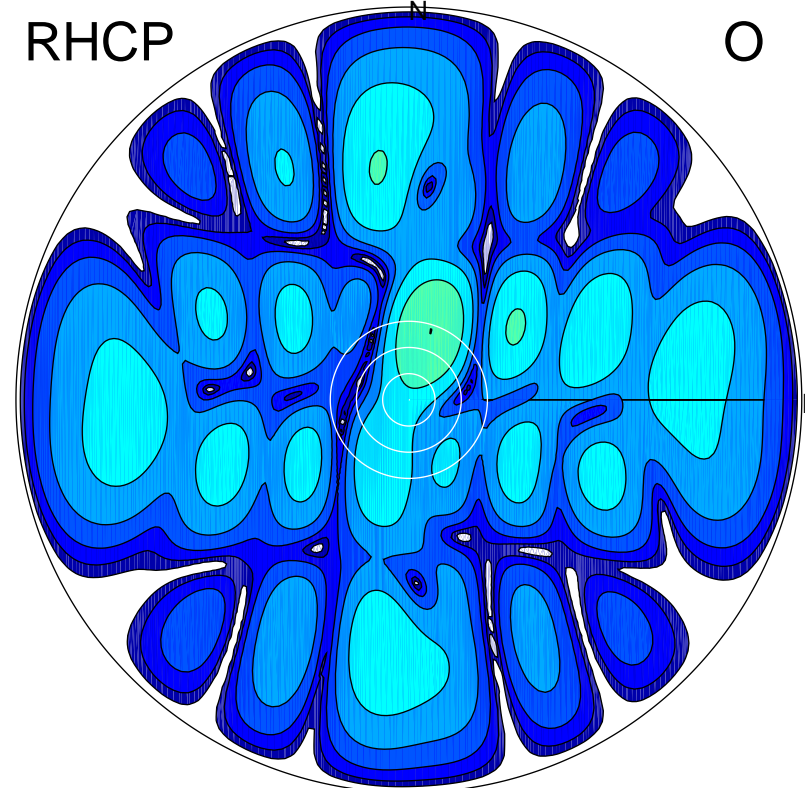
LHCP

X



RHCP

O



ERP 10.2 MW

Peak gain 19.7 dBi at Az 340 Zen 1
RHCP gain -11.5 dBi
N-S peak 19.7 dBi at Zen 0.8
N-S -3 dB beamwidth 26.9 deg.

ERP 0.0 MW

Peak gain -4.3 dBi at Az 18 Zen 16
LHCP gain 14.9 dBi
N-S peak -6.5 dBi at Zen 14.0
N-S -3 dB beamwidth 18.1 deg.