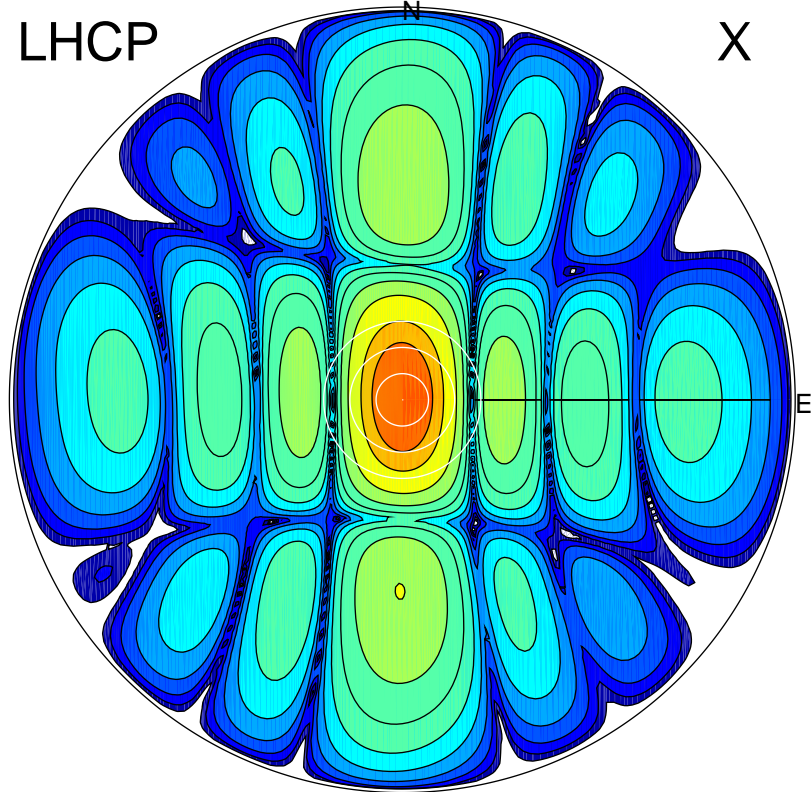


2017-11-24 11:48:00 A2 4.04000000 MHz 95.0 kW

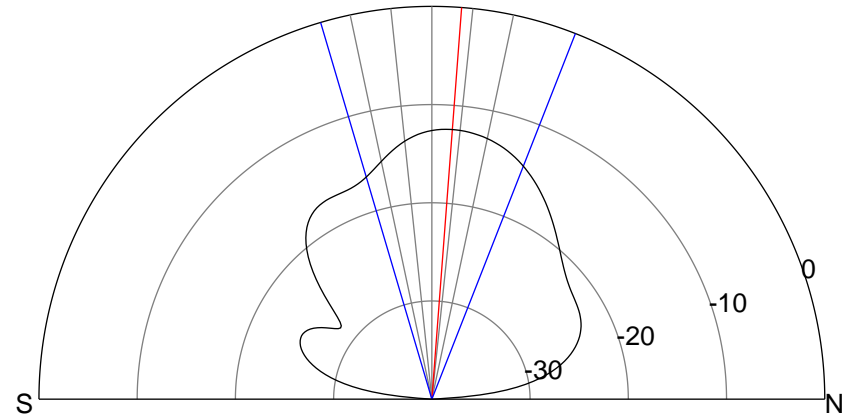
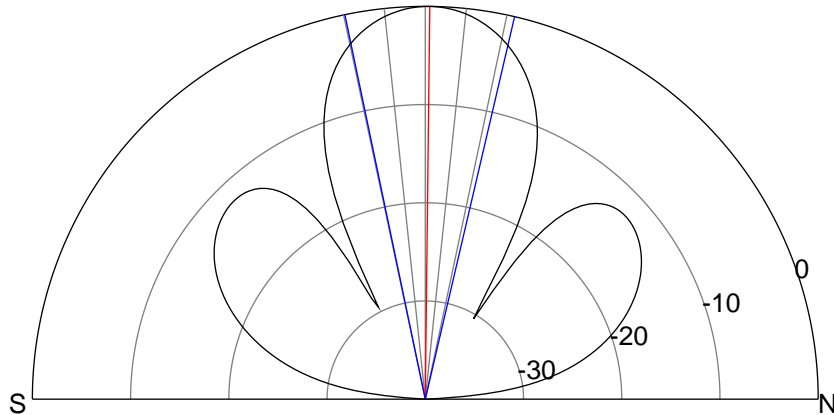
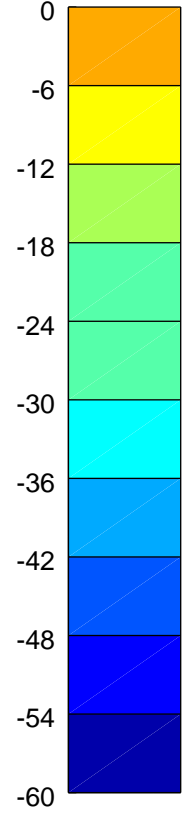
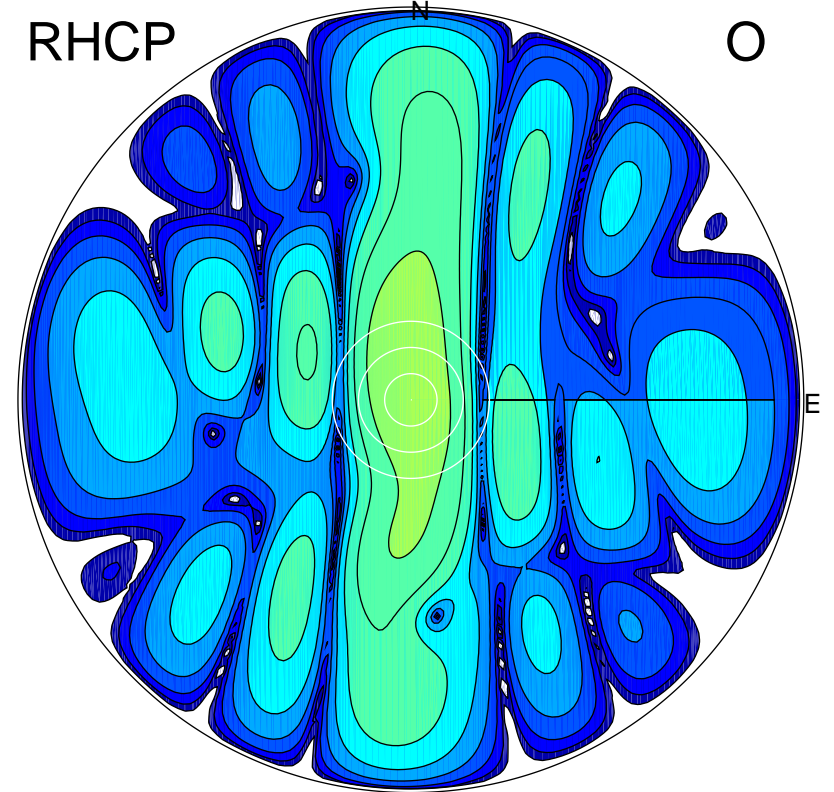
LHCP

X



RHCP

O



ERP 8.1 MW

Peak gain 19.3 dBi at Az 12 Zen 1
RHCP gain 6.8 dBi
N-S peak 19.3 dBi at Zen 0.7
N-S -3 dB beamwidth 25.0 deg.

ERP 0.5 MW

Peak gain 6.9 dBi at Az 350 Zen 5
LHCP gain 18.9 dBi
N-S peak 6.9 dBi at Zen 4.3
N-S -3 dB beamwidth 37.9 deg.