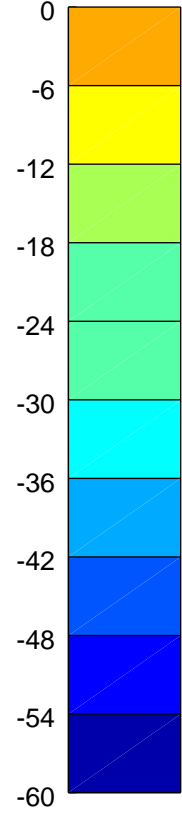
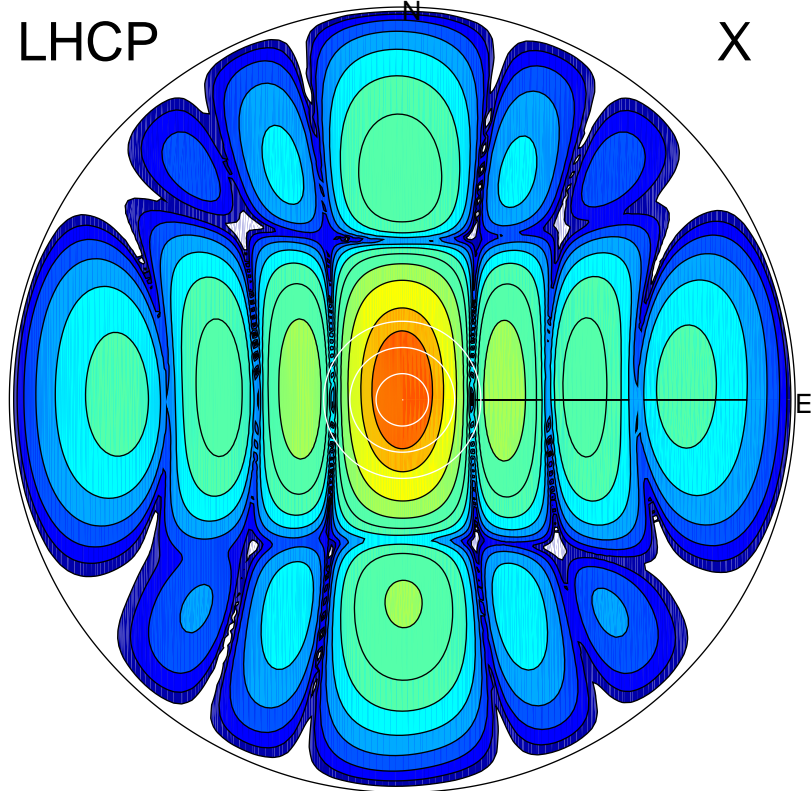


2017-11-24 11:46:00 A2 4.04201700 MHz 30.0 kW

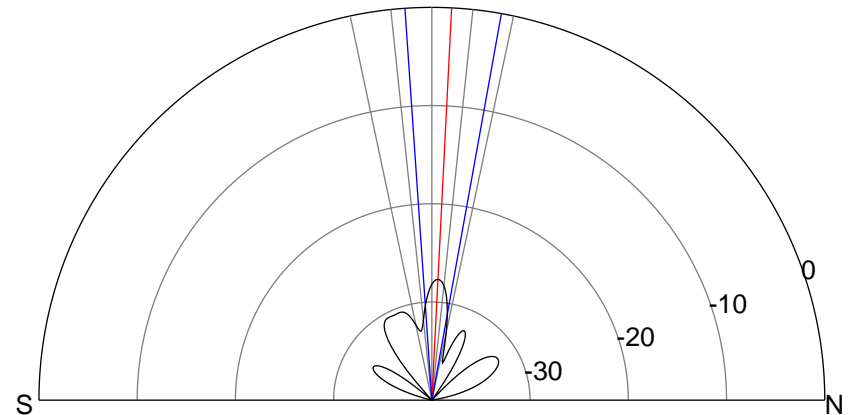
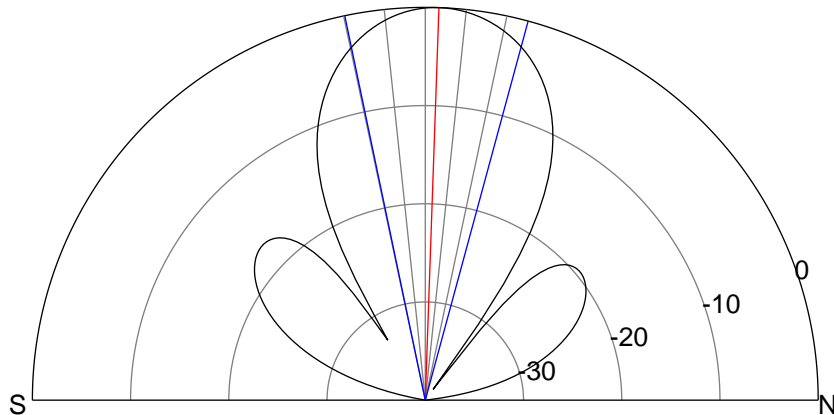
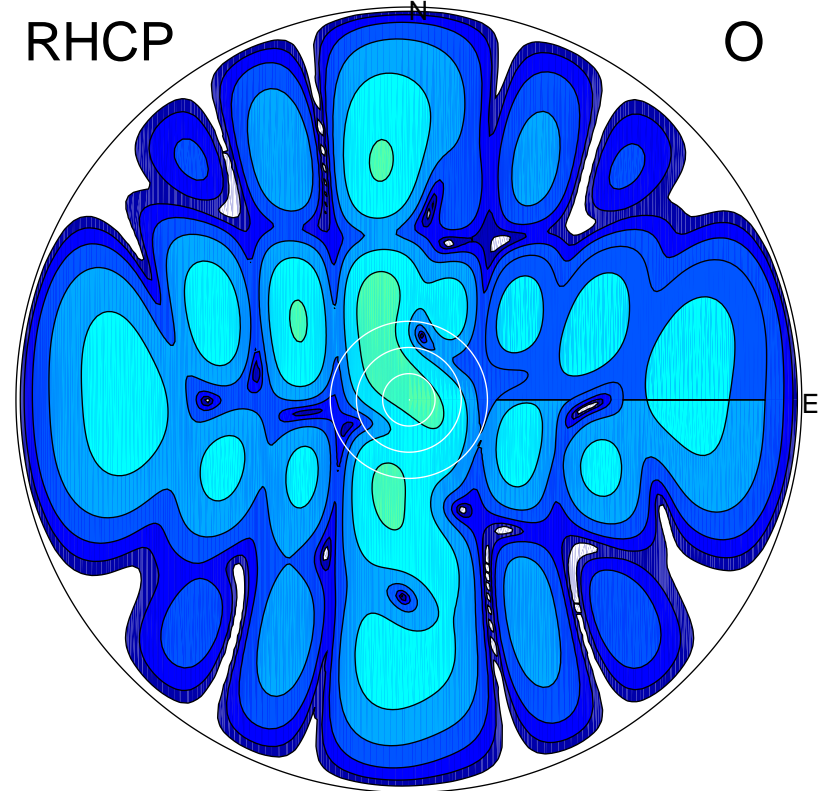
LHCP

X



RHCP

O



### ERP 2.8 MW

Peak gain 19.7 dBi at Az 7 Zen 2  
RHCP gain -8.0 dBi  
N-S peak 19.7 dBi at Zen 2.0  
N-S -3 dB beamwidth 27.0 deg.

### ERP 0.0 MW

Peak gain -7.6 dBi at Az 341 Zen 22  
LHCP gain 10.9 dBi  
N-S peak -7.9 dBi at Zen 2.9  
N-S -3 dB beamwidth 14.1 deg.