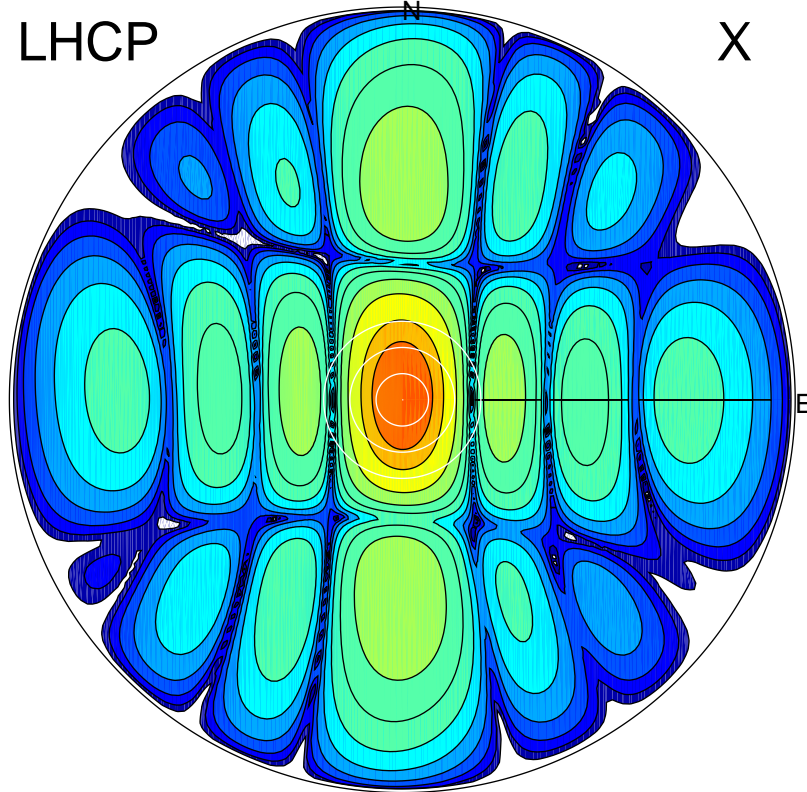


2017-11-24 11:46:00 A2 4.04000000 MHz 27.0 kW

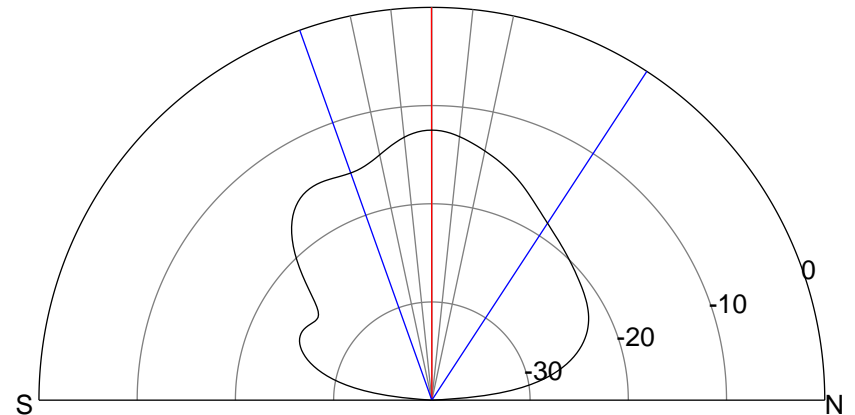
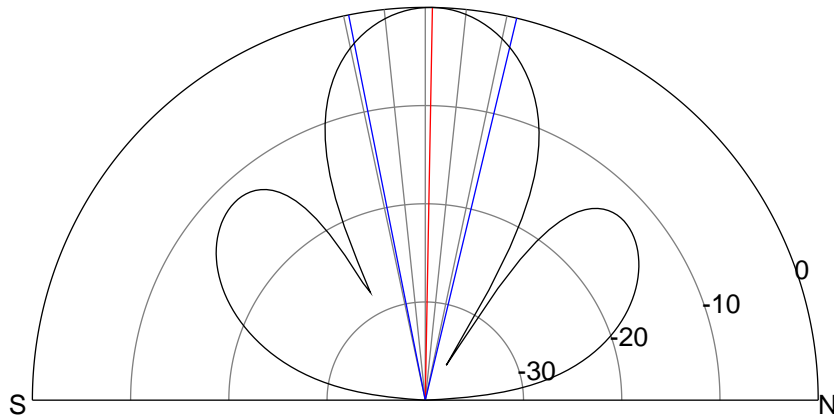
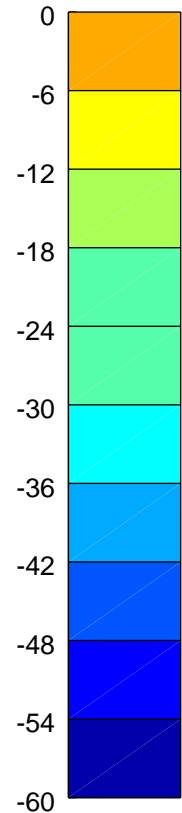
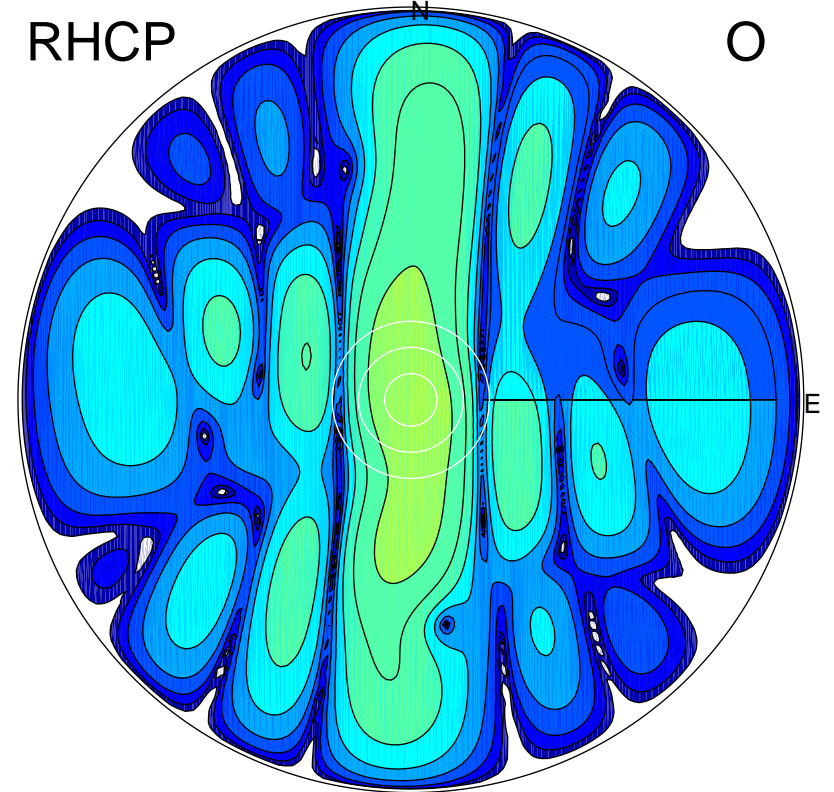
LHCP

X



RHCP

O



ERP 2.3 MW

Peak gain 19.3 dBi at Az 14 Zen 1
RHCP gain 6.8 dBi
N-S peak 19.3 dBi at Zen 1.0
N-S -3 dB beamwidth 24.7 deg.

ERP 0.1 MW

Peak gain 6.8 dBi at Az 62 Zen 0
LHCP gain 19.3 dBi
N-S peak 6.8 dBi at Zen -0.1
N-S -3 dB beamwidth 52.8 deg.