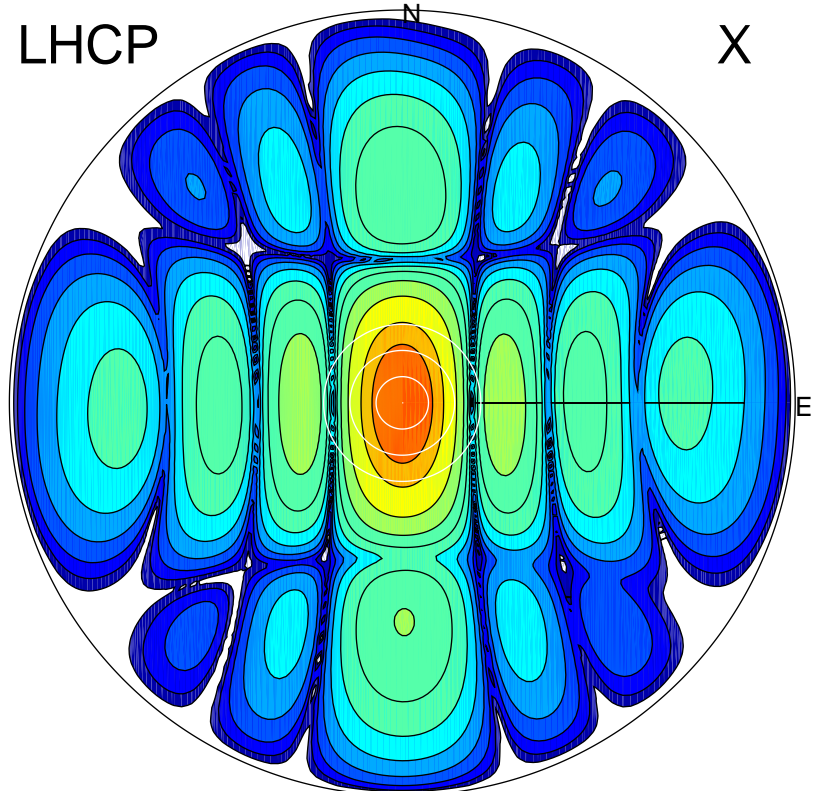


2017-11-24 11:44:00 A2 4.04051800 MHz 390.0 kW

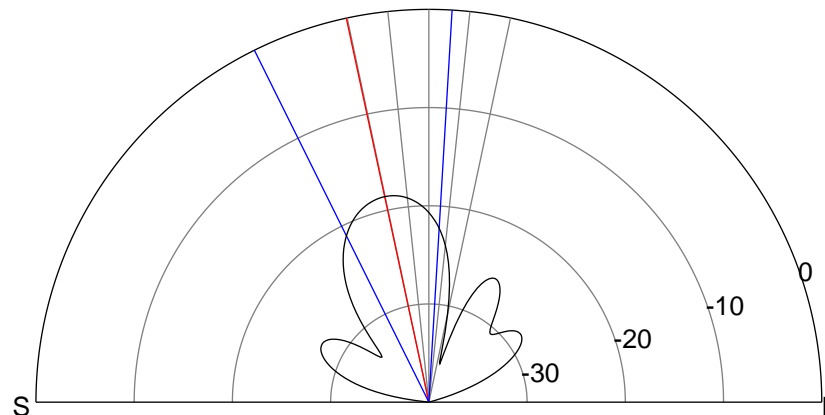
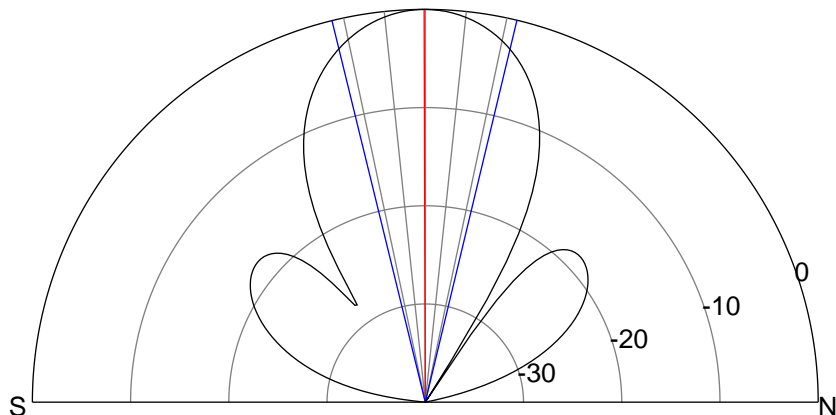
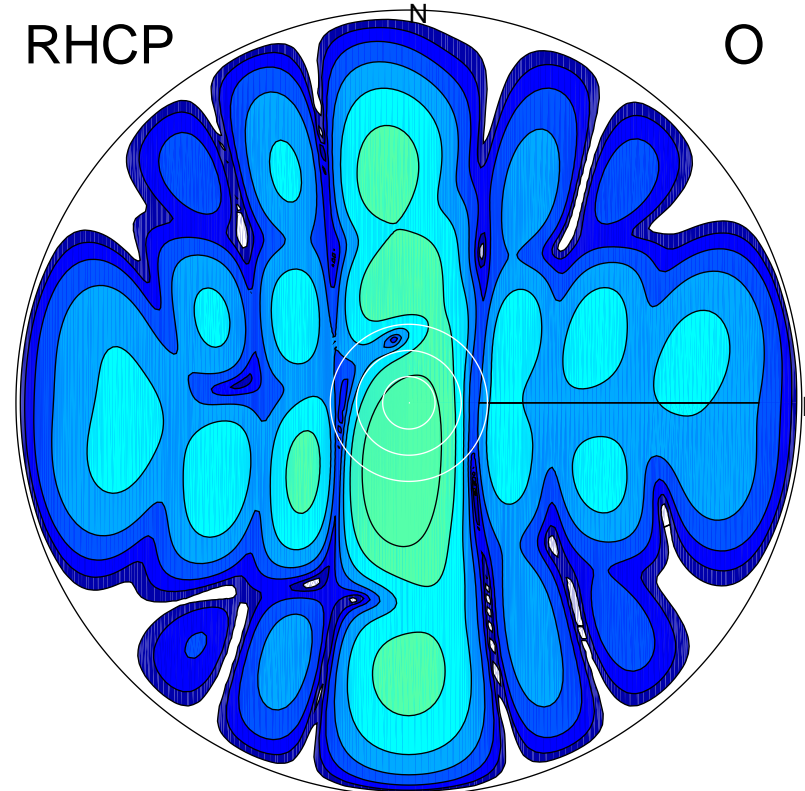
LHCP

X



RHCP

O



ERP 36.0 MW

Peak gain 19.6 dBi at Az 40 Zen 0

RHCP gain -1.0 dBi

N-S peak 19.6 dBi at Zen -0.2

N-S -3 dB beamwidth 27.2 deg.

ERP 0.5 MW

Peak gain 1.3 dBi at Az 189 Zen 13

LHCP gain 16.8 dBi

N-S peak 1.1 dBi at Zen -12.1

N-S -3 dB beamwidth 29.8 deg.