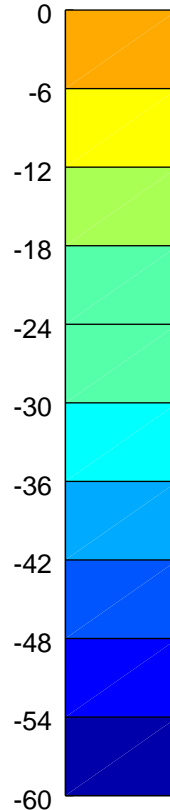
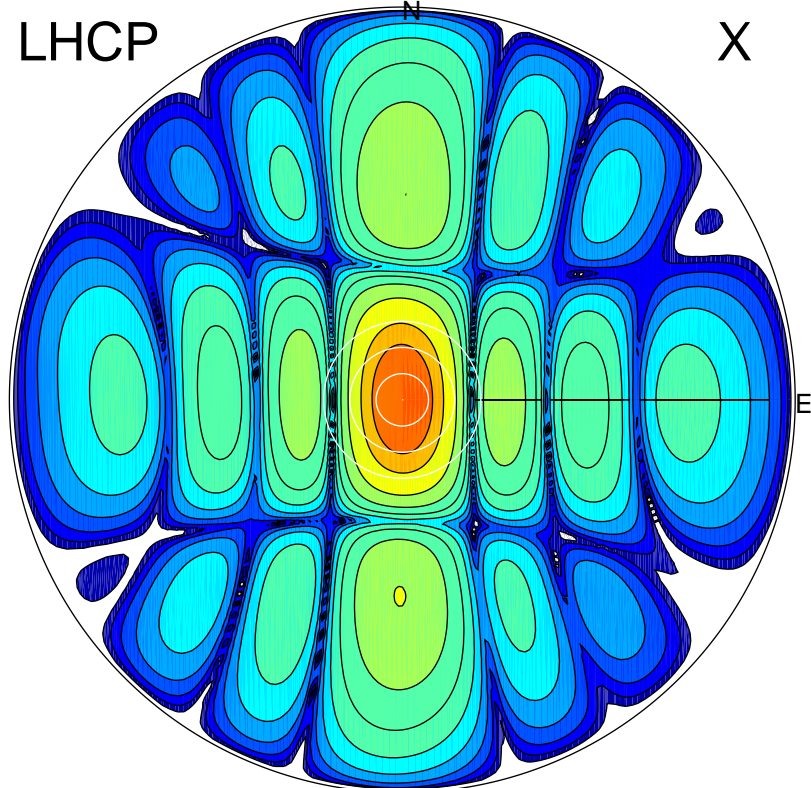


2017-11-24 11:44:00 A2 4.04000000 MHz 376.0 kW

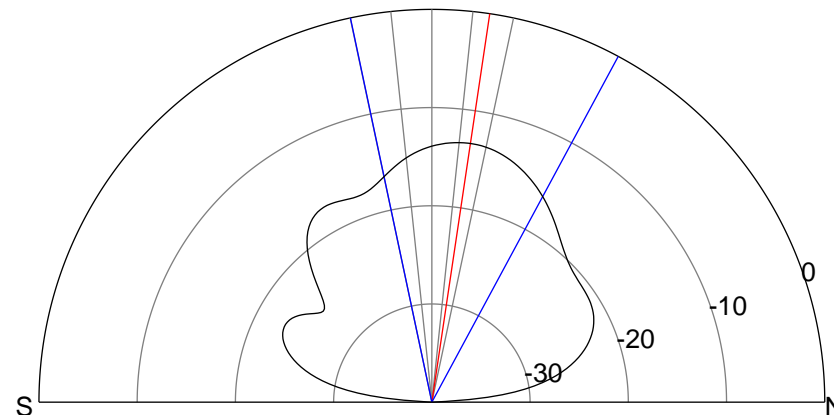
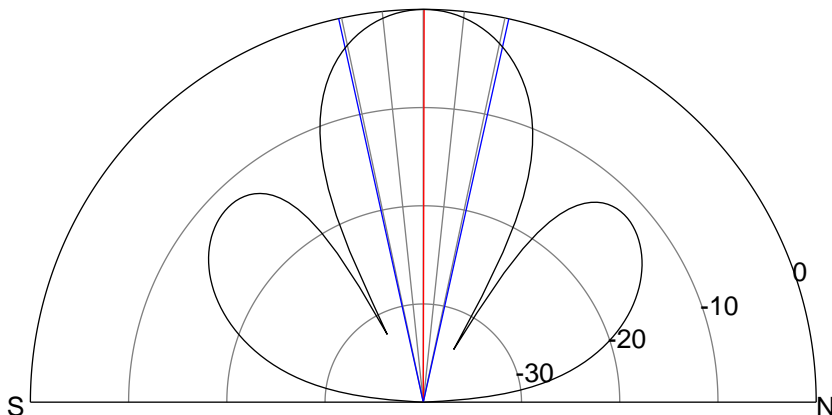
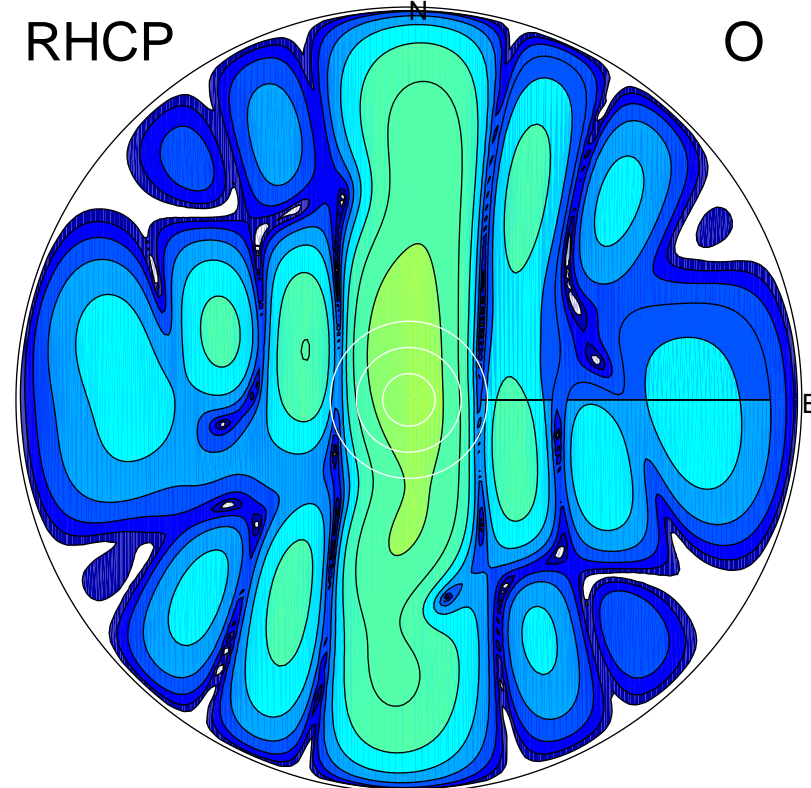
LHCP

X



RHCP

O



ERP 32.3 MW

Peak gain 19.3 dBi at Az 2 Zen 0
RHCP gain 5.4 dBi
N-S peak 19.3 dBi at Zen 0.1
N-S -3 dB beamwidth 25.0 deg.

ERP 1.5 MW

Peak gain 6.1 dBi at Az 352 Zen 9
LHCP gain 17.8 dBi
N-S peak 6.0 dBi at Zen 8.5
N-S -3 dB beamwidth 40.3 deg.