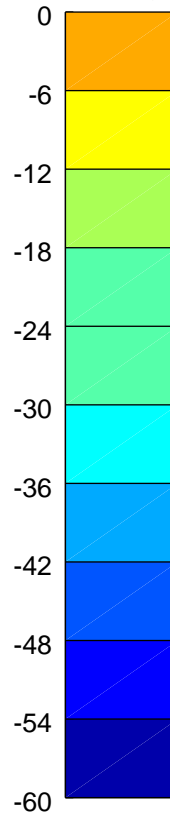
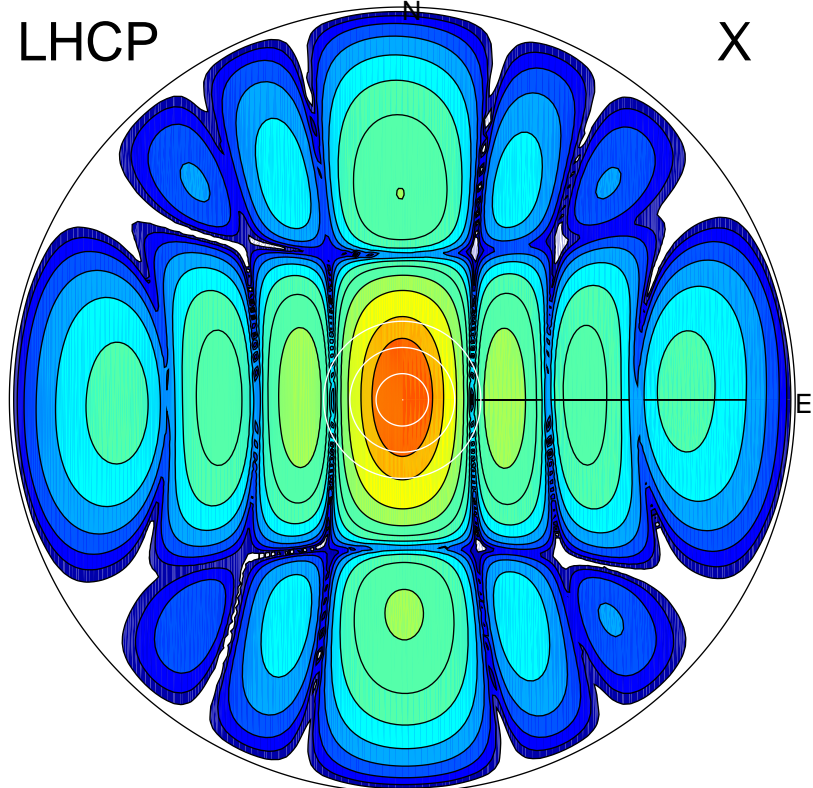


2017-11-24 11:42:00 A2 4.04051800 MHz 336.0 kW

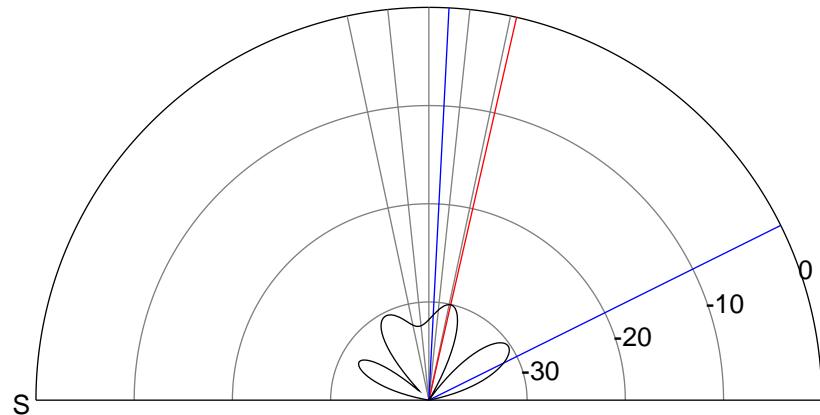
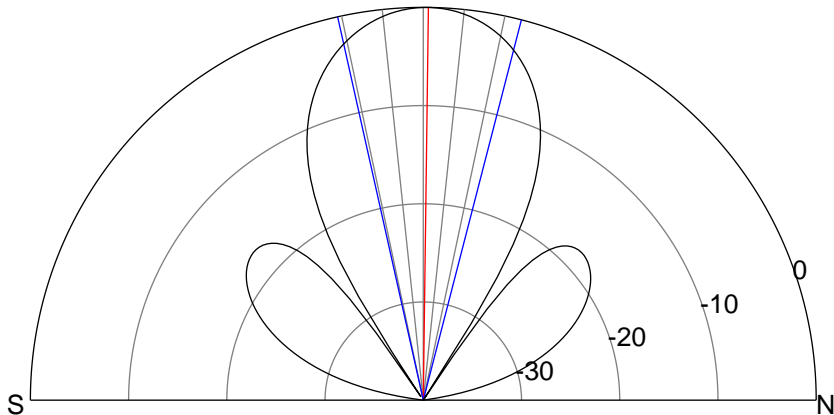
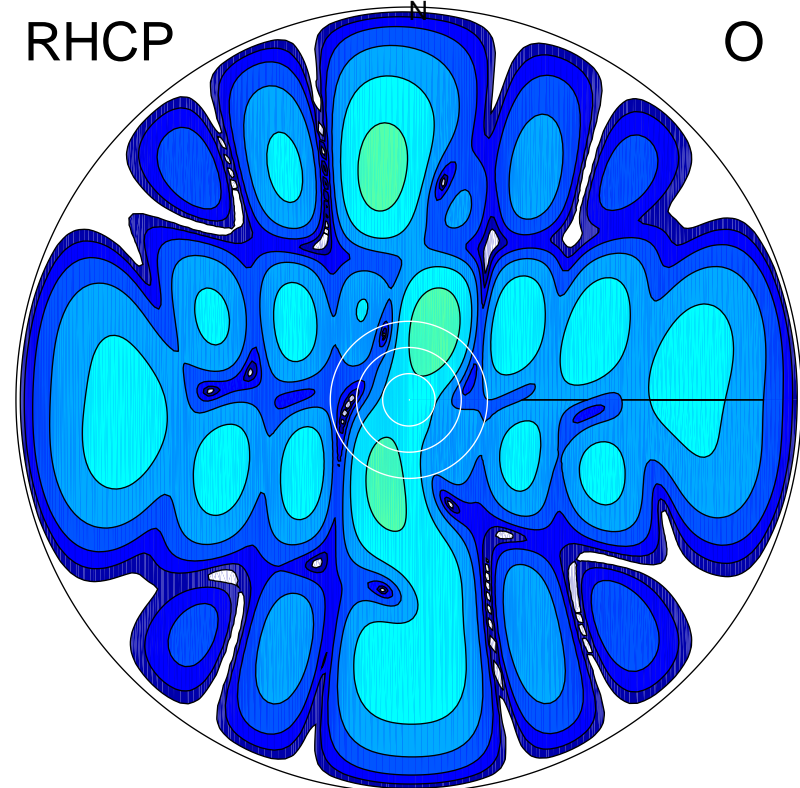
LHCP

X



RHCP

O



ERP 31.6 MW

Peak gain 19.7 dBi at Az 344 Zen 1
RHCP gain -12.0 dBi
N-S peak 19.7 dBi at Zen 0.7
N-S -3 dB beamwidth 27.1 deg.

ERP 0.1 MW

Peak gain -6.5 dBi at Az 21 Zen 17
LHCP gain 13.6 dBi
N-S peak -10.3 dBi at Zen 12.9
N-S -3 dB beamwidth 60.6 deg.