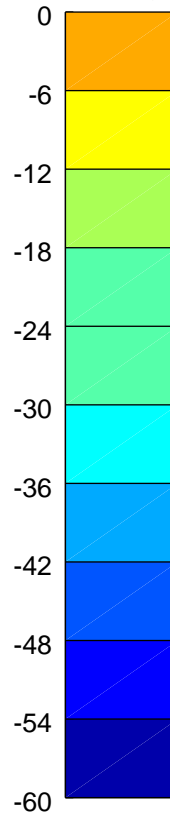
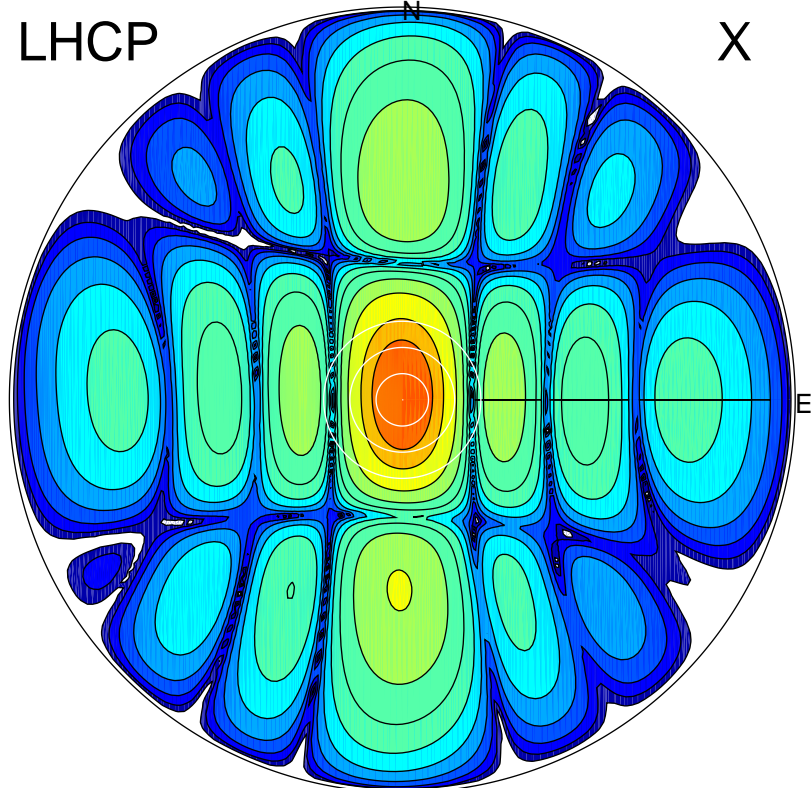


2017-11-24 11:42:00 A2 4.04000000 MHz 291.0 kW

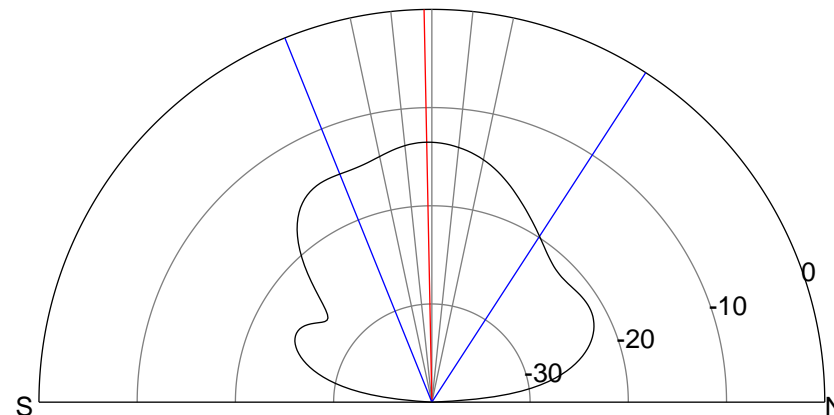
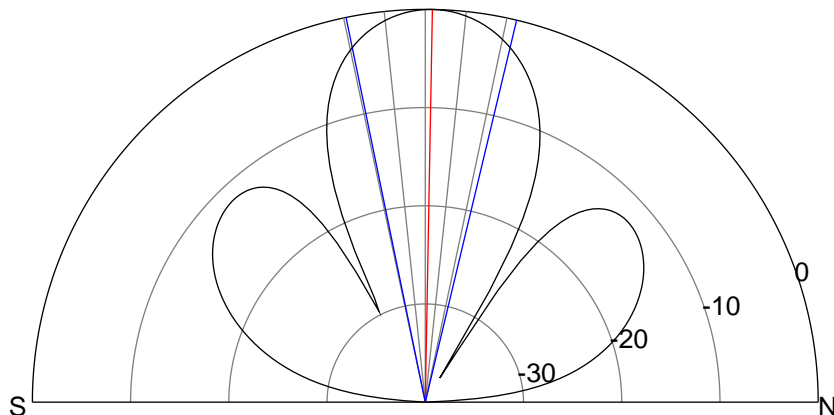
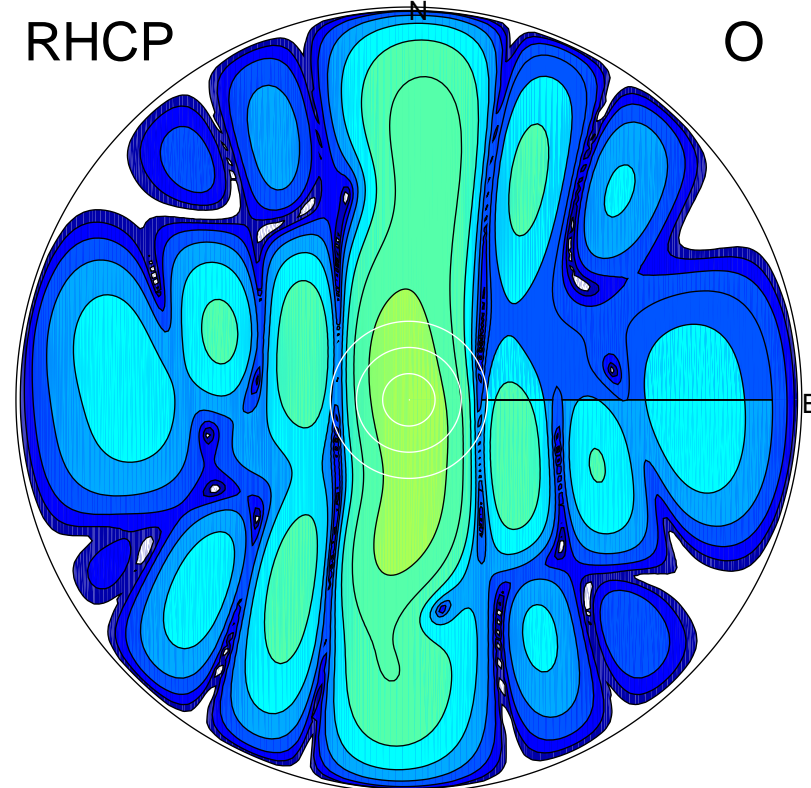
LHCP

X



RHCP

O



ERP 24.9 MW

Peak gain 19.3 dBi at Az 14 Zen 1

RHCP gain 5.8 dBi

N-S peak 19.3 dBi at Zen 1.0

N-S -3 dB beamwidth 25.1 deg.

ERP 1.1 MW

Peak gain 5.8 dBi at Az 187 Zen 1

LHCP gain 19.3 dBi

N-S peak 5.8 dBi at Zen -1.1

N-S -3 dB beamwidth 55.0 deg.